

Demographic and Income Profile

Sunset Place
3860 S Lindbergh Blvd, Saint Louis, Missouri, 63127
Ring: 1 mile radius



Summary	Census 2020	2025	2030
Total Population	5,407	5,354	5,328
Total Households	2,109	2,089	2,086
Family Households	1,533	1,494	1,483
Average Household Size	2.53	2.53	2.52
Owner Occupied Housing Units	1,877	1,881	1,889
Renter Occupied Housing Units	232	208	196
Median Age	44.0	44.0	44.9

Trends 2025 - 2030	Area	State	National
Population	-0.1%	0.2%	0.4%
Households	0.0%	0.4%	0.6%
Family Population	-0.1%	0.2%	0.5%
Owner Occupied Housing Units	0.1%	0.6%	0.0%
Median Household Income	2.4%	2.3%	2.5%

Population by Age	Census 2020		2025		2030	
	Number	Percent	Number	Percent	Number	Percent
0-4	309	5.7%	290	5.4%	283	5.3%
5-9	376	7.0%	355	6.6%	322	6.0%
10-14	357	6.6%	401	7.5%	378	7.1%
15-19	330	6.1%	320	6.0%	365	6.8%
20-24	210	3.9%	236	4.4%	229	4.3%
25-29	188	3.5%	224	4.2%	251	4.7%
30-34	285	5.3%	223	4.2%	262	4.9%
35-39	366	6.8%	314	5.9%	248	4.7%
40-44	350	6.5%	390	7.3%	332	6.2%
45-49	293	5.4%	363	6.8%	400	7.5%
50-54	286	5.3%	290	5.4%	356	6.7%
55-59	374	6.9%	277	5.2%	284	5.3%
60-64	420	7.8%	336	6.3%	260	4.9%
65-69	367	6.8%	392	7.3%	326	6.1%
70-74	281	5.2%	308	5.8%	335	6.3%
75-79	237	4.4%	231	4.3%	262	4.9%
80-84	168	3.1%	197	3.7%	199	3.7%
Age 85+	211	3.9%	207	3.9%	237	4.5%

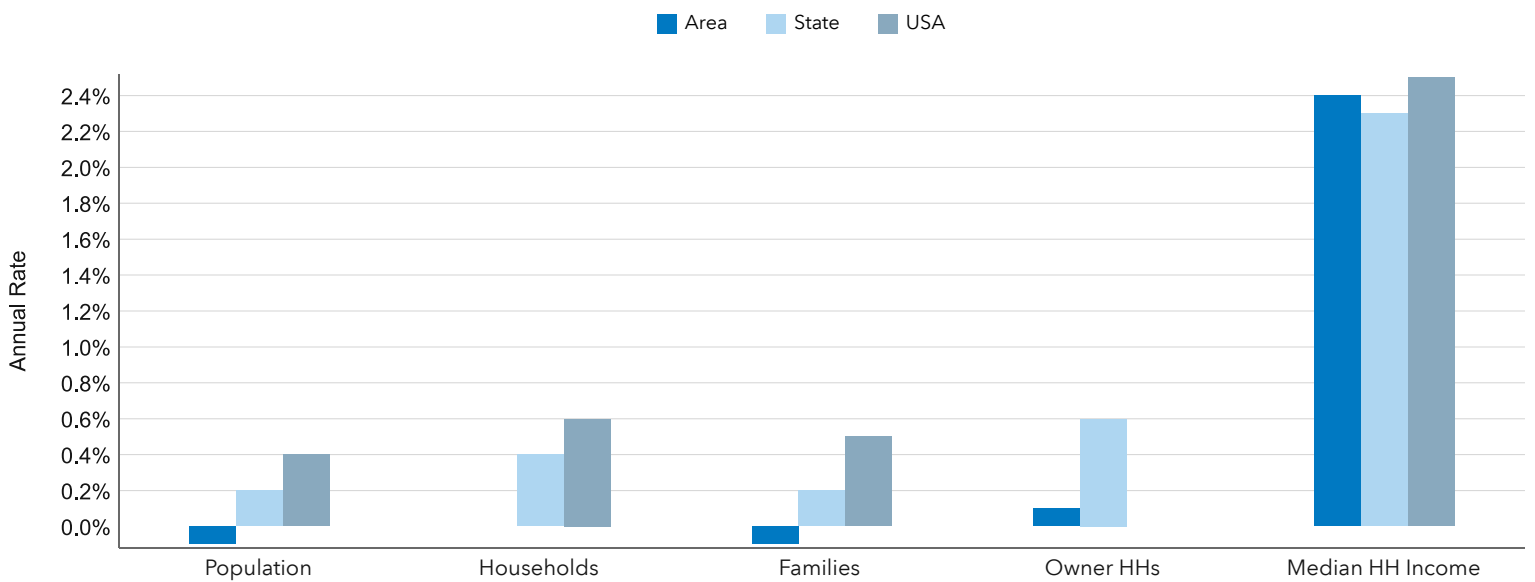
Households by Income	2025		2030	
	Number	Percent	Number	Percent
<\$10,000	34	1.6%	28	1.3%
\$10,000-14,999	7	0.3%	4	0.2%
\$15,000-19,999	15	0.7%	11	0.5%
\$20,000-24,999	25	1.2%	19	0.9%
\$25,000-29,999	52	2.5%	40	1.9%
\$30,000-34,999	39	1.9%	30	1.4%
\$35,000-39,999	49	2.4%	41	2.0%
\$40,000-44,999	52	2.5%	42	2.0%
\$45,000-49,999	49	2.4%	39	1.9%
\$50,000-59,999	77	3.7%	62	3.0%
\$60,000-74,999	169	8.1%	146	7.0%
\$75,000-99,999	219	10.5%	193	9.3%
\$100,000-124,999	270	12.9%	248	11.9%
\$125,000-149,999	230	11.0%	227	10.9%
\$150,000-199,999	326	15.6%	368	17.6%
\$200,000-249,999	148	7.1%	180	8.6%
\$250,000-299,999	69	3.3%	75	3.6%
\$300,000-399,999	125	6.0%	173	8.3%
\$400,000-499,999	19	0.9%	13	0.6%
\$500,000+	113	5.4%	148	7.1%
Median Household Income	\$123,450	-	\$139,284	-
Average Household Income	\$163,993	-	\$187,036	-
Per Capita Income	\$64,010	-	\$73,205	-

Race and Ethnicity	Census 2020		2025		2030	
	Number	Percent	Number	Percent	Number	Percent
White Alone	4,732	87.5%	4,640	86.7%	4,557	85.5%
Black Alone	162	3.0%	167	3.1%	177	3.3%
American Indian	7	0.1%	7	0.1%	7	0.1%
Asian Alone	134	2.5%	145	2.7%	160	3.0%
Pacific Islander	0	0.0%	0	0.0%	0	0.0%
Some Other Race	42	0.8%	45	0.8%	48	0.9%
Two or More Races	330	6.1%	350	6.5%	379	7.1%
Hispanic (Any Race)	157	2.9%	160	3.0%	172	3.2%

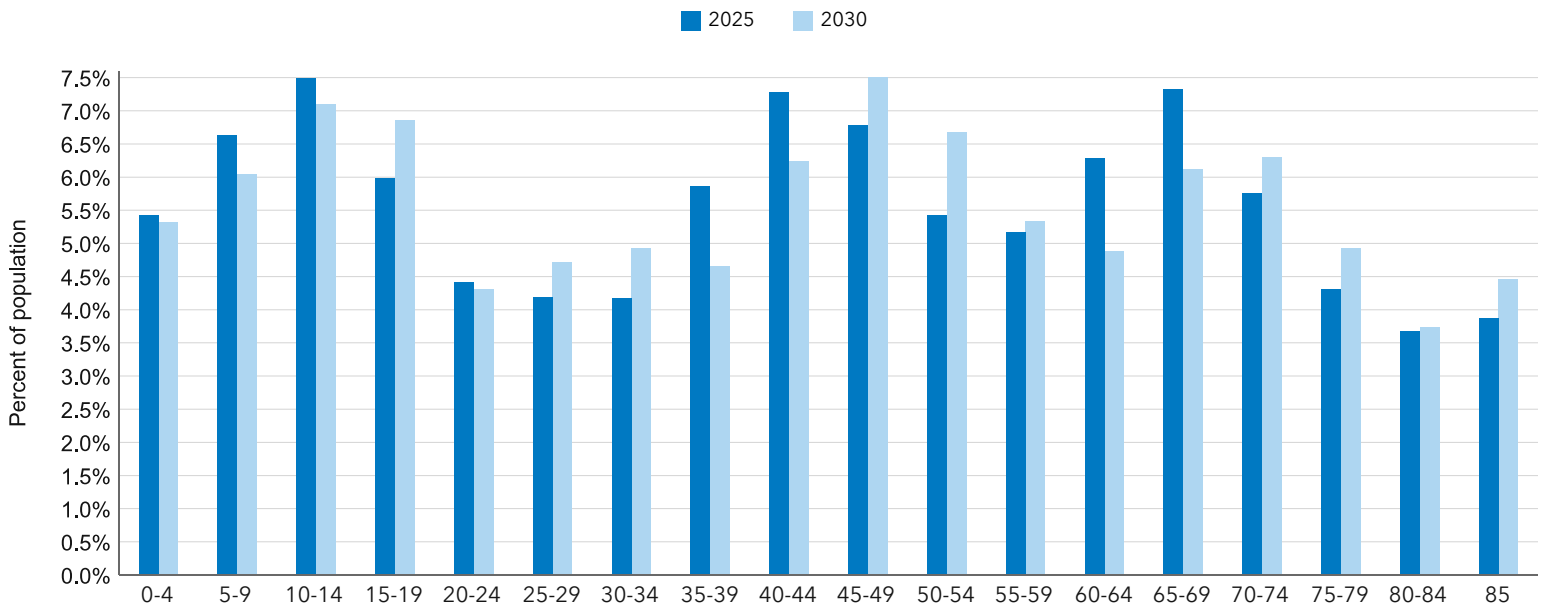
Key Indicators for 2025



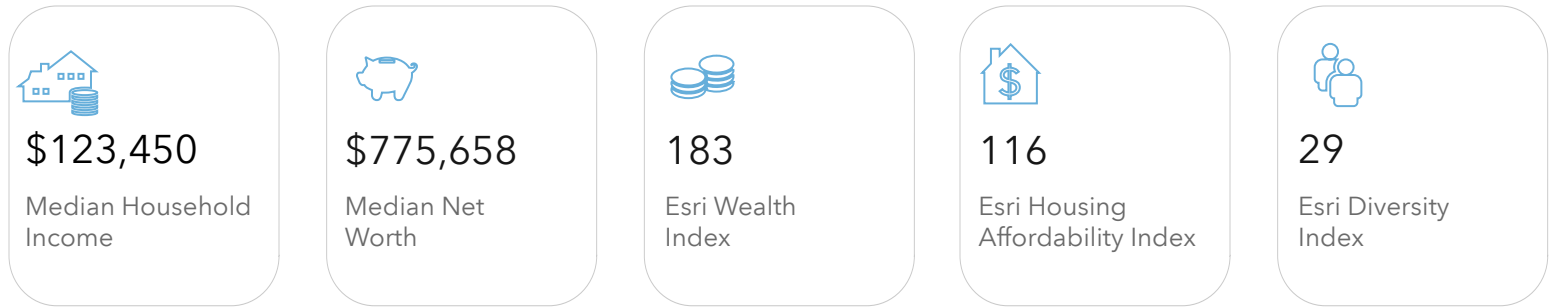
Trends: 2025 - 2030 Annual Rate



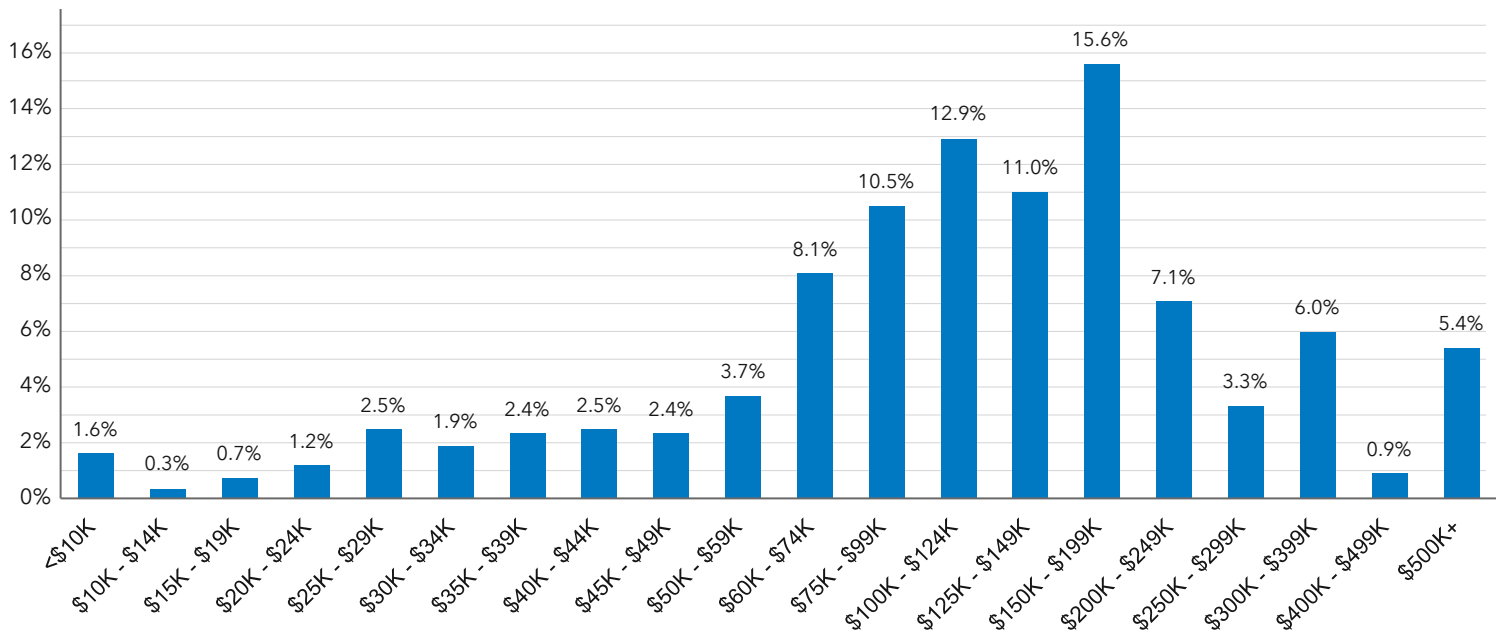
Population by Age



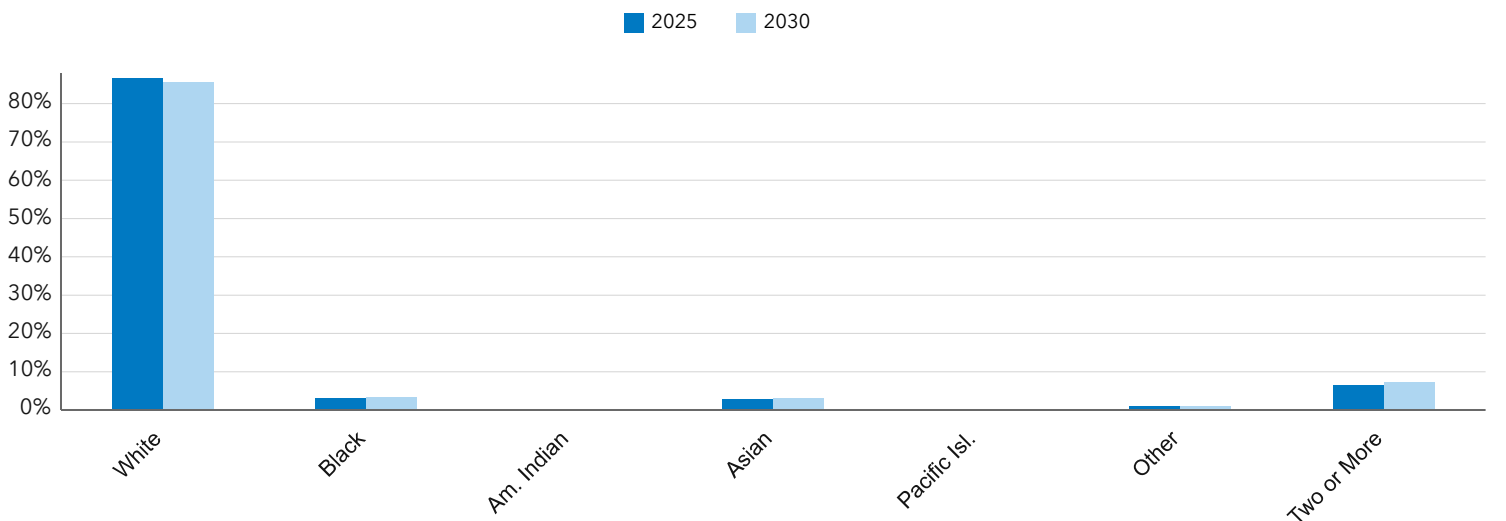
Key Indicators for 2025



Households by Income for 2025



Population by Race



Demographic and Income Profile

Sunset Place
3860 S Lindbergh Blvd, Saint Louis, Missouri, 63127
Ring: 3 mile radius



Summary	Census 2020	2025	2030
Total Population	62,452	61,911	62,284
Total Households	25,716	25,567	25,828
Family Households	16,744	16,308	16,317
Average Household Size	2.39	2.38	2.37
Owner Occupied Housing Units	20,319	20,528	20,690
Renter Occupied Housing Units	5,397	5,039	5,138
Median Age	44.1	44.4	45.7

Trends 2025 - 2030	Area	State	National
Population	0.1%	0.2%	0.4%
Households	0.2%	0.4%	0.6%
Family Population	0.0%	0.2%	0.5%
Owner Occupied Housing Units	0.2%	0.6%	0.0%
Median Household Income	3.2%	2.3%	2.5%

Population by Age	Census 2020		2025		2030	
	Number	Percent	Number	Percent	Number	Percent
0-4	3,495	5.6%	3,263	5.3%	3,178	5.1%
5-9	4,110	6.6%	3,893	6.3%	3,536	5.7%
10-14	4,036	6.5%	4,185	6.8%	4,028	6.5%
15-19	3,775	6.0%	3,680	5.9%	3,878	6.2%
20-24	2,562	4.1%	2,976	4.8%	2,961	4.8%
25-29	2,502	4.0%	2,601	4.2%	3,083	5.0%
30-34	3,361	5.4%	2,793	4.5%	2,887	4.6%
35-39	4,240	6.8%	3,627	5.9%	3,074	4.9%
40-44	3,837	6.1%	4,492	7.3%	3,853	6.2%
45-49	3,594	5.8%	3,827	6.2%	4,516	7.3%
50-54	3,591	5.8%	3,539	5.7%	3,756	6.0%
55-59	4,162	6.7%	3,458	5.6%	3,466	5.6%
60-64	4,604	7.4%	3,816	6.2%	3,324	5.3%
65-69	4,203	6.7%	4,256	6.9%	3,712	6.0%
70-74	3,343	5.3%	3,649	5.9%	3,812	6.1%
75-79	2,528	4.0%	2,946	4.8%	3,356	5.4%
80-84	1,838	2.9%	2,223	3.6%	2,684	4.3%
Age 85+	2,671	4.3%	2,687	4.3%	3,180	5.1%

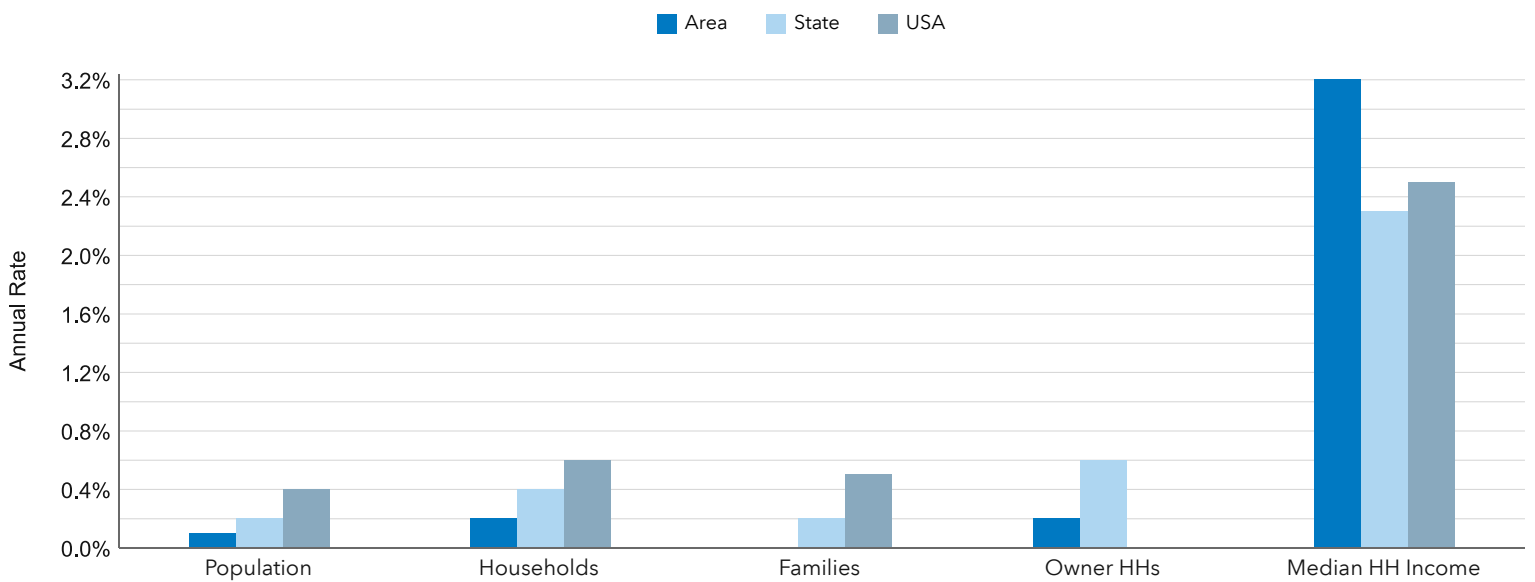
Households by Income	2025		2030	
	Number	Percent	Number	Percent
<\$10,000	514	2.0%	447	1.7%
\$10,000-14,999	387	1.5%	295	1.1%
\$15,000-19,999	420	1.6%	315	1.2%
\$20,000-24,999	583	2.3%	444	1.7%
\$25,000-29,999	524	2.0%	410	1.6%
\$30,000-34,999	502	2.0%	389	1.5%
\$35,000-39,999	637	2.5%	533	2.1%
\$40,000-44,999	587	2.3%	504	1.9%
\$45,000-49,999	627	2.5%	535	2.1%
\$50,000-59,999	1,250	4.9%	1,054	4.1%
\$60,000-74,999	2,407	9.4%	2,101	8.1%
\$75,000-99,999	2,763	10.8%	2,501	9.7%
\$100,000-124,999	2,582	10.1%	2,489	9.6%
\$125,000-149,999	2,380	9.3%	2,421	9.4%
\$150,000-199,999	2,987	11.7%	3,355	13.0%
\$200,000-249,999	2,069	8.1%	2,538	9.8%
\$250,000-299,999	953	3.7%	1,056	4.1%
\$300,000-399,999	1,788	7.0%	2,499	9.7%
\$400,000-499,999	263	1.0%	182	0.7%
\$500,000+	1,345	5.3%	1,760	6.8%
Median Household Income	\$114,053	-	\$133,199	-
Average Household Income	\$158,631	-	\$182,036	-
Per Capita Income	\$65,733	-	\$75,731	-

Race and Ethnicity	Census 2020		2025		2030	
	Number	Percent	Number	Percent	Number	Percent
White Alone	54,905	87.9%	53,889	87.0%	53,496	85.9%
Black Alone	2,085	3.3%	2,189	3.5%	2,372	3.8%
American Indian	96	0.1%	97	0.2%	100	0.2%
Asian Alone	1,359	2.2%	1,461	2.4%	1,626	2.6%
Pacific Islander	19	0.0%	19	0.0%	21	0.0%
Some Other Race	508	0.8%	542	0.9%	584	0.9%
Two or More Races	3,481	5.6%	3,715	6.0%	4,085	6.6%
Hispanic (Any Race)	1,769	2.8%	1,836	3.0%	2,003	3.2%

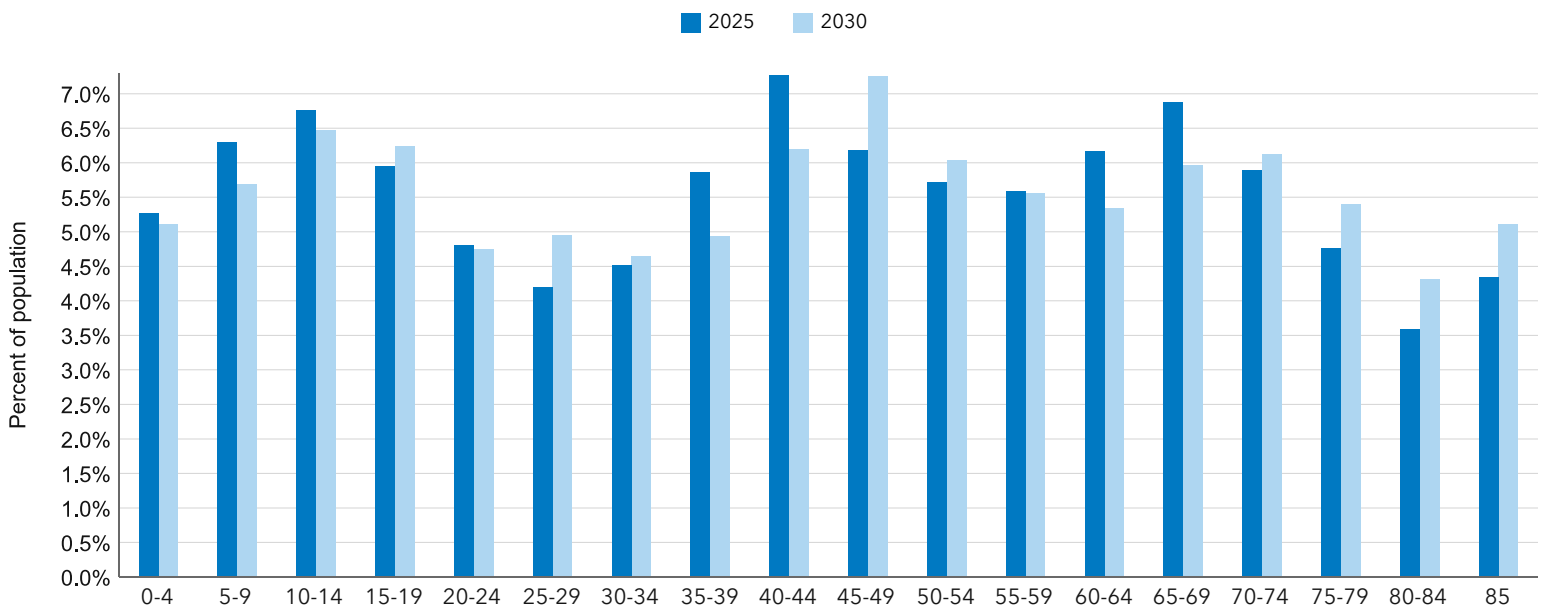
Key Indicators for 2025



Trends: 2025 - 2030 Annual Rate



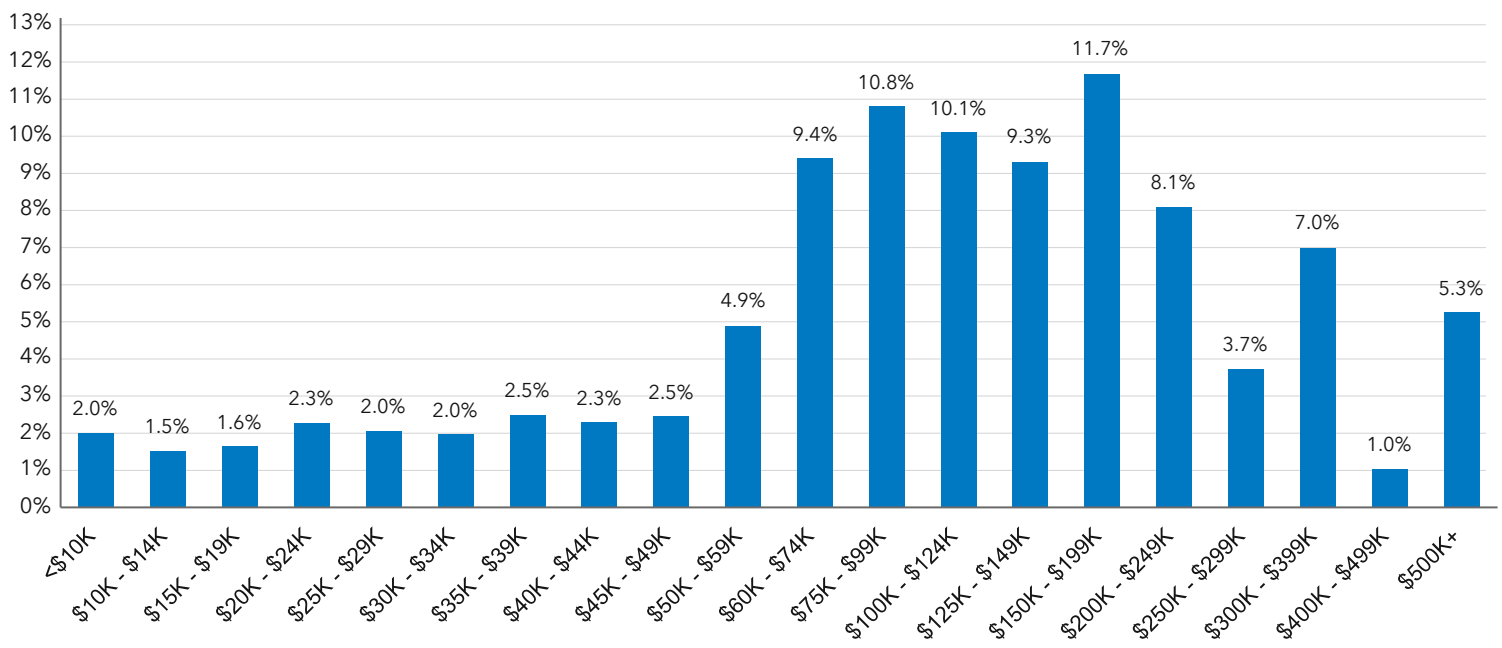
Population by Age



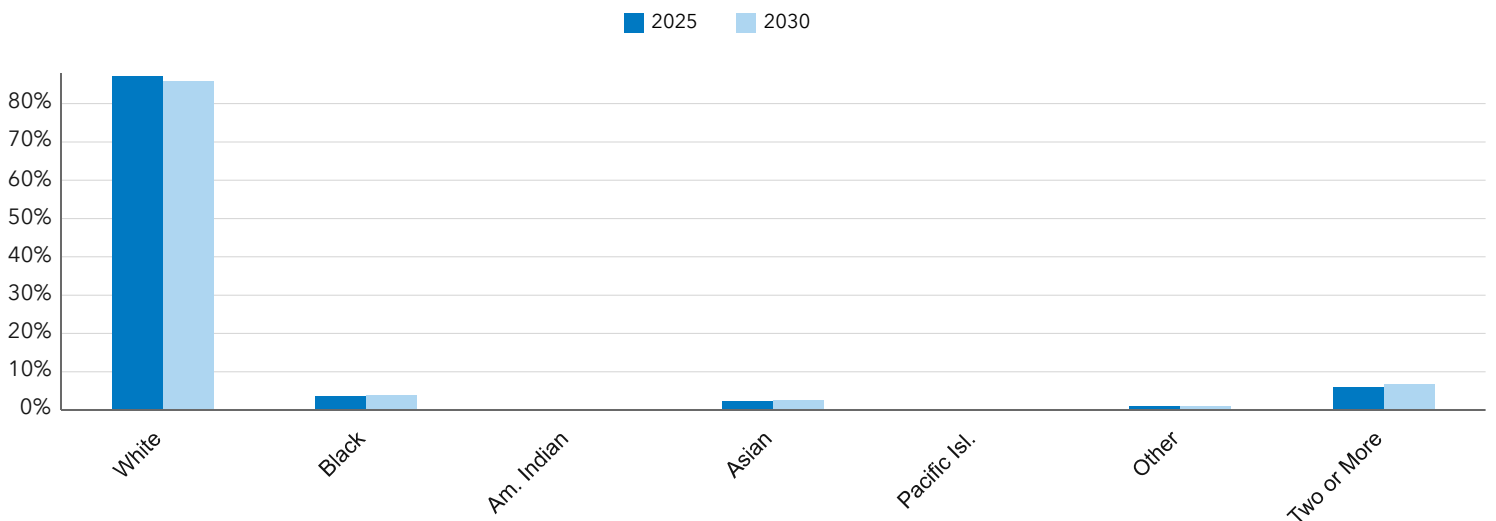
Key Indicators for 2025



Households by Income for 2025



Population by Race



Demographic and Income Profile



Sunset Place
3860 S Lindbergh Blvd, Saint Louis, Missouri, 63127
Ring: 5 mile radius

Summary	Census 2020	2025	2030
Total Population	197,503	195,756	195,660
Total Households	82,520	82,273	82,670
Family Households	52,602	51,324	51,108
Average Household Size	2.35	2.34	2.33
Owner Occupied Housing Units	62,453	63,437	64,104
Renter Occupied Housing Units	20,067	18,836	18,566
Median Age	43.2	43.6	44.9

Trends 2025 - 2030	Area	State	National
Population	0.0%	0.2%	0.4%
Households	0.1%	0.4%	0.6%
Family Population	-0.1%	0.2%	0.5%
Owner Occupied Housing Units	0.2%	0.6%	0.0%
Median Household Income	3.0%	2.3%	2.5%

Population by Age	Census 2020		2025		2030	
	Number	Percent	Number	Percent	Number	Percent
0-4	10,891	5.5%	10,258	5.2%	9,926	5.1%
5-9	11,982	6.1%	11,809	6.0%	10,747	5.5%
10-14	12,267	6.2%	12,153	6.2%	12,115	6.2%
15-19	11,817	6.0%	11,496	5.9%	11,528	5.9%
20-24	9,830	5.0%	10,134	5.2%	10,079	5.2%
25-29	9,740	4.9%	9,767	5.0%	10,239	5.2%
30-34	11,459	5.8%	10,357	5.3%	10,227	5.2%
35-39	13,296	6.7%	12,066	6.2%	10,953	5.6%
40-44	11,750	6.0%	13,539	6.9%	12,216	6.2%
45-49	11,125	5.6%	11,712	6.0%	13,550	6.9%
50-54	11,728	5.9%	11,133	5.7%	11,620	5.9%
55-59	13,502	6.8%	11,301	5.8%	10,864	5.5%
60-64	14,209	7.2%	12,483	6.4%	10,837	5.5%
65-69	13,073	6.6%	12,915	6.6%	11,810	6.0%
70-74	10,468	5.3%	11,448	5.8%	11,641	6.0%
75-79	7,593	3.8%	9,166	4.7%	10,375	5.3%
80-84	5,401	2.7%	6,587	3.4%	8,127	4.2%
Age 85+	7,372	3.7%	7,430	3.8%	8,806	4.5%

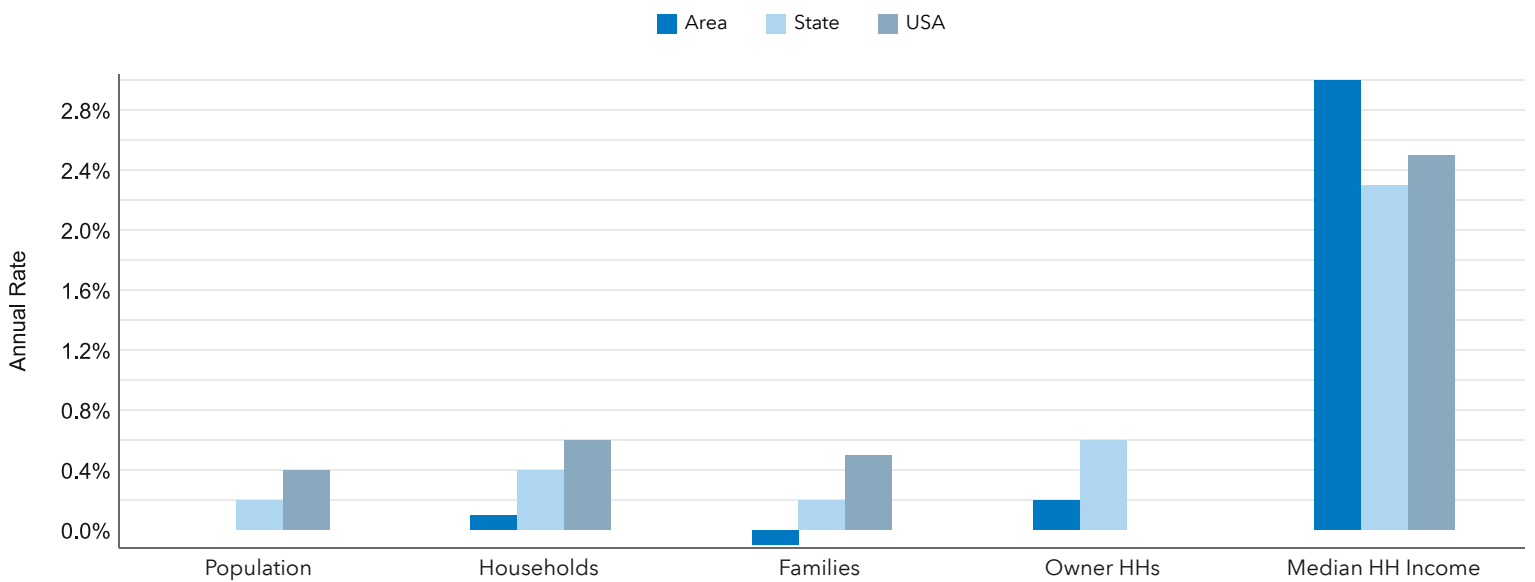
Households by Income	2025		2030	
	Number	Percent	Number	Percent
<\$10,000	1,989	2.4%	1,704	2.1%
\$10,000-14,999	1,199	1.5%	885	1.1%
\$15,000-19,999	1,425	1.7%	1,050	1.3%
\$20,000-24,999	1,639	2.0%	1,254	1.5%
\$25,000-29,999	1,824	2.2%	1,449	1.8%
\$30,000-34,999	1,735	2.1%	1,356	1.6%
\$35,000-39,999	2,325	2.8%	1,926	2.3%
\$40,000-44,999	2,426	3.0%	2,031	2.5%
\$45,000-49,999	2,380	2.9%	1,989	2.4%
\$50,000-59,999	4,591	5.6%	3,978	4.8%
\$60,000-74,999	7,602	9.2%	6,846	8.3%
\$75,000-99,999	9,898	12.0%	9,043	10.9%
\$100,000-124,999	8,757	10.6%	8,676	10.5%
\$125,000-149,999	6,910	8.4%	7,215	8.7%
\$150,000-199,999	9,270	11.3%	10,445	12.6%
\$200,000-249,999	5,866	7.1%	7,200	8.7%
\$250,000-299,999	2,923	3.5%	3,255	3.9%
\$300,000-399,999	4,714	5.7%	6,642	8.0%
\$400,000-499,999	852	1.0%	577	0.7%
\$500,000+	3,950	4.8%	5,150	6.2%
Median Household Income	\$105,043	-	\$122,045	-
Average Household Income	\$149,930	-	\$171,649	-
Per Capita Income	\$63,167	-	\$72,706	-

Race and Ethnicity	Census 2020		2025		2030	
	Number	Percent	Number	Percent	Number	Percent
White Alone	172,399	87.3%	168,938	86.3%	166,420	85.1%
Black Alone	6,340	3.2%	6,737	3.4%	7,318	3.7%
American Indian	357	0.2%	356	0.2%	362	0.2%
Asian Alone	5,337	2.7%	5,746	2.9%	6,352	3.3%
Pacific Islander	47	0.0%	48	0.0%	52	0.0%
Some Other Race	1,771	0.9%	1,907	1.0%	2,051	1.1%
Two or More Races	11,253	5.7%	12,024	6.1%	13,105	6.7%
Hispanic (Any Race)	6,016	3.0%	6,285	3.2%	6,796	3.5%

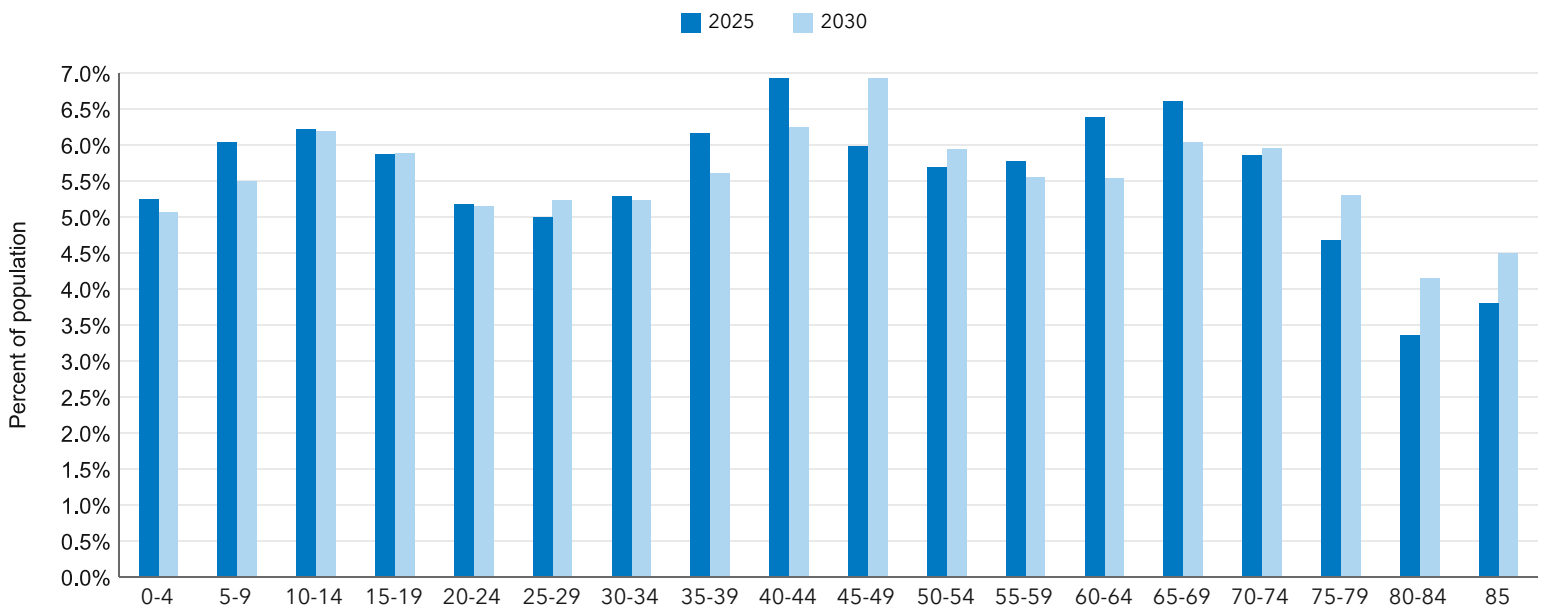
Key Indicators for 2025



Trends: 2025 - 2030 Annual Rate



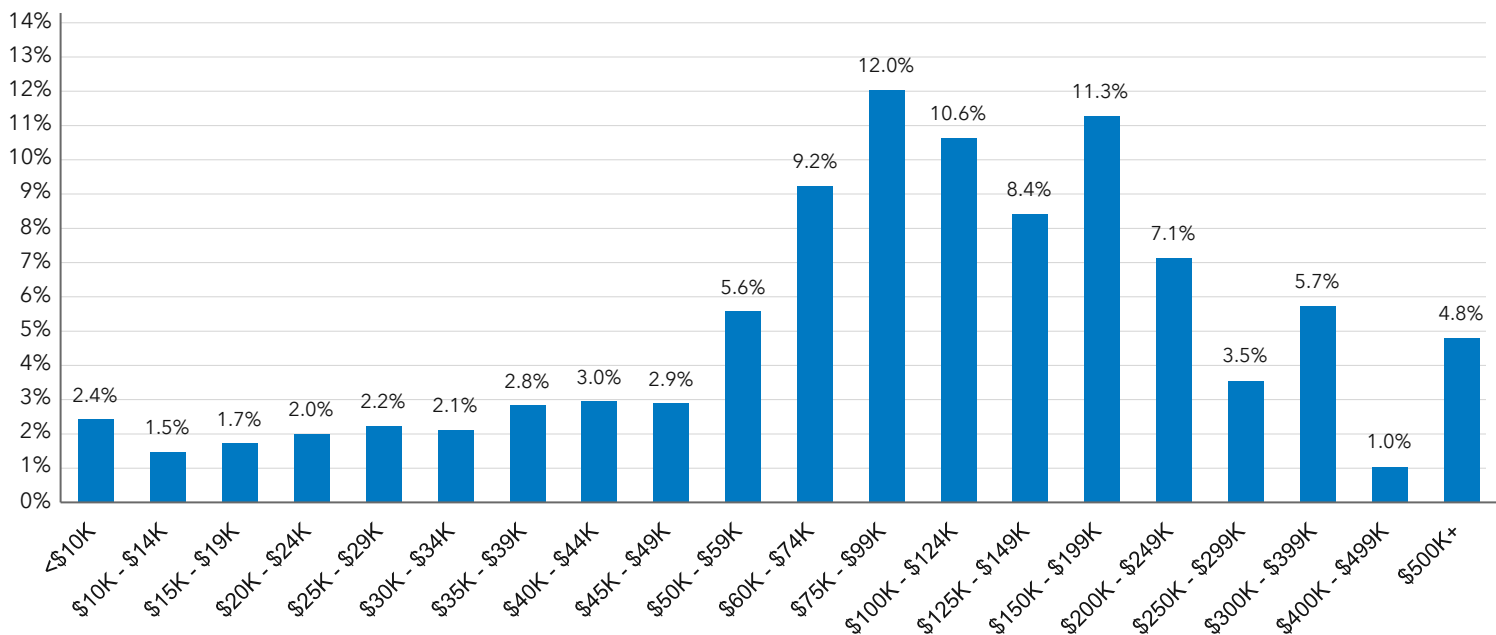
Population by Age



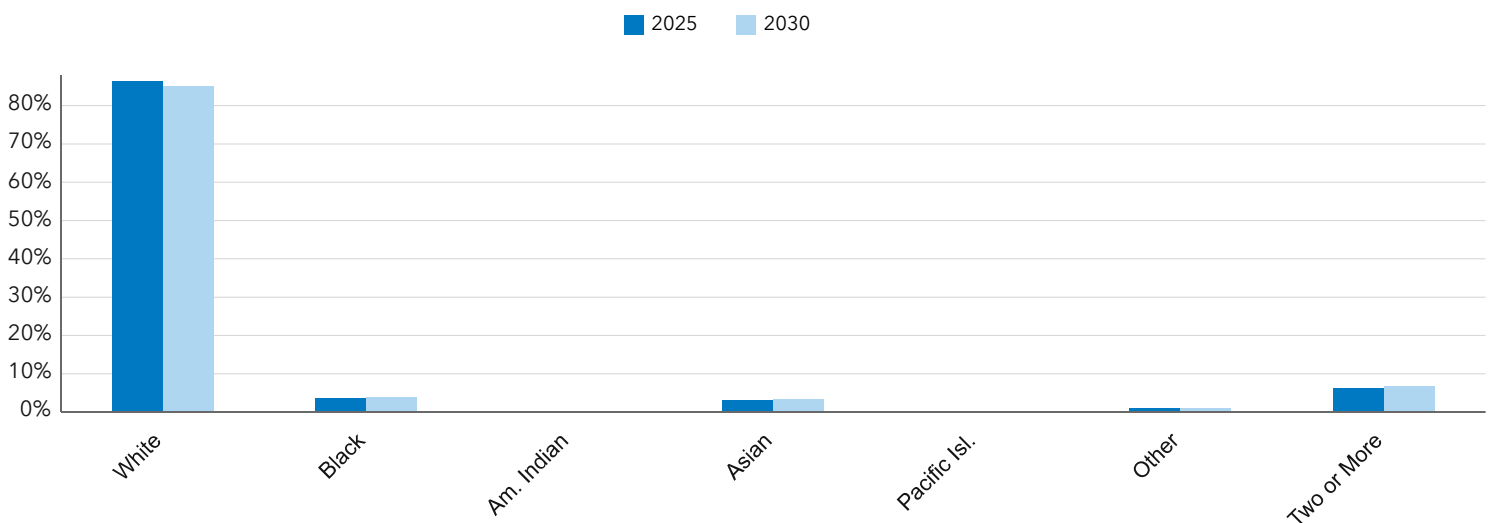
Key Indicators for 2025



Households by Income for 2025



Population by Race



Business Summary Report (NAICS)

Sunset Place
3860 S Lindbergh Blvd, Saint Louis, Missouri, 63127
Rings: 1, 3, 5 mile radii



Data for all businesses in area	1 mile	3 miles	5 miles
Total Businesses	544	3,471	8,820
Total Employees	7,690	58,545	139,794
Total Population	5,354	61,911	195,756
Employee/Population Ratio (per 100)	143.6	94.6	71.4

by NAICS Codes	Businesses		Employees		Businesses		Employees		Businesses		Employees	
	Number	%	Number	%	Number	%	Number	%	Number	%	Number	%
Agriculture, Forestry, Fishing & Hunting (11)	2	0.4%	73	0.9%	5	0.1%	96	0.2%	13	0.1%	161	0.1%
Mining (21)	0	0.0%	0	0.0%	4	0.1%	31	0.1%	6	0.1%	76	0.1%
Utilities (22)	0	0.0%	0	0.0%	7	0.2%	270	0.5%	10	0.1%	297	0.2%
Construction (23)	26	4.8%	225	2.9%	292	8.4%	3,565	6.1%	654	7.4%	6,342	4.5%
Building Construction	11	2.0%	70	0.9%	108	3.1%	990	1.7%	230	2.6%	1,917	1.4%
Heavy/Civil Eng Construction	4	0.7%	27	0.3%	16	0.5%	182	0.3%	39	0.4%	373	0.3%
Specialty Trade Contractor	12	2.2%	127	1.6%	168	4.8%	2,393	4.1%	385	4.4%	4,053	2.9%
Manufacturing (31-33)	8	1.5%	105	1.4%	157	4.5%	3,856	6.6%	382	4.3%	9,723	7.0%
Wholesale Trade (42)	6	1.1%	48	0.6%	146	4.2%	1,794	3.1%	323	3.7%	3,894	2.8%
Durable Goods	4	0.7%	33	0.4%	118	3.4%	1,532	2.6%	260	3.0%	2,962	2.1%
Nondurable Goods	1	0.2%	3	0.0%	21	0.6%	204	0.3%	50	0.6%	823	0.6%
Trade Broker	1	0.2%	12	0.2%	7	0.2%	58	0.1%	13	0.1%	109	0.1%



Source: This infographic contains data provided by Esri-Data Axle (2025), Esri (2025). Data note: Not all NAICS subcategories for a 2 digit major category are being shown.

Business Summary Report (NAICS)

Sunset Place
3860 S Lindbergh Blvd, Saint Louis, Missouri, 63127
Rings: 1, 3, 5 mile radii



by NAICS Codes	1 mile				3 miles				5 miles			
	Businesses		Employees		Businesses		Employees		Businesses		Employees	
	Number	%	Number	%	Number	%	Number	%	Number	%	Number	%
Retail Trade (44-45)	49	9.0%	830	10.8%	353	10.2%	5,201	8.9%	1,122	12.7%	17,371	12.4%
Motor Vehicle & Parts Dealers	8	1.5%	119	1.6%	36	1.0%	766	1.3%	111	1.3%	2,787	2.0%
Furniture & Home Furnishing Stores	2	0.4%	9	0.1%	21	0.6%	162	0.3%	70	0.8%	537	0.4%
Electronics & Appliance Stores	2	0.4%	44	0.6%	15	0.4%	123	0.2%	46	0.5%	433	0.3%
Building & Garden Equipment	6	1.1%	294	3.8%	44	1.3%	930	1.6%	100	1.1%	1,525	1.1%
Food & Beverage Stores	3	0.6%	40	0.5%	31	0.9%	629	1.1%	109	1.2%	2,895	2.1%
Health & Personal Care Stores	2	0.4%	12	0.2%	51	1.5%	374	0.6%	154	1.8%	1,337	1.0%
Gasoline Stations	1	0.2%	9	0.1%	11	0.3%	59	0.1%	34	0.4%	351	0.3%
Clothing, Shoe and Jewellery Stores	3	0.6%	42	0.6%	32	0.9%	256	0.4%	178	2.0%	1,799	1.3%
Sporting Goods, Hobby & Music Stores	15	2.8%	147	1.9%	83	2.4%	776	1.3%	221	2.5%	1,846	1.3%
General Merchandise Stores	6	1.1%	114	1.5%	29	0.8%	1,128	1.9%	100	1.1%	3,862	2.8%
Transportation & Warehousing (48-49)	3	0.6%	31	0.4%	75	2.2%	7,879	13.5%	134	1.5%	8,947	6.4%
Truck Transportation	2	0.4%	29	0.4%	51	1.5%	7,405	12.7%	78	0.9%	7,877	5.6%
Information (51)	9	1.6%	843	11.0%	68	2.0%	1,827	3.1%	162	1.8%	3,106	2.2%
Finance & Insurance (52)	69	12.7%	424	5.5%	272	7.8%	1,655	2.8%	660	7.5%	5,165	3.7%
Central Bank/Credit & Related Activities	14	2.6%	122	1.6%	69	2.0%	584	1.0%	195	2.2%	1,767	1.3%
Securities & Commodity Contracts	32	5.9%	125	1.6%	102	2.9%	347	0.6%	232	2.6%	1,635	1.2%
Funds, Trusts & Other Financial	23	4.2%	177	2.3%	101	2.9%	724	1.2%	233	2.6%	1,763	1.3%
Real Estate, Rental & Leasing (53)	26	4.8%	227	3.0%	147	4.2%	1,111	1.9%	423	4.8%	3,442	2.5%
Professional, Scientific & Tech Services (54)	78	14.3%	677	8.8%	388	11.2%	3,289	5.6%	934	10.6%	10,863	7.8%
Legal Services	29	5.3%	160	2.1%	89	2.6%	403	0.7%	211	2.4%	1,089	0.8%



Source: This infographic contains data provided by Esri-Data Axle (2025), Esri (2025). Data note: Not all NAICS subcategories for a 2 digit major category are being shown.

Business Summary Report (NAICS)

Sunset Place
3860 S Lindbergh Blvd, Saint Louis, Missouri, 63127
Rings: 1, 3, 5 mile radii



by NAICS Codes	1 mile				3 miles				5 miles			
	Businesses		Employees		Businesses		Employees		Businesses		Employees	
	Number	%	Number	%	Number	%	Number	%	Number	%	Number	%
Management of Companies (55)	2	0.4%	14	0.2%	5	0.1%	31	0.1%	11	0.1%	58	0.0%
Administrative, Support & Waste Mgmt (56)	18	3.3%	264	3.4%	138	4.0%	1,529	2.6%	334	3.8%	3,806	2.7%
Educational Services (61)	8	1.5%	343	4.5%	80	2.3%	3,958	6.8%	198	2.2%	8,547	6.1%
Health Care & Social Assistance (62)	118	21.7%	1,208	15.7%	521	15.0%	11,649	19.9%	1,322	15.0%	31,196	22.3%
Ambulatory Health Care	103	18.9%	992	12.9%	409	11.8%	6,718	11.5%	1,029	11.7%	16,958	12.1%
Hospital	3	0.6%	21	0.3%	21	0.6%	2,739	4.7%	66	0.8%	6,532	4.7%
Nursing/Residential Care	5	0.9%	123	1.6%	28	0.8%	1,335	2.3%	71	0.8%	4,210	3.0%
Social Assistance	7	1.3%	73	0.9%	63	1.8%	856	1.5%	156	1.8%	3,496	2.5%
Arts, Entertainment & Recreation (71)	10	1.8%	156	2.0%	73	2.1%	831	1.4%	195	2.2%	2,873	2.1%
Accommodation & Food Services (72)	42	7.7%	1,584	20.6%	205	5.9%	4,918	8.4%	582	6.6%	11,830	8.5%
Accommodation	2	0.4%	114	1.5%	11	0.3%	243	0.4%	31	0.3%	545	0.4%
Food & Drinking Places	40	7.3%	1,470	19.1%	194	5.6%	4,675	8.0%	551	6.3%	11,285	8.1%
Other Services Except Public Admin (81)	53	9.7%	376	4.9%	389	11.2%	3,701	6.3%	1,020	11.6%	9,010	6.5%
Repair & Maintenance	7	1.3%	40	0.5%	70	2.0%	739	1.3%	211	2.4%	1,570	1.1%
Auto Repair & Maintenance	6	1.1%	35	0.5%	49	1.4%	328	0.6%	151	1.7%	976	0.7%
Personal & Laundry Service	23	4.2%	129	1.7%	108	3.1%	919	1.6%	323	3.7%	2,399	1.7%
Civic and Other Orgs	23	4.2%	208	2.7%	211	6.1%	2,043	3.5%	486	5.5%	5,041	3.6%
Public Administration (92)	10	1.8%	262	3.4%	60	1.7%	1,345	2.3%	133	1.5%	3,069	2.2%
Unclassified Establishments (99)	9	1.6%	0	0.0%	87	2.5%	8	0.0%	201	2.3%	20	0.0%
Total (11-99)	544	100.0%	7,690	100.0%	3,471	100.0%	58,545	100.0%	8,820	100.0%	139,794	100.0%



Source: This infographic contains data provided by Esri-Data Axle (2025), Esri (2025). Data note: Not all NAICS subcategories for a 2 digit major category are being shown.

Business Summary Report (SIC)

Sunset Place
3860 S Lindbergh Blvd, Saint Louis, Missouri, 63127
Rings: 1, 3, 5 mile radii



Data for all businesses in area	1 mile	3 miles	5 miles
Total Businesses	544	3,471	8,820
Total Employees	7,690	58,545	139,794
Total Population	5,354	61,911	195,756
Employee/Population Ratio (per 100)	143.6	94.6	71.4

by SIC Codes	Businesses		Employees		Businesses		Employees		Businesses		Employees	
	Number	%	Number	%	Number	%	Number	%	Number	%	Number	%
Agriculture & Mining (01-14)	10	1.8%	113	1.5%	68	2.0%	671	1.1%	165	1.9%	1,360	1.0%
Construction (15-17)	23	4.2%	197	2.6%	274	7.9%	3,380	5.8%	614	7.0%	6,023	4.3%
Manufacturing (20-39)	6	1.1%	99	1.3%	146	4.2%	3,761	6.4%	349	4.0%	8,759	6.3%
Transportation (40-47)	5	0.9%	37	0.5%	95	2.7%	8,117	13.9%	184	2.1%	9,292	6.7%
Communication (48)	2	0.4%	25	0.3%	24	0.7%	247	0.4%	57	0.7%	536	0.4%
Utility (49)	0	0.0%	0	0.0%	13	0.4%	356	0.6%	21	0.2%	412	0.3%
Wholesale Trade (50-51)	6	1.1%	48	0.6%	146	4.2%	1,794	3.1%	326	3.7%	3,908	2.8%
Retail Trade Summary (52-59)	91	16.7%	2,306	30.0%	563	16.2%	10,103	17.3%	1,717	19.5%	29,667	21.2%
Home Improvement	6	1.1%	294	3.8%	44	1.3%	930	1.6%	102	1.2%	1,527	1.1%
General Merchandise Stores	4	0.7%	103	1.3%	17	0.5%	1,057	1.8%	56	0.6%	3,429	2.5%
Food Stores	3	0.6%	39	0.5%	40	1.1%	843	1.4%	148	1.7%	3,903	2.8%
Auto Dealers & Gas Stations	9	1.6%	128	1.7%	47	1.4%	825	1.4%	142	1.6%	3,117	2.2%
Apparel & Accessory Stores	3	0.6%	42	0.6%	25	0.7%	232	0.4%	152	1.7%	1,666	1.2%
Furniture & Home Furnishings	5	0.9%	55	0.7%	45	1.3%	359	0.6%	141	1.6%	1,208	0.9%
Eating & Drinking Places	40	7.3%	1,470	19.1%	191	5.5%	4,615	7.9%	533	6.0%	11,045	7.9%
Miscellaneous Retail	21	3.9%	175	2.3%	153	4.4%	1,242	2.1%	444	5.0%	3,773	2.7%

Source: This infographic contains data provided by Esri-Data Axle (2025), Esri (2025).

Business Summary Report (SIC)

Sunset Place
3860 S Lindbergh Blvd, Saint Louis, Missouri, 63127
Rings: 1, 3, 5 mile radii



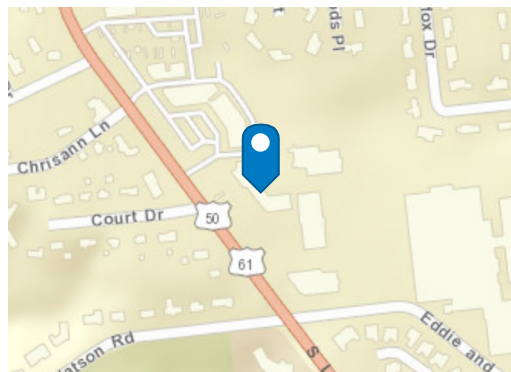
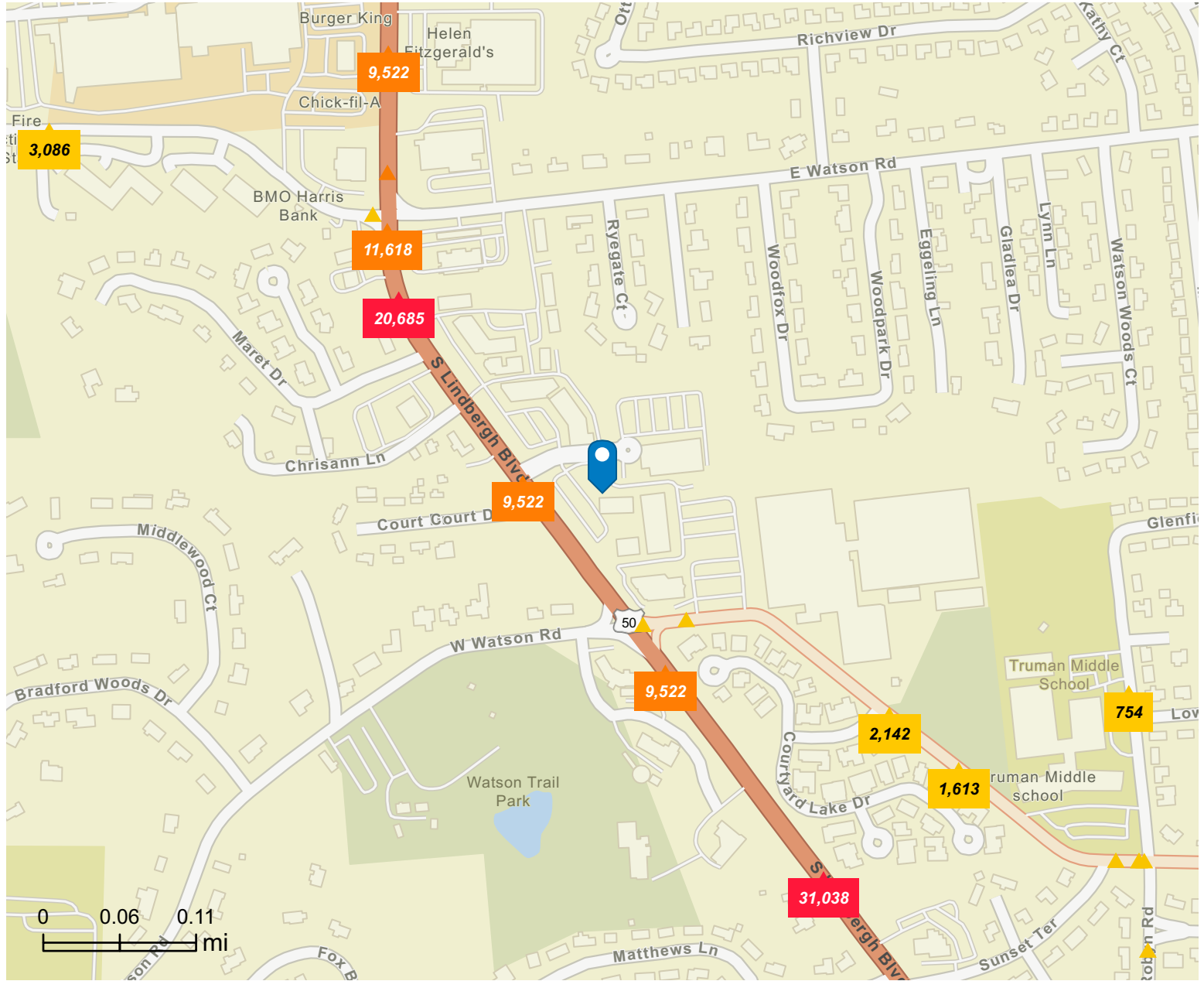
by SIC Codes	1 mile				3 miles				5 miles			
	Businesses		Employees		Businesses		Employees		Businesses		Employees	
	Number	%	Number	%	Number	%	Number	%	Number	%	Number	%
Finance, Insurance, Real Estate (60-67)	94	17.3%	642	8.3%	415	12.0%	2,763	4.7%	1,048	11.9%	8,390	6.0%
Banks, Savings & Lending	14	2.6%	122	1.6%	70	2.0%	587	1.0%	196	2.2%	1,770	1.3%
Securities Brokers	32	5.9%	125	1.6%	99	2.9%	339	0.6%	225	2.5%	1,598	1.1%
Insurance Carriers & Agents	23	4.2%	177	2.3%	101	2.9%	724	1.2%	233	2.6%	1,763	1.3%
Real Estate, Investment Offices	26	4.8%	218	2.8%	145	4.2%	1,112	1.9%	394	4.5%	3,259	2.3%
Services Summary (70-89)	288	52.9%	3,961	51.5%	1,582	45.6%	26,017	44.4%	4,006	45.4%	68,374	48.9%
Hotels & Lodging	2	0.4%	114	1.5%	11	0.3%	243	0.4%	31	0.3%	545	0.4%
Automotive Services	8	1.5%	61	0.8%	61	1.8%	412	0.7%	187	2.1%	1,148	0.8%
Movies & Amusements	12	2.2%	934	12.2%	89	2.6%	1,951	3.3%	226	2.6%	4,063	2.9%
Health Services	111	20.4%	1,136	14.8%	448	12.9%	10,668	18.2%	1,136	12.9%	26,905	19.3%
Legal Services	28	5.2%	157	2.0%	76	2.2%	352	0.6%	187	2.1%	956	0.7%
Education Inst. & Libraries	5	0.9%	293	3.8%	65	1.9%	3,775	6.5%	167	1.9%	8,362	6.0%
Other Services	120	22.1%	1,268	16.5%	832	24.0%	8,615	14.7%	2,072	23.5%	26,396	18.9%
Government (91-97)	10	1.8%	261	3.4%	58	1.7%	1,329	2.3%	131	1.5%	3,053	2.2%
Unclassified Establishments (99)	9	1.6%	0	0.0%	87	2.5%	8	0.0%	201	2.3%	20	0.0%
Totals (01-99)	544	100.0%	7,690	100.0%	3,471	100.0%	58,545	100.0%	8,820	100.0%	139,794	100.0%



Source: This infographic contains data provided by Esri-Data Axle (2025), Esri (2025).

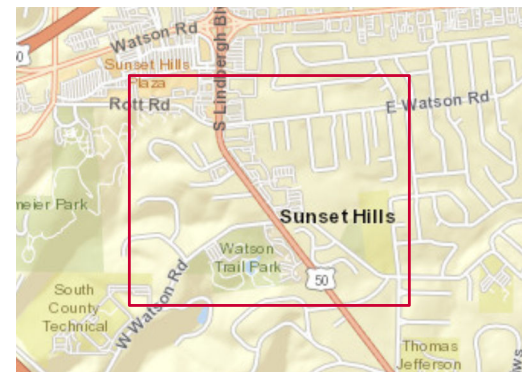
Traffic Count Map - Close Up

Sunset Place
 3860 S Lindbergh Blvd, Saint Louis, Missouri, 63127
 Rings: 1, 3, 5 mile radii



Average Daily Traffic Volume

- ▲ Up to 8,000 vehicles per day
- ▲ 8,001 - 15,000
- ▲ 15,001 - 50,000
- ▲ 50,001 - 70,000
- ▲ 70,001 - 100,000
- ▲ More than 100,000 per day



Traffic Count Profile

Sunset Place
3860 S Lindbergh Blvd, Saint Louis, Missouri, 63127
Rings: 1, 3, 5 mile radii

Prepared by Esri
Latitude: 38.54823
Longitude: -90.40420

Distance:	Street:	Closest Cross-street:	Year of Count:	Count:
0.11	Eddie Park Rd	Ctyard Cir Dr (0.01 miles E)	2013	3564
0.20	S Lindbergh Blvd	Maret Dr (0.04 miles SE)	2012	20685
0.26	Eddie & Park Road	Ctyard Lake (0.0 miles NW)	2018	2142
0.32	S Lindbergh Blvd	Ronnie Ln (0.09 miles SE)	2000	31038
0.47	Rott Road	Private Rd (0.04 miles W)	2022	3086
0.49		S Lindbergh Blvd (0.04 miles NW)	2022	2744
0.50		S Lindbergh Blvd (0.04 miles W)	2022	741
0.51	Watson Rd	Private Rd (0.05 miles E)	2013	1930
0.51		Sunset Hills Plz (0.03 miles W)	2022	3473
0.51	MO 366	S Kirkwood Rd (0.05 miles W)	2022	9044
0.52	Watson Rd	S Kirkwood Rd (0.04 miles W)	2018	5776
0.52	Watson Rd	Private Rd (0.07 miles W)	2012	21287
0.52		S Lindbergh Blvd (0.04 miles NE)	2022	1750
0.52		Private Rd (0.05 miles E)	2022	3209
0.52	Watson Rd	S Kirkwood Rd (0.03 miles W)	2019	11572
0.52	Watson Road	S Lindbergh Blvd (0.07 miles E)	2022	9057
0.53	S Lindbergh Blvd	Fox Ct (0.08 miles NW)	2019	27309
0.53	MO 366	S Lindbergh Blvd (0.05 miles E)	2022	11372
0.55	Watson Road	S Lindbergh Blvd (0.04 miles W)	2022	8212
0.55		Sunset Hills Plz (0.03 miles SW)	2022	1505
0.55		Deane Ct (0.05 miles N)	2022	5619
0.63	Watson Road	Sunset Office Dr (0.09 miles E)	2022	11975
0.64	South Kirkwood Road	Monica Dr (0.02 miles S)	2022	15295
0.65	Monica Drive	Lynstone Pl (0.09 miles E)	2022	978
0.68	South Kirkwood Road	Deane Ct (0.02 miles S)	2022	14373
0.69	Watson Rd	Starling Dr (0.03 miles W)	2019	22620
0.69	Watson Road	Summa Dr (0.03 miles E)	2022	9054
0.73	South Geyer Road	Watson Rd (0.04 miles N)	2022	2412
0.75		I- 44 (0.03 miles N)	2022	7601
0.75		S Kirkwood Rd (0.09 miles NE)	2022	8854

Data Note:The Traffic Profile displays up to 30 of the closest available traffic counts within the largest radius around your site. The years of the counts in the database range from 2025 to 2000. Esri removes counts that are older than 2000 from the Kalibrate provided database. Traffic counts are identified by the street on which they were recorded, along with the distance and direction to the closest cross-street. Distances displayed as 0.00 miles (due to rounding), are closest to the site. A traffic count is defined as the two-way Average Daily Traffic (ADT) that passes that location.

Source: ©2025 Kalibrate Technologies (Q3 2025).