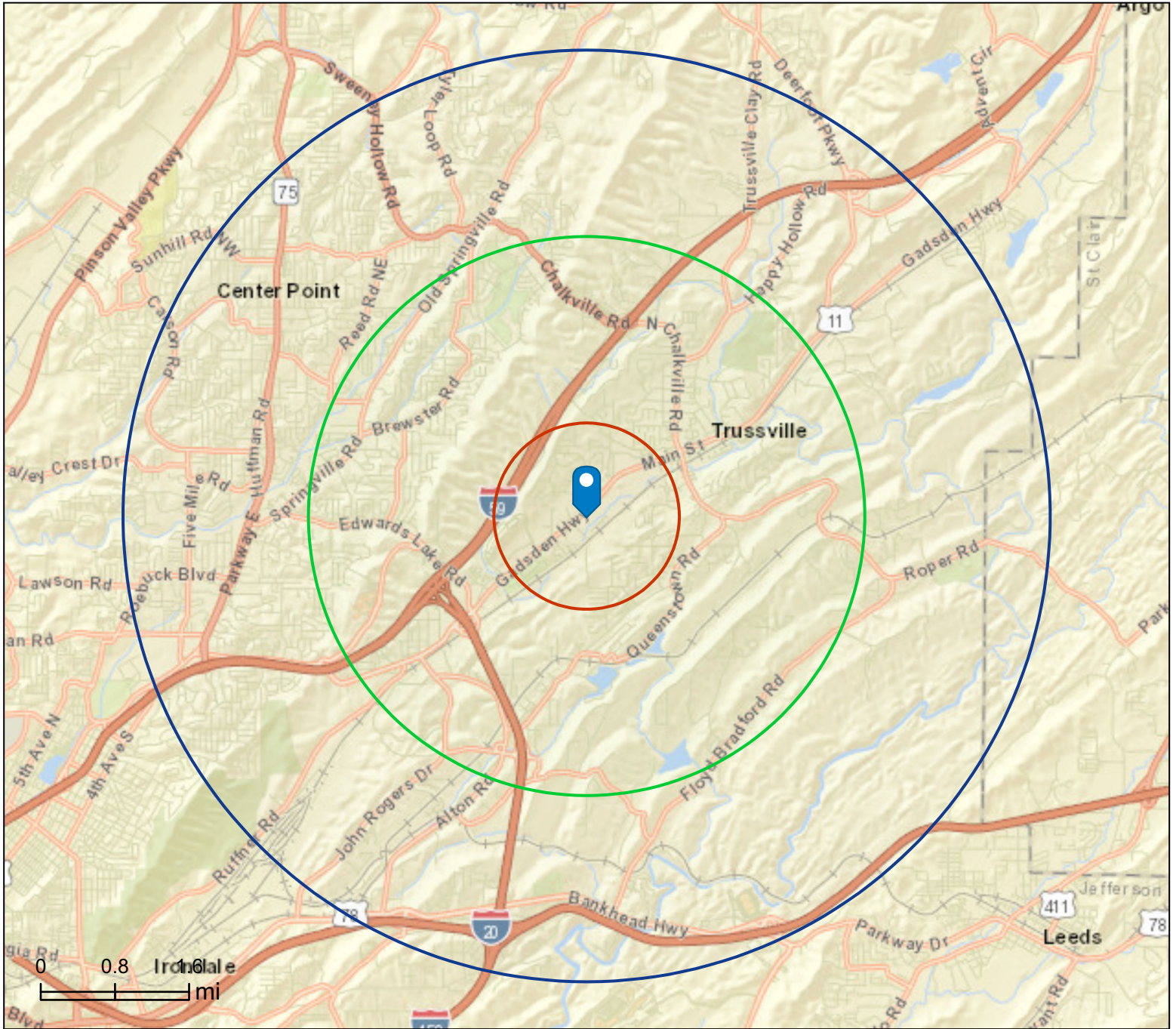


Site Details Map

Homestead Village
5431 Patrick Way, Birmingham, Alabama, 35235
Rings: 1, 3, 5 mile radii

Prepared by Esri
Latitude: 33.60934
Longitude: -86.62590



This site is located in:

- City:** Trussville
- County:** Jefferson County
- State:** Alabama
- ZIP Code:** 35235
- Census Tract:** 01073011108
- Census Block Group:** 010730111085
- CBSA:** Birmingham, AL Metropolitan Statistical Area

Demographic and Income Profile

Homestead Village
5431 Patrick Way, Birmingham, Alabama, 35235
Ring: 1 mile radius

Prepared by Esri
Latitude: 33.60934
Longitude: -86.62590

Summary	Census 2010	Census 2020	2024	2029
Population	4,291	5,225	5,392	5,315
Households	1,661	2,040	2,012	1,993
Families	1,172	1,418	1,388	1,376
Average Household Size	2.52	2.47	2.57	2.55
Owner Occupied Housing Units	1,318	1,556	1,542	1,531
Renter Occupied Housing Units	343	484	470	461
Median Age	40.4	42.4	43.3	44.8

Trends: 2024-2029 Annual Rate	Area	State	National
Population	-0.29%	0.31%	0.38%
Households	-0.19%	0.50%	0.64%
Families	-0.17%	0.47%	0.56%
Owner HHs	-0.14%	0.58%	0.97%
Median Household Income	3.31%	3.01%	2.95%

Households by Income	2024		2029	
	Number	Percent	Number	Percent
<\$15,000	115	5.7%	89	4.5%
\$15,000 - \$24,999	62	3.1%	45	2.3%
\$25,000 - \$34,999	70	3.5%	51	2.6%
\$35,000 - \$49,999	108	5.4%	85	4.3%
\$50,000 - \$74,999	266	13.2%	225	11.3%
\$75,000 - \$99,999	422	21.0%	384	19.3%
\$100,000 - \$149,999	331	16.5%	320	16.1%
\$150,000 - \$199,999	418	20.8%	513	25.7%
\$200,000+	221	11.0%	281	14.1%

Median Household Income	\$97,101	\$114,278
Average Household Income	\$123,402	\$143,408
Per Capita Income	\$46,898	\$54,775

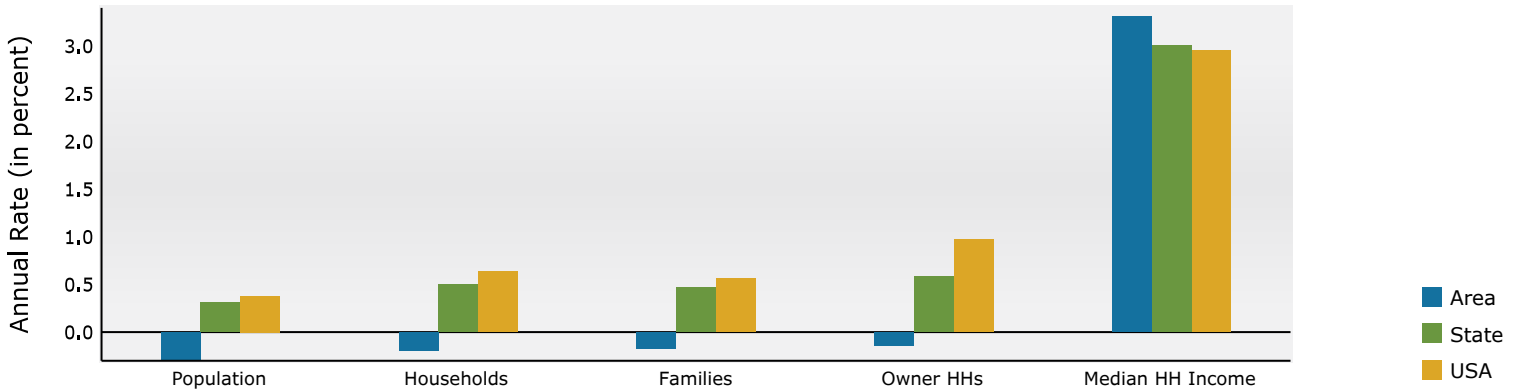
Population by Age	Census 2010		Census 2020		2024		2029	
	Number	Percent	Number	Percent	Number	Percent	Number	Percent
0 - 4	262	6.1%	239	4.6%	239	4.4%	228	4.3%
5 - 9	296	6.9%	330	6.3%	300	5.6%	264	5.0%
10 - 14	271	6.3%	371	7.1%	358	6.6%	310	5.8%
15 - 19	238	5.5%	320	6.1%	312	5.8%	292	5.5%
20 - 24	209	4.9%	262	5.0%	307	5.7%	299	5.6%
25 - 34	543	12.7%	591	11.3%	619	11.5%	645	12.1%
35 - 44	597	13.9%	685	13.1%	693	12.8%	630	11.9%
45 - 54	618	14.4%	634	12.1%	671	12.4%	681	12.8%
55 - 64	557	13.0%	639	12.2%	641	11.9%	642	12.1%
65 - 74	307	7.2%	632	12.1%	656	12.2%	654	12.3%
75 - 84	273	6.4%	320	6.1%	366	6.8%	429	8.1%
85+	118	2.7%	202	3.9%	232	4.3%	240	4.5%

Race and Ethnicity	Census 2010		Census 2020		2024		2029	
	Number	Percent	Number	Percent	Number	Percent	Number	Percent
White Alone	3,640	84.8%	3,991	76.4%	3,981	73.8%	3,807	71.6%
Black Alone	435	10.1%	726	13.9%	846	15.7%	906	17.0%
American Indian Alone	5	0.1%	18	0.3%	18	0.3%	18	0.3%
Asian Alone	130	3.0%	229	4.4%	257	4.8%	271	5.1%
Pacific Islander Alone	5	0.1%	3	0.1%	3	0.1%	3	0.1%
Some Other Race Alone	38	0.9%	52	1.0%	60	1.1%	68	1.3%
Two or More Races	37	0.9%	206	3.9%	227	4.2%	242	4.6%
Hispanic Origin (Any Race)	74	1.7%	144	2.8%	179	3.3%	200	3.8%

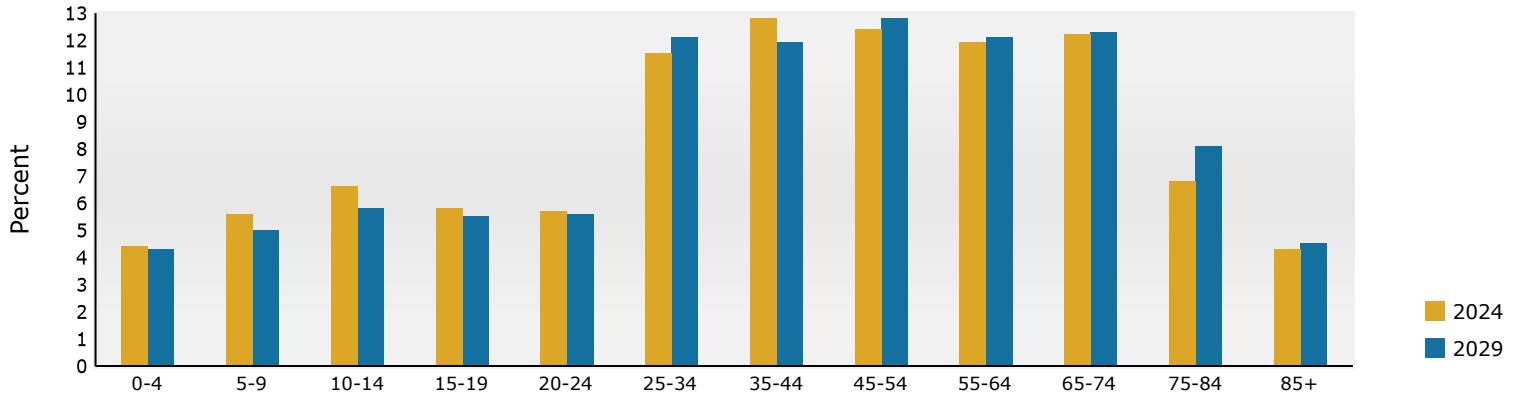
Data Note: Income is expressed in current dollars.

Source: Esri forecasts for 2024 and 2029. U.S. Census Bureau 2020 decennial Census in 2020 geographies.

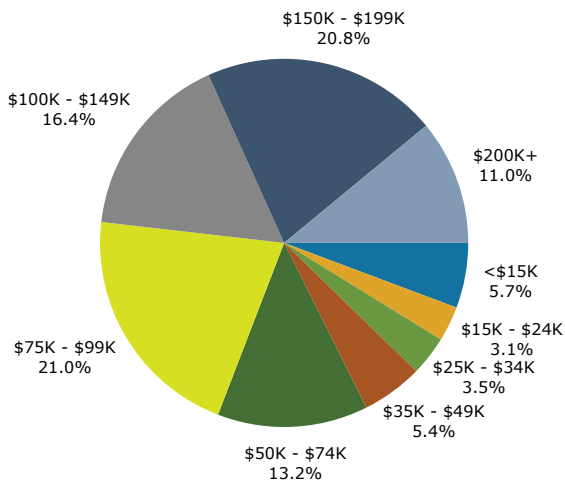
Trends 2024-2029



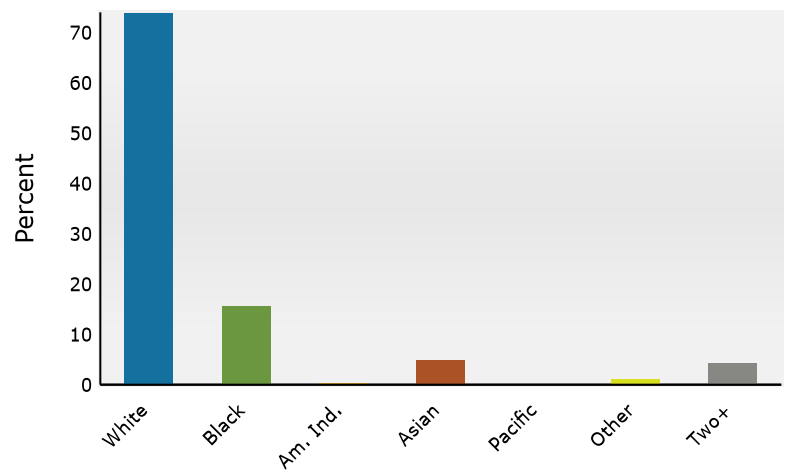
Population by Age



2024 Household Income



2024 Population by Race



2024 Percent Hispanic Origin: 3.3%

Source: Esri forecasts for 2024 and 2029. U.S. Census Bureau 2020 decennial Census in 2020 geographies.

Demographic and Income Profile

Homestead Village
5431 Patrick Way, Birmingham, Alabama, 35235
Ring: 3 mile radius

Prepared by Esri
Latitude: 33.60934
Longitude: -86.62590

Summary	Census 2010	Census 2020	2024	2029
Population	29,759	31,487	31,272	30,903
Households	11,569	12,114	11,895	11,778
Families	8,239	8,520	8,304	8,230
Average Household Size	2.55	2.57	2.59	2.58
Owner Occupied Housing Units	8,979	8,737	8,640	8,596
Renter Occupied Housing Units	2,590	3,377	3,255	3,183
Median Age	38.0	38.9	39.7	40.9

Trends: 2024-2029 Annual Rate	Area	State	National
Population	-0.24%	0.31%	0.38%
Households	-0.20%	0.50%	0.64%
Families	-0.18%	0.47%	0.56%
Owner HHs	-0.10%	0.58%	0.97%
Median Household Income	2.20%	3.01%	2.95%

Households by Income	2024		2029	
	Number	Percent	Number	Percent
<\$15,000	988	8.3%	823	7.0%
\$15,000 - \$24,999	601	5.1%	464	3.9%
\$25,000 - \$34,999	957	8.0%	762	6.5%
\$35,000 - \$49,999	1,278	10.7%	1,113	9.4%
\$50,000 - \$74,999	2,132	17.9%	2,009	17.1%
\$75,000 - \$99,999	1,744	14.7%	1,757	14.9%
\$100,000 - \$149,999	1,764	14.8%	1,847	15.7%
\$150,000 - \$199,999	1,287	10.8%	1,601	13.6%
\$200,000+	1,145	9.6%	1,402	11.9%

Median Household Income	\$74,867	\$83,475
Average Household Income	\$102,254	\$118,378
Per Capita Income	\$38,728	\$44,906

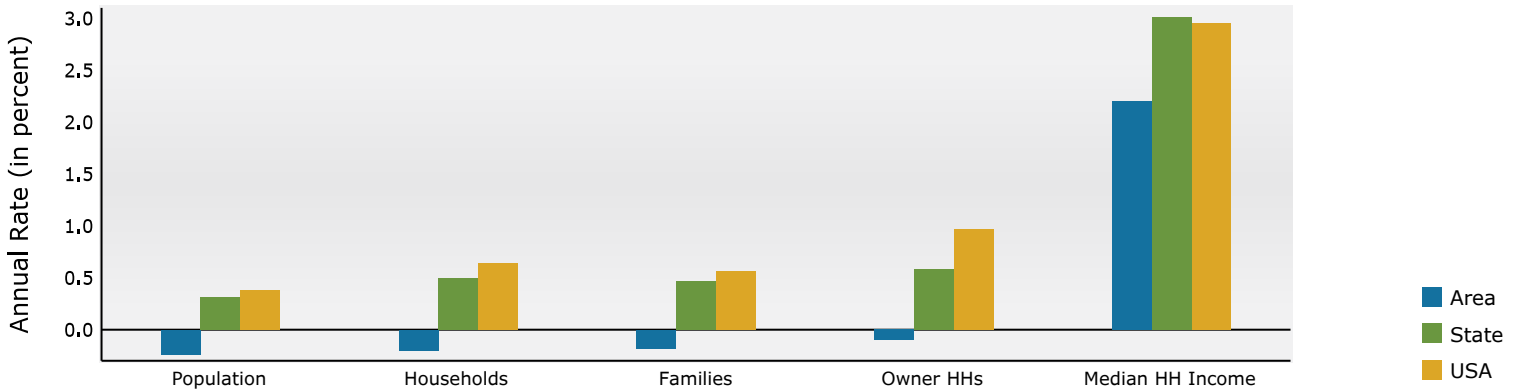
Population by Age	Census 2010		Census 2020		2024		2029	
	Number	Percent	Number	Percent	Number	Percent	Number	Percent
0 - 4	1,952	6.6%	1,807	5.7%	1,747	5.6%	1,670	5.4%
5 - 9	2,031	6.8%	2,039	6.5%	1,961	6.3%	1,755	5.7%
10 - 14	2,177	7.3%	2,373	7.5%	2,131	6.8%	2,008	6.5%
15 - 19	1,960	6.6%	2,205	7.0%	2,100	6.7%	1,894	6.1%
20 - 24	1,633	5.5%	1,836	5.8%	1,935	6.2%	1,855	6.0%
25 - 34	3,859	13.0%	3,839	12.2%	3,784	12.1%	3,932	12.7%
35 - 44	4,280	14.4%	4,279	13.6%	4,315	13.8%	4,065	13.2%
45 - 54	4,325	14.5%	3,965	12.6%	4,049	12.9%	4,108	13.3%
55 - 64	3,568	12.0%	3,943	12.5%	3,718	11.9%	3,594	11.6%
65 - 74	1,983	6.7%	3,118	9.9%	3,192	10.2%	3,304	10.7%
75 - 84	1,464	4.9%	1,433	4.6%	1,632	5.2%	1,965	6.4%
85+	525	1.8%	648	2.1%	708	2.3%	753	2.4%

Race and Ethnicity	Census 2010		Census 2020		2024		2029	
	Number	Percent	Number	Percent	Number	Percent	Number	Percent
White Alone	19,740	66.3%	16,941	53.8%	16,308	52.2%	15,483	50.1%
Black Alone	8,883	29.8%	11,868	37.7%	12,140	38.8%	12,435	40.2%
American Indian Alone	62	0.2%	90	0.3%	91	0.3%	93	0.3%
Asian Alone	429	1.4%	516	1.6%	548	1.8%	572	1.9%
Pacific Islander Alone	14	0.0%	7	0.0%	7	0.0%	8	0.0%
Some Other Race Alone	316	1.1%	716	2.3%	771	2.5%	844	2.7%
Two or More Races	317	1.1%	1,349	4.3%	1,406	4.5%	1,468	4.8%
Hispanic Origin (Any Race)	670	2.3%	1,267	4.0%	1,414	4.5%	1,533	5.0%

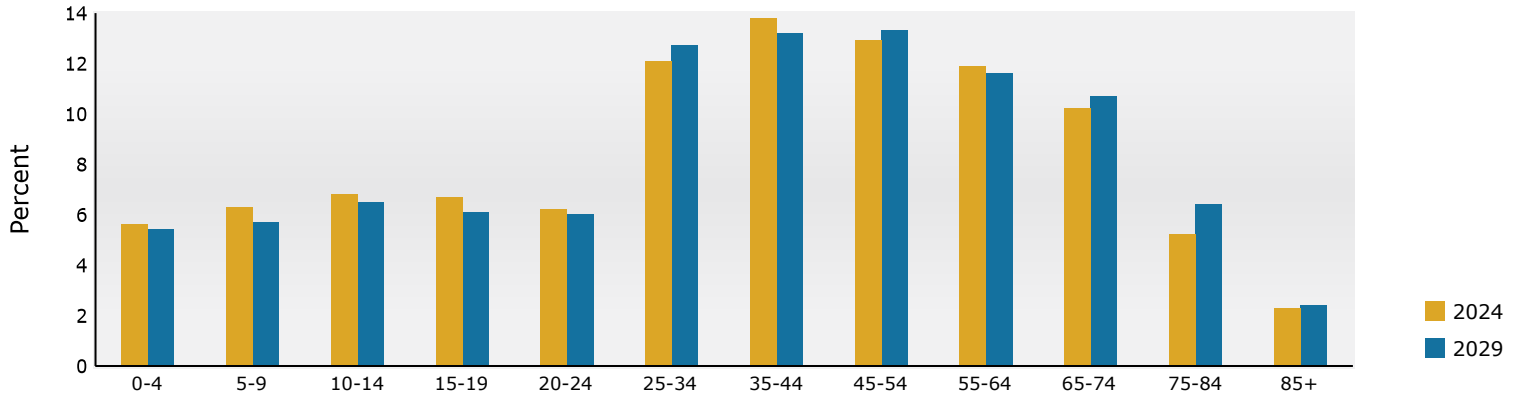
Data Note: Income is expressed in current dollars.

Source: Esri forecasts for 2024 and 2029. U.S. Census Bureau 2020 decennial Census in 2020 geographies.

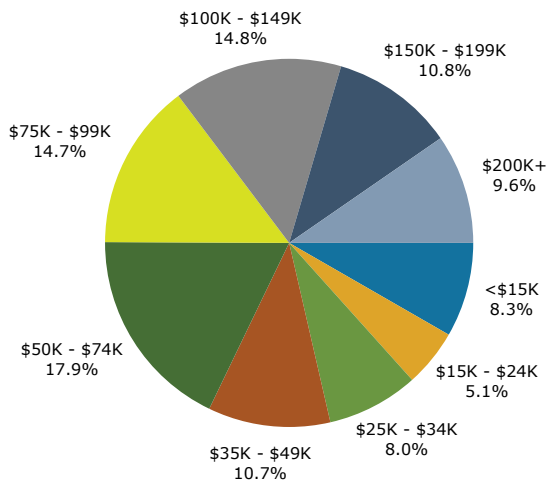
Trends 2024-2029



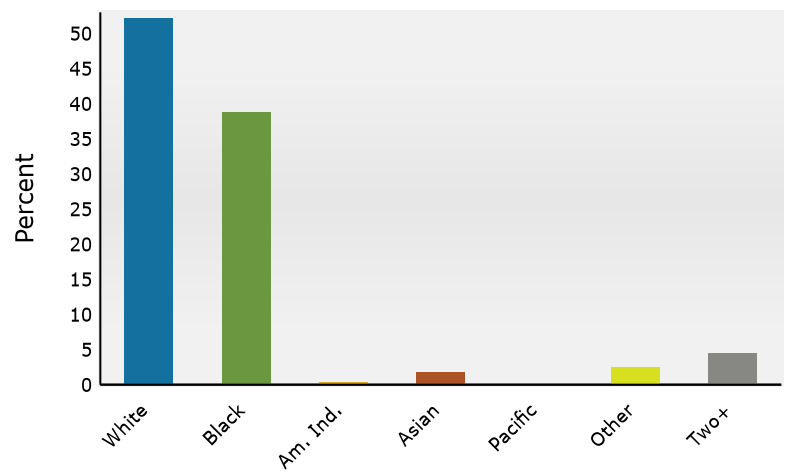
Population by Age



2024 Household Income



2024 Population by Race



2024 Percent Hispanic Origin: 4.5%

Source: Esri forecasts for 2024 and 2029. U.S. Census Bureau 2020 decennial Census in 2020 geographies.

Demographic and Income Profile

Homestead Village
5431 Patrick Way, Birmingham, Alabama, 35235
Ring: 5 mile radius

Prepared by Esri
Latitude: 33.60934
Longitude: -86.62590

Summary	Census 2010	Census 2020	2024	2029
Population	78,211	82,803	81,891	81,260
Households	30,289	31,258	30,869	30,698
Families	21,407	21,978	21,586	21,512
Average Household Size	2.57	2.63	2.63	2.62
Owner Occupied Housing Units	22,371	20,958	20,927	20,990
Renter Occupied Housing Units	7,918	10,300	9,942	9,708
Median Age	36.6	37.1	38.0	39.2

Trends: 2024-2029 Annual Rate	Area	State	National
Population	-0.15%	0.31%	0.38%
Households	-0.11%	0.50%	0.64%
Families	-0.07%	0.47%	0.56%
Owner HHs	0.06%	0.58%	0.97%
Median Household Income	3.32%	3.01%	2.95%

Households by Income	2024		2029	
	Number	Percent	Number	Percent
<\$15,000	2,746	8.9%	2,323	7.6%
\$15,000 - \$24,999	2,216	7.2%	1,736	5.7%
\$25,000 - \$34,999	3,123	10.1%	2,579	8.4%
\$35,000 - \$49,999	3,969	12.9%	3,564	11.6%
\$50,000 - \$74,999	4,947	16.0%	4,724	15.4%
\$75,000 - \$99,999	4,689	15.2%	4,854	15.8%
\$100,000 - \$149,999	4,244	13.7%	4,626	15.1%
\$150,000 - \$199,999	2,546	8.2%	3,299	10.7%
\$200,000+	2,390	7.7%	2,993	9.7%

Median Household Income	\$65,059	\$76,612
Average Household Income	\$91,478	\$106,738
Per Capita Income	\$34,369	\$40,179

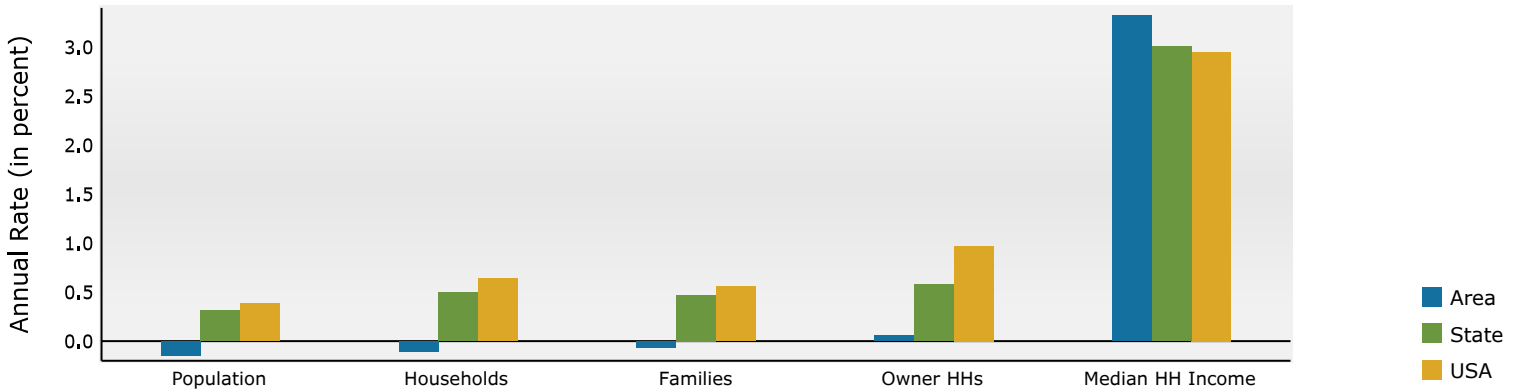
Population by Age	Census 2010		Census 2020		2024		2029	
	Number	Percent	Number	Percent	Number	Percent	Number	Percent
0 - 4	5,453	7.0%	5,135	6.2%	4,982	6.1%	4,815	5.9%
5 - 9	5,686	7.3%	5,840	7.1%	5,435	6.6%	4,863	6.0%
10 - 14	5,933	7.6%	6,589	8.0%	5,963	7.3%	5,445	6.7%
15 - 19	5,453	7.0%	5,931	7.2%	5,850	7.1%	5,389	6.6%
20 - 24	4,447	5.7%	5,012	6.1%	5,221	6.4%	5,271	6.5%
25 - 34	10,353	13.2%	10,536	12.7%	10,197	12.5%	10,480	12.9%
35 - 44	10,995	14.1%	11,041	13.3%	11,241	13.7%	10,742	13.2%
45 - 54	11,233	14.4%	10,259	12.4%	10,394	12.7%	10,511	12.9%
55 - 64	8,802	11.3%	10,246	12.4%	9,565	11.7%	9,206	11.3%
65 - 74	4,854	6.2%	7,396	8.9%	7,748	9.5%	8,242	10.1%
75 - 84	3,615	4.6%	3,308	4.0%	3,725	4.5%	4,634	5.7%
85+	1,388	1.8%	1,510	1.8%	1,570	1.9%	1,663	2.0%

Race and Ethnicity	Census 2010		Census 2020		2024		2029	
	Number	Percent	Number	Percent	Number	Percent	Number	Percent
White Alone	41,628	53.2%	34,211	41.3%	32,941	40.2%	31,373	38.6%
Black Alone	33,062	42.3%	41,468	50.1%	41,586	50.8%	42,149	51.9%
American Indian Alone	184	0.2%	262	0.3%	268	0.3%	268	0.3%
Asian Alone	686	0.9%	813	1.0%	850	1.0%	890	1.1%
Pacific Islander Alone	35	0.0%	27	0.0%	28	0.0%	29	0.0%
Some Other Race Alone	1,741	2.2%	2,501	3.0%	2,623	3.2%	2,843	3.5%
Two or More Races	875	1.1%	3,520	4.3%	3,596	4.4%	3,708	4.6%
Hispanic Origin (Any Race)	2,912	3.7%	4,563	5.5%	4,951	6.0%	5,277	6.5%

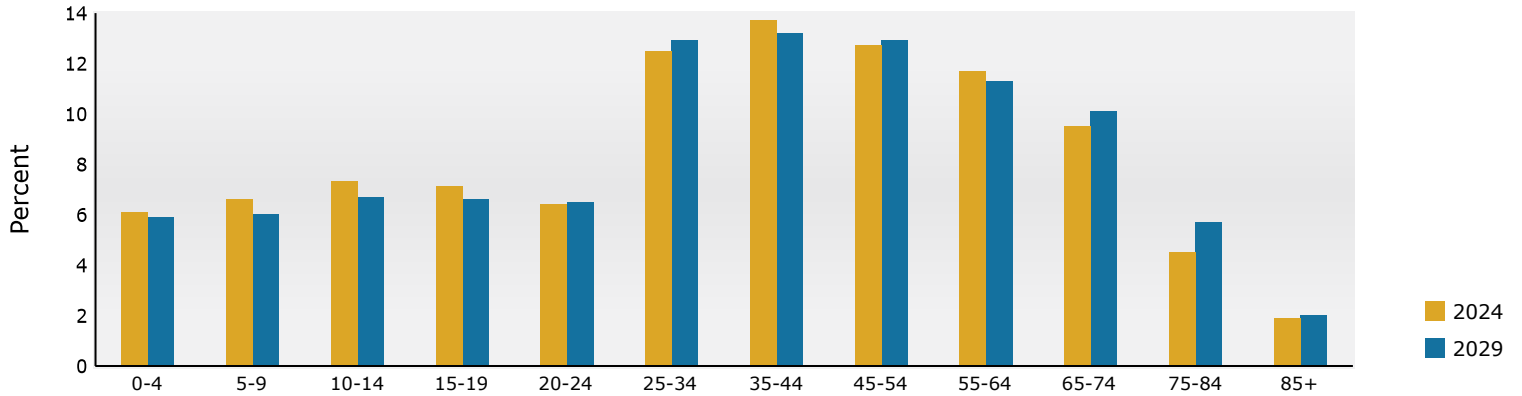
Data Note: Income is expressed in current dollars.

Source: Esri forecasts for 2024 and 2029. U.S. Census Bureau 2020 decennial Census in 2020 geographies.

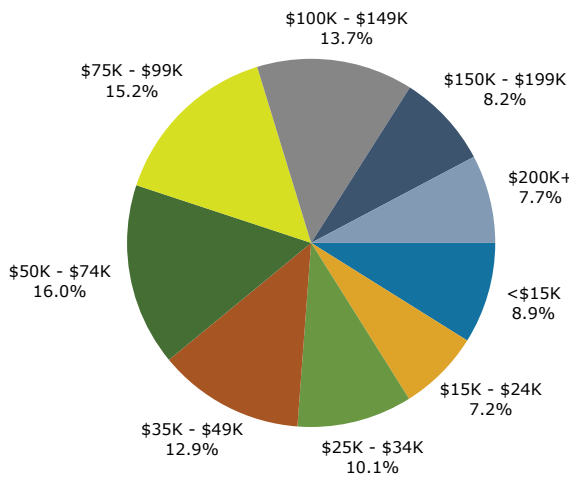
Trends 2024-2029



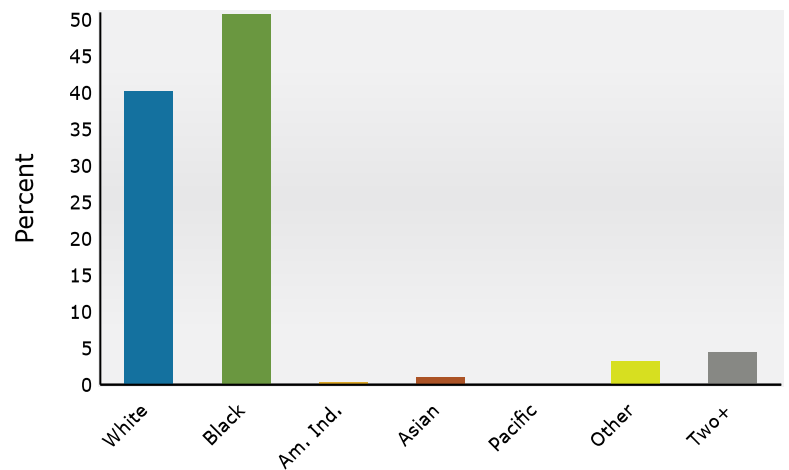
Population by Age



2024 Household Income



2024 Population by Race



2024 Percent Hispanic Origin: 6.0%

Source: Esri forecasts for 2024 and 2029. U.S. Census Bureau 2020 decennial Census in 2020 geographies.