

BALLWIN PLAZA

15425 Manchester Rd.
Ballwin, MO 63011

More Info:



St. Louis, MO

1,150 SF - 4,822 SF



Demographics (2022 Estimates)

	Population	Households	Average HH Income	Daytime Population
1 Mile	10,481	4,161	\$126,227	4,566
3 Miles	77,209	29,480	\$158,735	22,084
5 Miles	163,276	64,113	\$161,007	75,189
Trade Area	166,371	64,745	\$161,277	63,738

Highlights

- **Anchored by Schnucks Supermarket, the #1 grocer in the St. Louis MSA in addition to a diverse national credit tenant line-up.**
- **Ideally situated on Manchester Road, which serves as the dominant retail corridor for the western suburbs of St. Louis.**

KEY TENANTS



BRIAN NELTNER

400 Techne Center Drive
Suite 320
Milford, OH 45150
Direct: 513.332.9960
bneltner@selectstrat.com
www.selectstrat.com

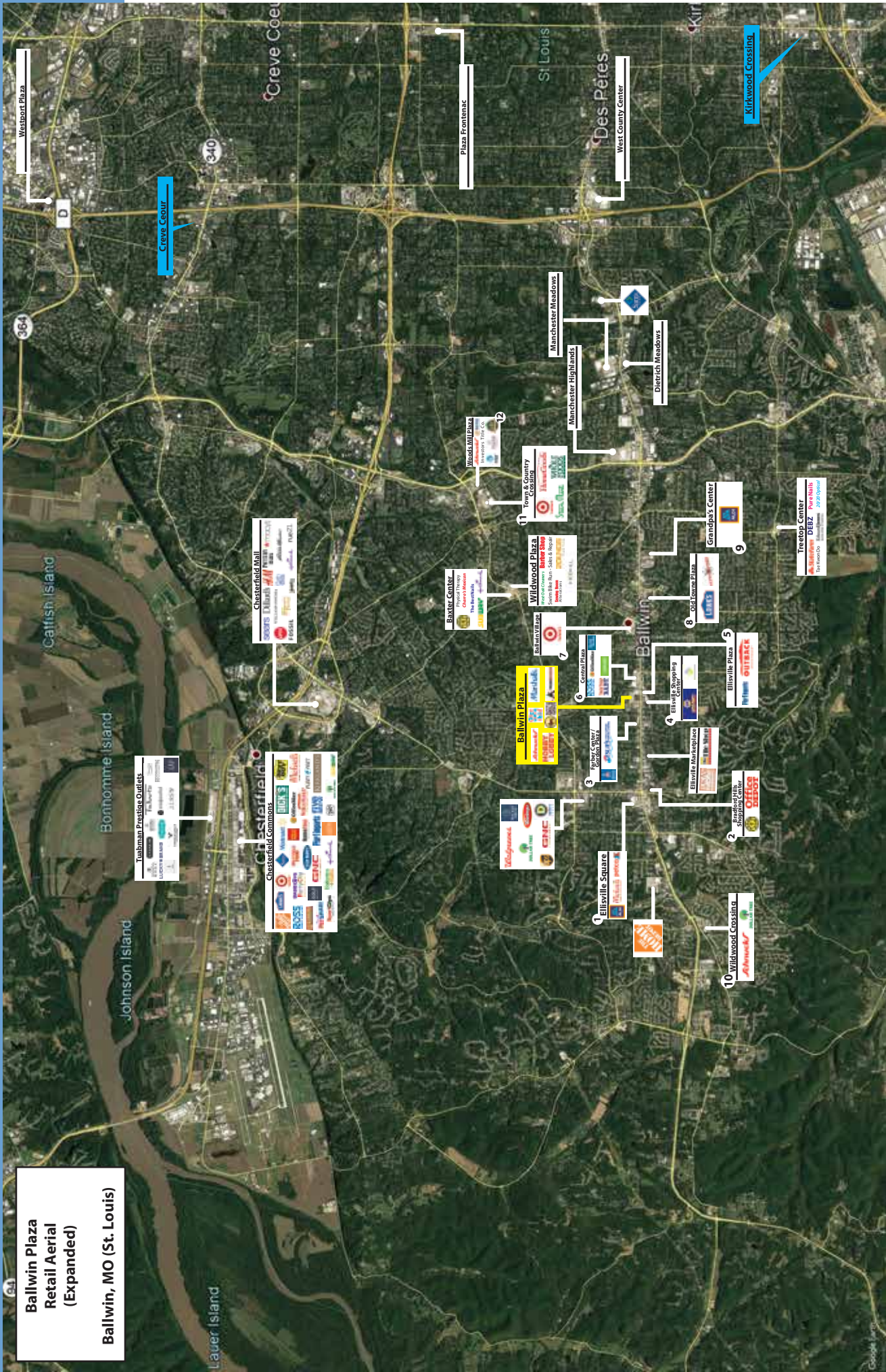
Traffic Counts

38,904 VPD - on Manchester Rd., directly in front of site.



**Ballwin Plaza
Retail Aerial
(Expanded)**

Ballwin, MO (St. Louis)



Westport Plaza

Creve Coeur

Plaza Frontenac

Manchester Meadows

Manchester Highlands

Dietrich Meadows

Kirkwood Crossing

West County Center

Chesterfield Mall

Tubman Prestige Outlets

Chesterfield Commons

Town & Country Crossings

Wildwood Plaza

Baker Center

Ballwin Plaza

Central Plaza

Ellisville Square

Ellisville Shopping Center

Grandpa's Center

Treenon Center

Wildwood Crossing

Kirkwood Crossing