

BALLWIN PLAZA

15425 Manchester Rd.
Ballwin, MO 63011

More Info:



St. Louis, MO

1,150 SF - 4,822 SF



Demographics (2023 Estimates)

	Population	Households	Average HH Income	Daytime Population
1 Mile	10,376	4,140	\$148,659	4,469
3 Miles	77,510	29,763	\$185,387	22,801
5 Miles	163,709	64,623	\$188,939	73,780
Trade Area	166,743	65,276	\$188,976	65,525

Highlights

- Anchored by Schnucks Supermarket, the #1 grocer in the St. Louis MSA in addition to a diverse national credit tenant line-up.
- Ideally situated on Manchester Road, which serves as the dominant retail corridor for the western suburbs of St. Louis.

KEY TENANTS



BRIAN NELTNER

400 Techne Center Drive
Suite 320
Milford, OH 45150
Direct: 513.332.9960
bneltner@selectstrat.com
www.selectstrat.com

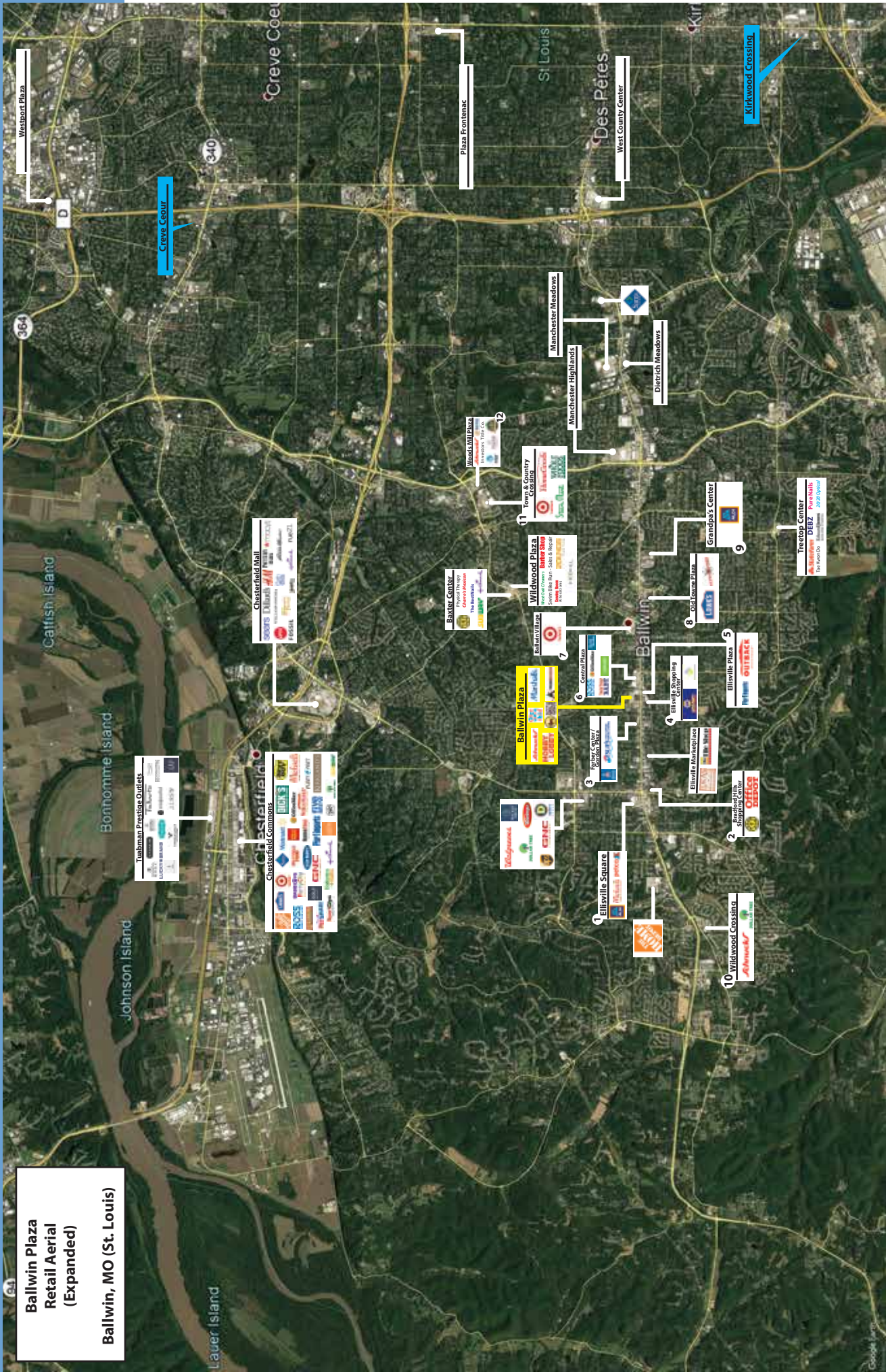
Traffic Counts

38,904 VPD - on Manchester Rd., directly in front of site.



**Ballwin Plaza
Retail Aerial
(Expanded)**

Ballwin, MO (St. Louis)



Westport Plaza

Creve Coeur

Plaza Frontenac

Manchester Meadows

Manchester Highlands

Dietrich Meadows

Kirkwood Crossing

West County Center