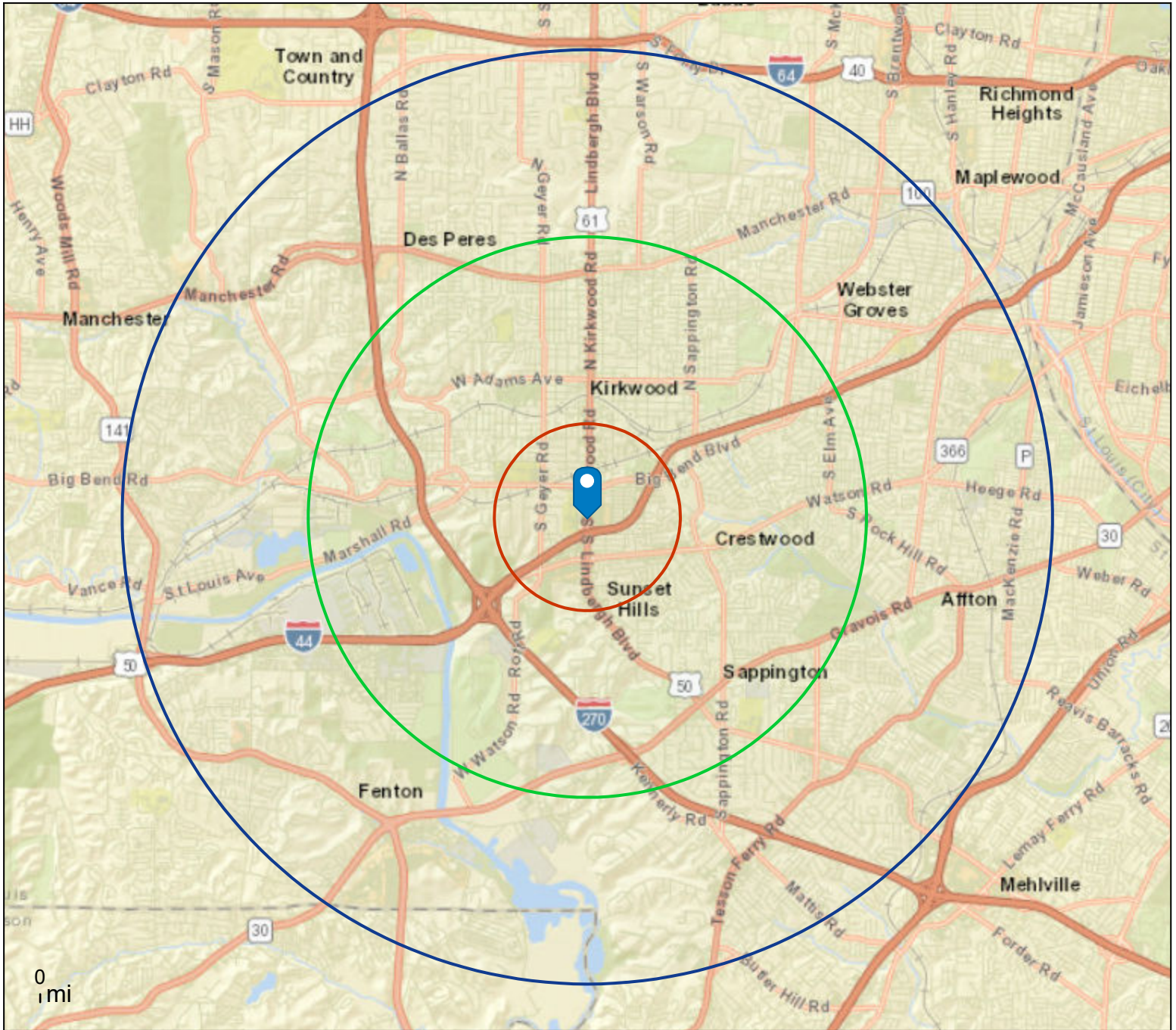


Kirkwood Crossing 1,3,5
1259 S Kirkwood Rd, Saint Louis, Missouri, 63122
Rings: 1, 3, 5 mile radii

Prepared by Esri
Latitude: 38.56179
Longitude: -90.40695



This site is located in:

City: Kirkwood
County: St. Louis County
State: Missouri
ZIP Code: 63122
Census Tract: 29189221100
Census Block Group: 291892211001
CBSA: St. Louis, MO-IL Metropolitan Statistical Area



Demographic and Income Profile

Kirkwood Crossing 1,3,5
 1259 S Kirkwood Rd, Saint Louis, Missouri, 63122
 Ring: 1 mile radius

Prepared by Esri
 Latitude: 38.56179
 Longitude: -90.40695

Summary	Census 2010	Census 2020	2023	2028
Population	7,992	8,055	7,894	7,730
Households	3,453	3,506	3,481	3,449
Families	2,032	1,996	1,951	1,925
Average Household Size	2.26	2.27	2.24	2.21
Owner Occupied Housing Units	2,330	2,341	2,351	2,358
Renter Occupied Housing Units	1,123	1,165	1,130	1,092
Median Age	41.3	41.1	43.9	44.8

Trends: 2023-2028 Annual Rate	Area	State	National
Population	-0.42%	0.10%	0.30%
Households	-0.18%	0.28%	0.49%
Families	-0.27%	0.21%	0.44%
Owner HHs	0.06%	0.43%	0.66%
Median Household Income	3.74%	2.94%	2.57%

Households by Income	2023		2028	
	Number	Percent	Number	Percent
<\$15,000	268	7.7%	225	6.5%
\$15,000 - \$24,999	283	8.1%	236	6.8%
\$25,000 - \$34,999	269	7.7%	231	6.7%
\$35,000 - \$49,999	442	12.7%	400	11.6%
\$50,000 - \$74,999	537	15.4%	441	12.8%
\$75,000 - \$99,999	410	11.8%	392	11.4%
\$100,000 - \$149,999	502	14.4%	564	16.4%
\$150,000 - \$199,999	340	9.8%	461	13.4%
\$200,000+	429	12.3%	501	14.5%

Median Household Income	\$71,310	\$85,676
Average Household Income	\$112,235	\$130,483
Per Capita Income	\$48,695	\$57,312

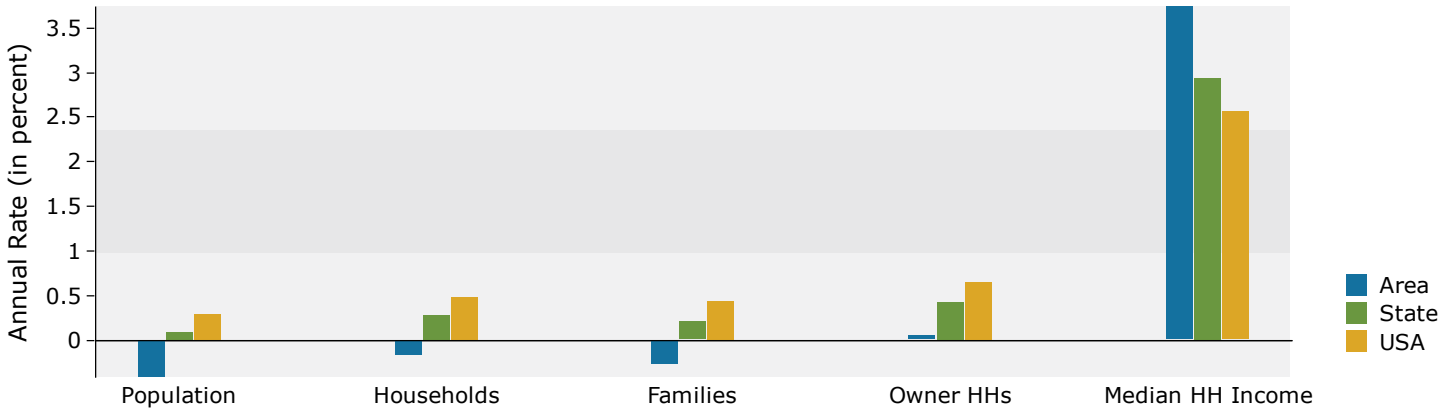
Population by Age	Census 2010		Census 2020		2023		2028	
	Number	Percent	Number	Percent	Number	Percent	Number	Percent
0 - 4	521	6.5%	527	6.5%	417	5.3%	412	5.3%
5 - 9	500	6.3%	579	7.2%	418	5.3%	406	5.3%
10 - 14	493	6.2%	493	6.1%	465	5.9%	429	5.5%
15 - 19	502	6.3%	482	6.0%	473	6.0%	430	5.6%
20 - 24	368	4.6%	321	4.0%	425	5.4%	425	5.5%
25 - 34	1,032	12.9%	913	11.3%	904	11.5%	922	11.9%
35 - 44	891	11.1%	1,099	13.6%	950	12.0%	858	11.1%
45 - 54	1,087	13.6%	863	10.7%	842	10.7%	869	11.2%
55 - 64	913	11.4%	996	12.4%	1,032	13.1%	890	11.5%
65 - 74	734	9.2%	866	10.8%	905	11.5%	929	12.0%
75 - 84	605	7.6%	582	7.2%	707	9.0%	753	9.7%
85+	345	4.3%	334	4.1%	357	4.5%	407	5.3%

Race and Ethnicity	Census 2010		Census 2020		2023		2028	
	Number	Percent	Number	Percent	Number	Percent	Number	Percent
White Alone	6,104	76.4%	6,110	75.9%	5,940	75.3%	5,705	73.8%
Black Alone	1,490	18.6%	1,148	14.3%	1,132	14.3%	1,116	14.4%
American Indian Alone	16	0.2%	11	0.1%	11	0.1%	11	0.1%
Asian Alone	149	1.9%	141	1.8%	143	1.8%	153	2.0%
Pacific Islander Alone	4	0.1%	2	0.0%	2	0.0%	2	0.0%
Some Other Race Alone	64	0.8%	90	1.1%	92	1.2%	99	1.3%
Two or More Races	165	2.1%	553	6.9%	573	7.3%	644	8.3%
Hispanic Origin (Any Race)	184	2.3%	251	3.1%	266	3.4%	289	3.7%

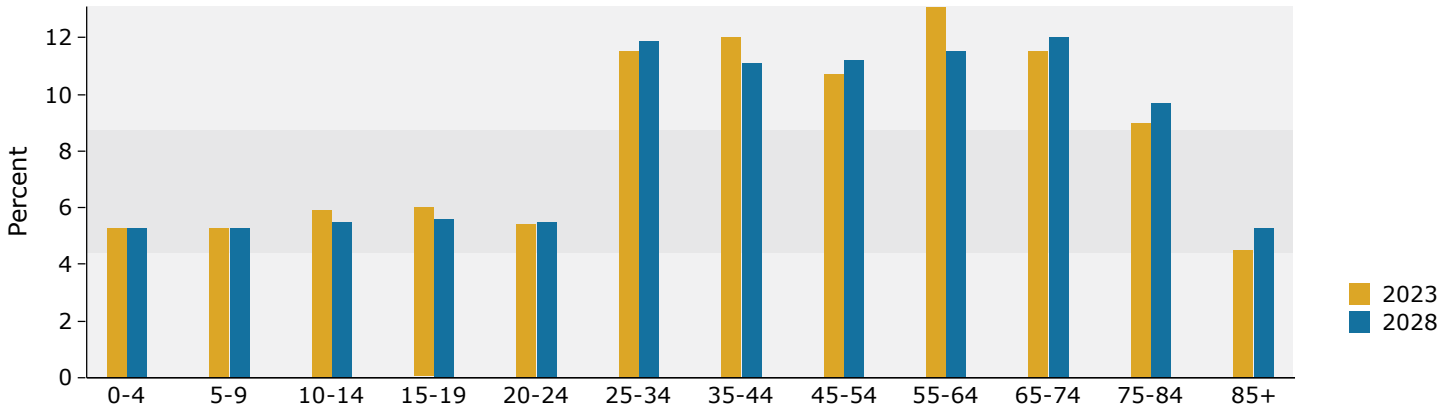
Data Note: Income is expressed in current dollars.

Source: Esri forecasts for 2023 and 2028. U.S. Census Bureau 2020 decennial Census in 2020 geographies.

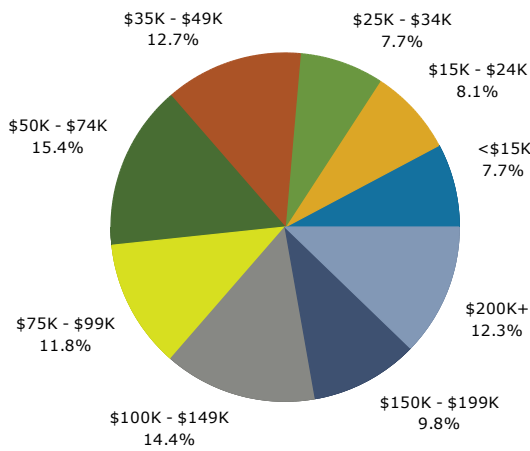
Trends 2023-2028



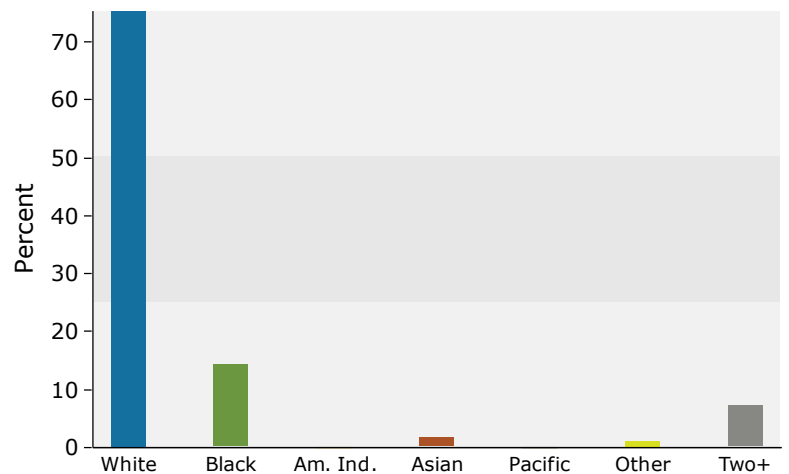
Population by Age



2023 Household Income



2023 Population by Race



2023 Percent Hispanic Origin: 3.4%



Demographic and Income Profile

Kirkwood Crossing 1,3,5
 1259 S Kirkwood Rd, Saint Louis, Missouri, 63122
 Ring: 3 mile radius

Prepared by Esri
 Latitude: 38.56179
 Longitude: -90.40695

Summary	Census 2010	Census 2020	2023	2028
Population	66,552	70,819	70,373	69,423
Households	27,999	28,684	28,572	28,408
Families	18,382	19,220	18,011	17,841
Average Household Size	2.35	2.43	2.43	2.41
Owner Occupied Housing Units	23,043	23,388	23,322	23,327
Renter Occupied Housing Units	4,956	5,296	5,250	5,081
Median Age	44.2	43.0	46.5	47.2

Trends: 2023-2028 Annual Rate	Area	State	National
Population	-0.27%	0.10%	0.30%
Households	-0.12%	0.28%	0.49%
Families	-0.19%	0.21%	0.44%
Owner HHs	0.00%	0.43%	0.66%
Median Household Income	2.67%	2.94%	2.57%

Households by Income	2023		2028	
	Number	Percent	Number	Percent
<\$15,000	1,377	4.8%	1,107	3.9%
\$15,000 - \$24,999	1,384	4.8%	1,003	3.5%
\$25,000 - \$34,999	1,060	3.7%	851	3.0%
\$35,000 - \$49,999	2,327	8.1%	1,965	6.9%
\$50,000 - \$74,999	3,593	12.6%	3,096	10.9%
\$75,000 - \$99,999	3,364	11.8%	3,091	10.9%
\$100,000 - \$149,999	5,530	19.4%	5,586	19.7%
\$150,000 - \$199,999	3,809	13.3%	4,826	17.0%
\$200,000+	6,127	21.4%	6,882	24.2%

Median Household Income	\$107,547	\$122,707
Average Household Income	\$156,040	\$176,793
Per Capita Income	\$63,049	\$72,002

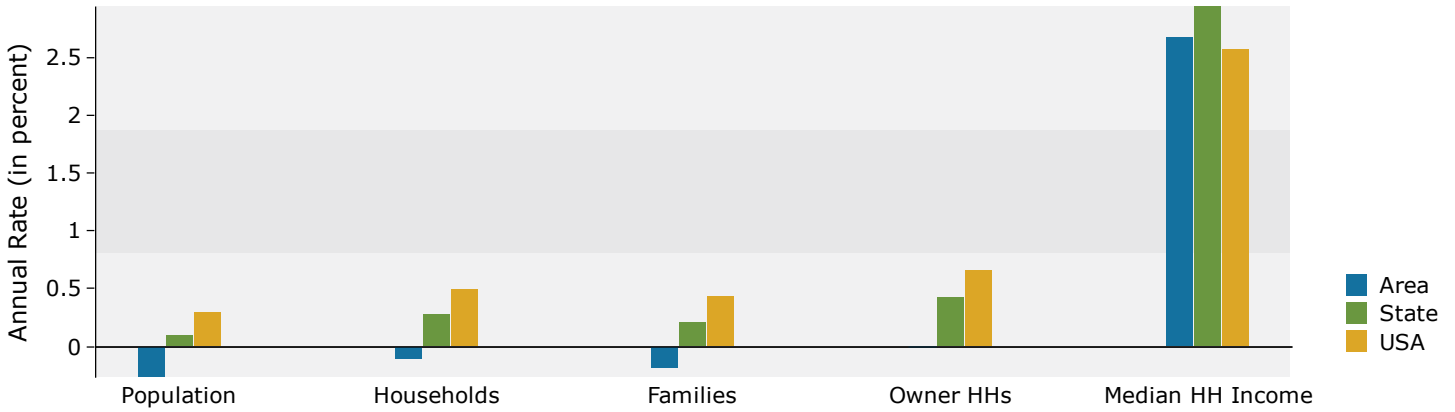
Population by Age	Census 2010		Census 2020		2023		2028	
	Number	Percent	Number	Percent	Number	Percent	Number	Percent
0 - 4	3,830	5.8%	4,266	6.0%	3,375	4.8%	3,318	4.8%
5 - 9	4,291	6.4%	4,882	6.9%	3,882	5.5%	3,831	5.5%
10 - 14	4,463	6.7%	4,863	6.9%	4,526	6.4%	4,114	5.9%
15 - 19	4,013	6.0%	4,393	6.2%	4,245	6.0%	3,901	5.6%
20 - 24	2,551	3.8%	2,850	4.0%	3,304	4.7%	3,109	4.5%
25 - 34	6,799	10.2%	6,546	9.2%	6,505	9.2%	6,718	9.7%
35 - 44	8,001	12.0%	9,370	13.2%	8,188	11.6%	7,822	11.3%
45 - 54	10,559	15.9%	8,401	11.9%	8,440	12.0%	8,382	12.1%
55 - 64	9,601	14.4%	9,680	13.7%	10,491	14.9%	9,012	13.0%
65 - 74	5,627	8.5%	8,412	11.9%	9,382	13.3%	9,759	14.1%
75 - 84	4,587	6.9%	4,525	6.4%	5,357	7.6%	6,518	9.4%
85+	2,231	3.4%	2,632	3.7%	2,679	3.8%	2,939	4.2%

Race and Ethnicity	Census 2010		Census 2020		2023		2028	
	Number	Percent	Number	Percent	Number	Percent	Number	Percent
White Alone	61,413	92.3%	62,577	88.4%	61,857	87.9%	60,132	86.6%
Black Alone	2,493	3.7%	2,254	3.2%	2,240	3.2%	2,238	3.2%
American Indian Alone	89	0.1%	110	0.2%	111	0.2%	119	0.2%
Asian Alone	1,260	1.9%	1,390	2.0%	1,436	2.0%	1,558	2.2%
Pacific Islander Alone	21	0.0%	18	0.0%	20	0.0%	21	0.0%
Some Other Race Alone	301	0.5%	555	0.8%	580	0.8%	637	0.9%
Two or More Races	976	1.5%	3,916	5.5%	4,128	5.9%	4,719	6.8%
Hispanic Origin (Any Race)	1,252	1.9%	2,012	2.8%	2,171	3.1%	2,403	3.5%

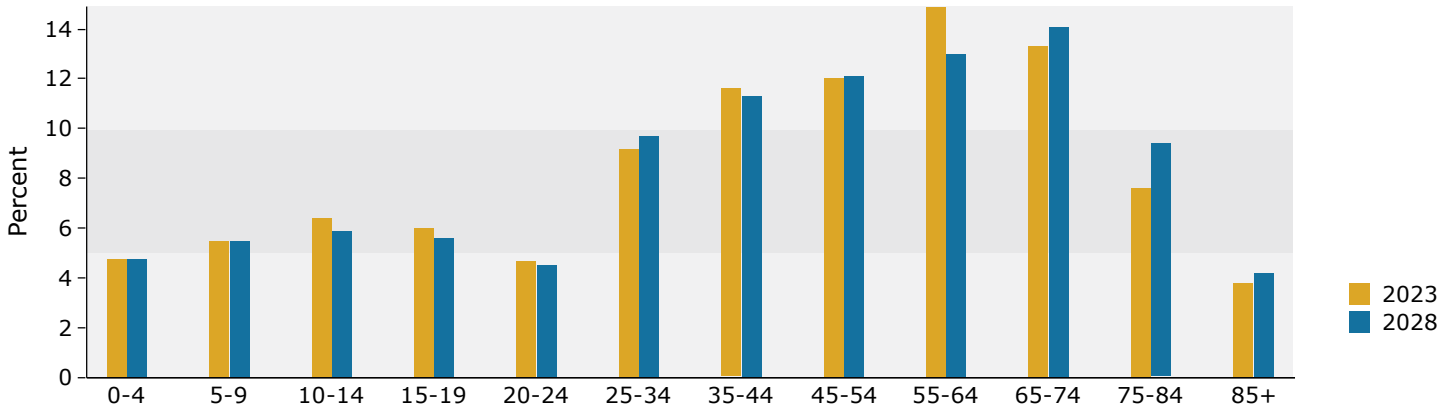
Data Note: Income is expressed in current dollars.

Source: Esri forecasts for 2023 and 2028. U.S. Census Bureau 2020 decennial Census in 2020 geographies.

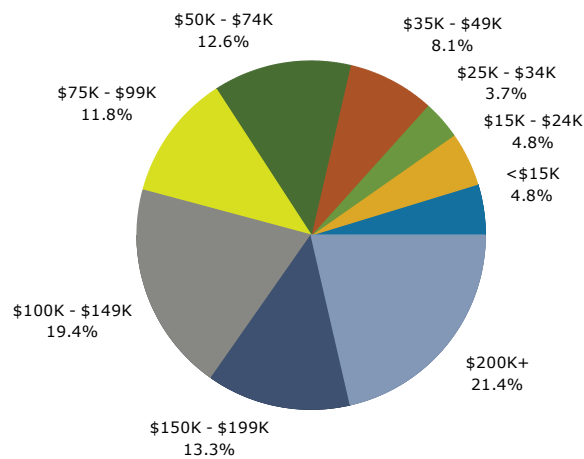
Trends 2023-2028



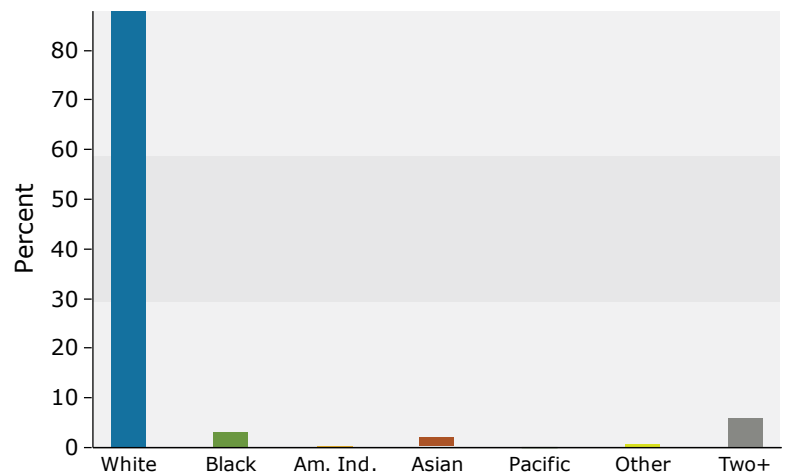
Population by Age



2023 Household Income



2023 Population by Race



2023 Percent Hispanic Origin: 3.1%

Source: Esri forecasts for 2023 and 2028. U.S. Census Bureau 2020 decennial Census in 2020 geographies.



Demographic and Income Profile

Kirkwood Crossing 1,3,5
 1259 S Kirkwood Rd, Saint Louis, Missouri, 63122
 Ring: 5 mile radius

Prepared by Esri
 Latitude: 38.56179
 Longitude: -90.40695

Summary	Census 2010	Census 2020	2023	2028
Population	183,813	191,905	190,595	188,034
Households	77,222	79,709	79,511	79,166
Families	49,628	51,112	49,144	48,746
Average Household Size	2.34	2.37	2.36	2.34
Owner Occupied Housing Units	60,268	60,867	61,711	61,999
Renter Occupied Housing Units	16,954	18,842	17,800	17,168
Median Age	43.0	42.8	44.9	45.8

Trends: 2023-2028 Annual Rate	Area	State	National
Population	-0.27%	0.10%	0.30%
Households	-0.09%	0.28%	0.49%
Families	-0.16%	0.21%	0.44%
Owner HHs	0.09%	0.43%	0.66%
Median Household Income	2.85%	2.94%	2.57%

Households by Income	2023		2028	
	Number	Percent	Number	Percent
<\$15,000	4,355	5.5%	3,565	4.5%
\$15,000 - \$24,999	4,039	5.1%	2,919	3.7%
\$25,000 - \$34,999	3,647	4.6%	2,989	3.8%
\$35,000 - \$49,999	7,822	9.8%	6,679	8.4%
\$50,000 - \$74,999	11,471	14.4%	10,114	12.8%
\$75,000 - \$99,999	10,584	13.3%	10,046	12.7%
\$100,000 - \$149,999	14,306	18.0%	14,861	18.8%
\$150,000 - \$199,999	8,774	11.0%	11,326	14.3%
\$200,000+	14,513	18.3%	16,666	21.1%
Median Household Income	\$93,720		\$107,852	
Average Household Income	\$142,648		\$162,954	
Per Capita Income	\$59,593		\$68,705	

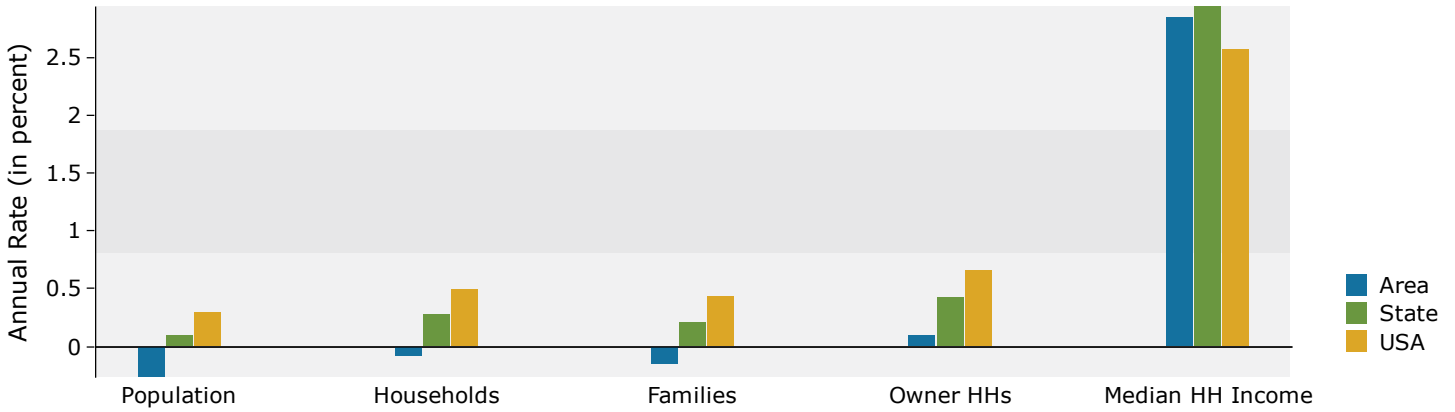
Population by Age	Census 2010		Census 2020		2023		2028	
	Number	Percent	Number	Percent	Number	Percent	Number	Percent
0 - 4	10,312	5.6%	10,761	5.6%	9,003	4.7%	8,888	4.7%
5 - 9	11,234	6.1%	11,849	6.2%	10,305	5.4%	10,041	5.3%
10 - 14	11,946	6.5%	12,173	6.3%	11,749	6.2%	10,818	5.8%
15 - 19	11,389	6.2%	11,701	6.1%	11,329	5.9%	10,694	5.7%
20 - 24	8,901	4.8%	9,516	5.0%	9,882	5.2%	9,215	4.9%
25 - 34	20,805	11.3%	20,536	10.7%	20,089	10.5%	19,691	10.5%
35 - 44	22,013	12.0%	24,612	12.8%	23,074	12.1%	22,748	12.1%
45 - 54	29,007	15.8%	22,399	11.7%	22,155	11.6%	22,190	11.8%
55 - 64	25,301	13.8%	26,655	13.9%	27,737	14.6%	23,688	12.6%
65 - 74	14,809	8.1%	22,532	11.7%	24,265	12.7%	25,451	13.5%
75 - 84	11,957	6.5%	12,183	6.3%	13,982	7.3%	16,869	9.0%
85+	6,137	3.3%	6,987	3.6%	7,027	3.7%	7,740	4.1%

Race and Ethnicity	Census 2010		Census 2020		2023		2028	
	Number	Percent	Number	Percent	Number	Percent	Number	Percent
White Alone	168,323	91.6%	166,748	86.9%	164,604	86.4%	159,742	85.0%
Black Alone	6,632	3.6%	6,462	3.4%	6,436	3.4%	6,447	3.4%
American Indian Alone	289	0.2%	333	0.2%	340	0.2%	359	0.2%
Asian Alone	4,722	2.6%	5,545	2.9%	5,722	3.0%	6,164	3.3%
Pacific Islander Alone	53	0.0%	46	0.0%	50	0.0%	54	0.0%
Some Other Race Alone	982	0.5%	1,753	0.9%	1,850	1.0%	2,046	1.1%
Two or More Races	2,813	1.5%	11,019	5.7%	11,594	6.1%	13,221	7.0%
Hispanic Origin (Any Race)	3,718	2.0%	5,957	3.1%	6,436	3.4%	7,132	3.8%

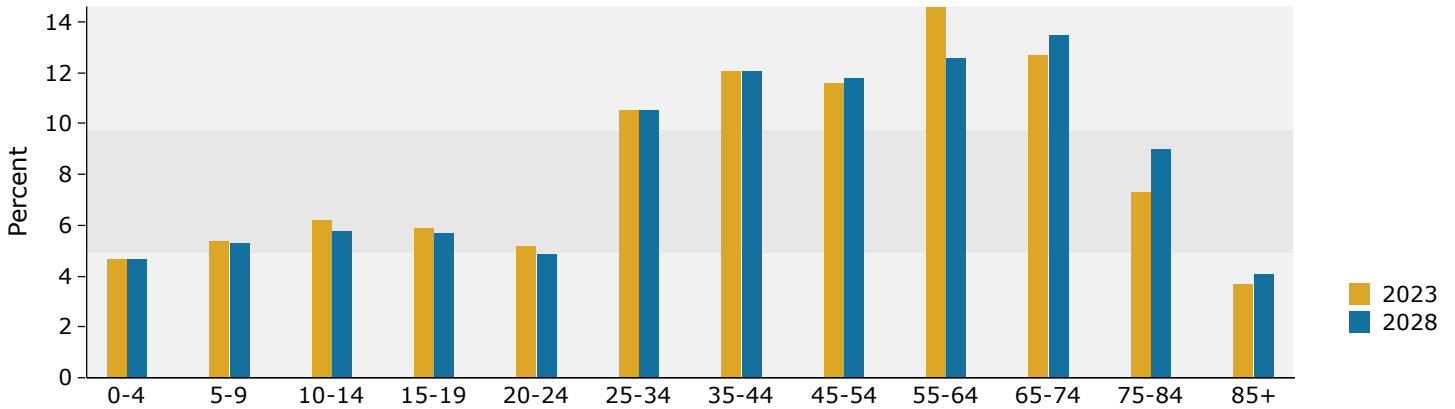
Data Note: Income is expressed in current dollars.

Source: Esri forecasts for 2023 and 2028. U.S. Census Bureau 2020 decennial Census in 2020 geographies.

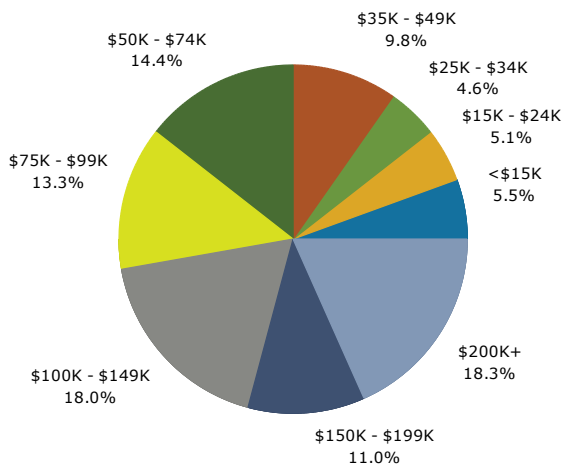
Trends 2023-2028



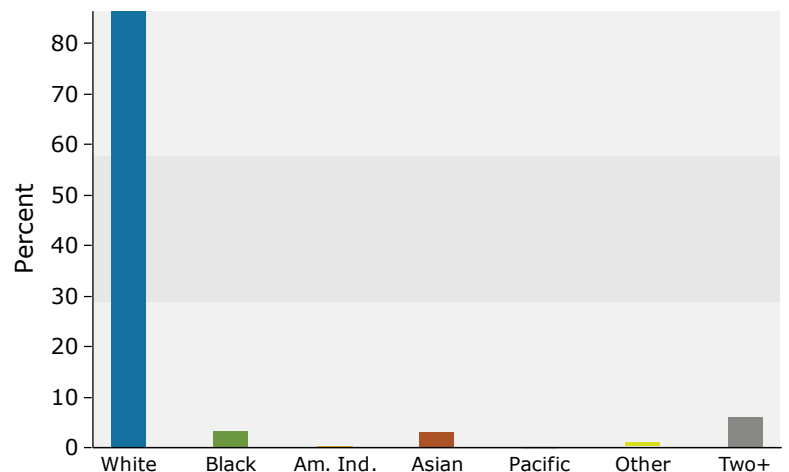
Population by Age



2023 Household Income



2023 Population by Race



2023 Percent Hispanic Origin: 3.4%

Source: Esri forecasts for 2023 and 2028. U.S. Census Bureau 2020 decennial Census in 2020 geographies.



Business Summary

Kirkwood Crossing 1,3,5
 1259 S Kirkwood Rd, Saint Louis, Missouri, 63122
 Rings: 1, 3, 5 mile radii

Prepared by Esri
 Latitude: 38.56179
 Longitude: -90.40695

Data for all businesses in area	1 mile		3 miles		5 miles							
Total Businesses:	845		3,241		8,729							
Total Employees:	14,130		50,685		142,452							
Total Residential Population:	7,894		70,373		190,595							
Employee/Residential Population Ratio (per 100 Residents)	179		72		75							
by SIC Codes	Businesses		Employees		Businesses		Employees		Businesses		Employees	
	Number	Percent	Number	Percent	Number	Percent	Number	Percent	Number	Percent	Number	Percent
Agriculture & Mining	12	1.4%	125	0.9%	57	1.8%	622	1.2%	144	1.6%	1,556	1.1%
Construction	43	5.1%	475	3.4%	230	7.1%	2,748	5.4%	578	6.6%	6,429	4.5%
Manufacturing	10	1.2%	116	0.8%	132	4.1%	3,569	7.0%	344	3.9%	8,828	6.2%
Transportation	7	0.8%	83	0.6%	67	2.1%	7,094	14.0%	161	1.8%	9,164	6.4%
Communication	7	0.8%	64	0.5%	24	0.7%	266	0.5%	59	0.7%	795	0.6%
Utility	2	0.2%	8	0.1%	12	0.4%	268	0.5%	21	0.2%	349	0.2%
Wholesale Trade	13	1.5%	101	0.7%	132	4.1%	2,114	4.2%	339	3.9%	5,178	3.6%
Retail Trade Summary	175	20.7%	4,700	33.3%	567	17.5%	10,621	21.0%	1,725	19.8%	31,557	22.2%
Home Improvement	7	0.8%	463	3.3%	43	1.3%	929	1.8%	103	1.2%	1,615	1.1%
General Merchandise Stores	11	1.3%	1,072	7.6%	17	0.5%	1,286	2.5%	63	0.7%	3,858	2.7%
Food Stores	13	1.5%	92	0.7%	44	1.4%	813	1.6%	144	1.6%	3,989	2.8%
Auto Dealers & Gas Stations	17	2.0%	246	1.7%	53	1.6%	1,029	2.0%	149	1.7%	2,985	2.1%
Apparel & Accessory Stores	9	1.1%	81	0.6%	40	1.2%	481	0.9%	167	1.9%	2,135	1.5%
Furniture & Home Furnishings	11	1.3%	90	0.6%	51	1.6%	428	0.8%	144	1.6%	1,447	1.0%
Eating & Drinking Places	68	8.0%	2,221	15.7%	172	5.3%	4,361	8.6%	522	6.0%	11,600	8.1%
Miscellaneous Retail	39	4.6%	436	3.1%	146	4.5%	1,295	2.6%	431	4.9%	3,929	2.8%
Finance, Insurance, Real Estate Summary	116	13.7%	959	6.8%	395	12.2%	2,909	5.7%	1,077	12.3%	10,432	7.3%
Banks, Savings & Lending Institutions	24	2.8%	190	1.3%	62	1.9%	513	1.0%	185	2.1%	1,760	1.2%
Securities Brokers	31	3.7%	116	0.8%	85	2.6%	344	0.7%	209	2.4%	2,985	2.1%
Insurance Carriers & Agents	30	3.6%	403	2.9%	107	3.3%	1,017	2.0%	273	3.1%	2,195	1.5%
Real Estate, Holding, Other Investment Offices	31	3.7%	250	1.8%	140	4.3%	1,035	2.0%	410	4.7%	3,492	2.5%
Services Summary	413	48.9%	6,968	49.3%	1,404	43.3%	18,896	37.3%	3,717	42.6%	64,427	45.2%
Hotels & Lodging	5	0.6%	155	1.1%	14	0.4%	259	0.5%	32	0.4%	598	0.4%
Automotive Services	21	2.5%	160	1.1%	63	1.9%	425	0.8%	190	2.2%	1,384	1.0%
Movies & Amusements	16	1.9%	159	1.1%	82	2.5%	1,010	2.0%	231	2.6%	2,935	2.1%
Health Services	132	15.6%	1,246	8.8%	304	9.4%	3,616	7.1%	867	9.9%	22,404	15.7%
Legal Services	31	3.7%	185	1.3%	85	2.6%	498	1.0%	220	2.5%	1,294	0.9%
Education Institutions & Libraries	19	2.2%	1,787	12.6%	69	2.1%	3,862	7.6%	170	1.9%	8,851	6.2%
Other Services	189	22.4%	3,277	23.2%	787	24.3%	9,226	18.2%	2,007	23.0%	26,961	18.9%
Government	18	2.1%	489	3.5%	65	2.0%	1,148	2.3%	150	1.7%	2,909	2.0%
Unclassified Establishments	28	3.3%	41	0.3%	157	4.8%	432	0.9%	414	4.7%	830	0.6%
Totals	845	100.0%	14,130	100.0%	3,241	100.0%	50,685	100.0%	8,729	100.0%	142,452	100.0%

Source: Copyright 2023 Data Axle, Inc. All rights reserved. Esri Total Residential Population forecasts for 2023.

Date Note: Data on the Business Summary report is calculated using Esri's Data allocation method which uses census block groups to allocate business summary data to custom areas.



Business Summary

Kirkwood Crossing 1,3,5
 1259 S Kirkwood Rd, Saint Louis, Missouri, 63122
 Rings: 1, 3, 5 mile radii

Prepared by Esri
 Latitude: 38.56179
 Longitude: -90.40695

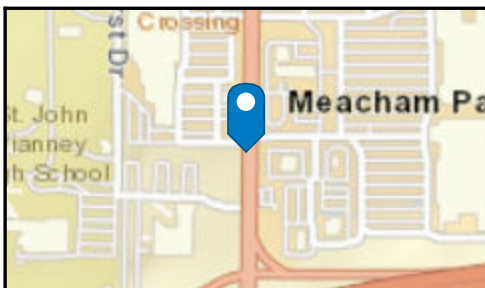
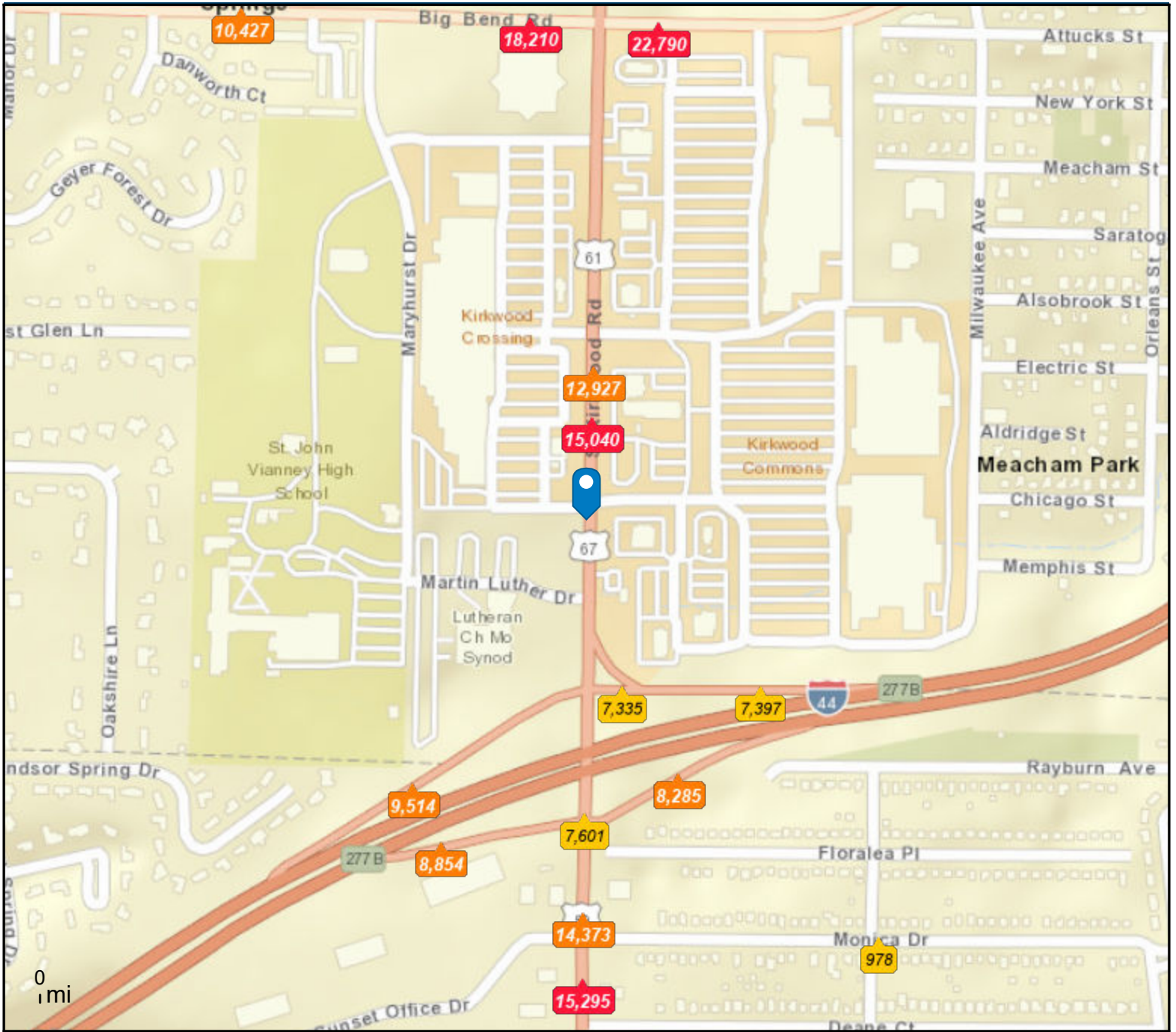
by NAICS Codes	Businesses		Employees		Businesses		Employees		Businesses		Employees	
	Number	Percent	Number	Percent	Number	Percent	Number	Percent	Number	Percent	Number	Percent
Agriculture, Forestry, Fishing & Hunting	2	0.2%	70	0.5%	4	0.1%	91	0.2%	11	0.1%	128	0.1%
Mining	0	0.0%	0	0.0%	2	0.1%	24	0.0%	5	0.1%	46	0.0%
Utilities	0	0.0%	1	0.0%	6	0.2%	210	0.4%	7	0.1%	241	0.2%
Construction	48	5.7%	527	3.7%	250	7.7%	2,883	5.7%	620	7.1%	7,046	4.9%
Manufacturing	14	1.7%	141	1.0%	140	4.3%	3,694	7.3%	365	4.2%	9,873	6.9%
Wholesale Trade	13	1.5%	101	0.7%	132	4.1%	2,114	4.2%	335	3.8%	5,163	3.6%
Retail Trade	101	12.0%	2,441	17.3%	378	11.7%	5,936	11.7%	1,149	13.2%	18,572	13.0%
Motor Vehicle & Parts Dealers	14	1.7%	228	1.6%	40	1.2%	966	1.9%	111	1.3%	2,742	1.9%
Furniture & Home Furnishings Stores	7	0.8%	73	0.5%	27	0.8%	247	0.5%	77	0.9%	842	0.6%
Electronics & Appliance Stores	3	0.4%	10	0.1%	17	0.5%	117	0.2%	52	0.6%	477	0.3%
Building Material & Garden Equipment & Supplies Dealers	7	0.8%	463	3.3%	43	1.3%	929	1.8%	103	1.2%	1,613	1.1%
Food & Beverage Stores	9	1.1%	62	0.4%	37	1.1%	576	1.1%	110	1.3%	2,828	2.0%
Health & Personal Care Stores	14	1.7%	83	0.6%	36	1.1%	266	0.5%	136	1.6%	1,133	0.8%
Gasoline Stations & Fuel Dealers	3	0.4%	19	0.1%	12	0.4%	66	0.1%	39	0.4%	256	0.2%
Clothing, Clothing Accessories, Shoe and Jewelry Stores	9	1.1%	81	0.6%	47	1.5%	512	1.0%	189	2.2%	2,258	1.6%
Sporting Goods, Hobby, Book, & Music Stores	23	2.7%	350	2.5%	88	2.7%	903	1.8%	224	2.6%	2,184	1.5%
General Merchandise Stores	12	1.4%	1,073	7.6%	31	1.0%	1,354	2.7%	109	1.2%	4,240	3.0%
Transportation & Warehousing	5	0.6%	67	0.5%	49	1.5%	6,994	13.8%	110	1.3%	8,927	6.3%
Information	16	1.9%	195	1.4%	68	2.1%	822	1.6%	173	2.0%	2,799	2.0%
Finance & Insurance	85	10.1%	710	5.0%	256	7.9%	1,879	3.7%	674	7.7%	6,966	4.9%
Central Bank/Credit Intermediation & Related Activities	24	2.8%	190	1.3%	61	1.9%	511	1.0%	186	2.1%	1,761	1.2%
Securities & Commodity Contracts	31	3.7%	118	0.8%	87	2.7%	350	0.7%	214	2.5%	3,005	2.1%
Funds, Trusts & Other Financial Vehicles	30	3.6%	403	2.9%	107	3.3%	1,018	2.0%	275	3.2%	2,200	1.5%
Real Estate, Rental & Leasing	31	3.7%	299	2.1%	141	4.4%	1,018	2.0%	430	4.9%	3,478	2.4%
Professional, Scientific & Tech Services	104	12.3%	1,595	11.3%	404	12.5%	4,153	8.2%	1,010	11.6%	11,250	7.9%
Legal Services	35	4.1%	200	1.4%	95	2.9%	571	1.1%	247	2.8%	1,461	1.0%
Management of Companies & Enterprises	3	0.4%	14	0.1%	8	0.2%	47	0.1%	17	0.2%	123	0.1%
Administrative, Support & Waste Management Services	24	2.8%	251	1.8%	132	4.1%	1,226	2.4%	325	3.7%	3,847	2.7%
Educational Services	26	3.1%	1,859	13.2%	90	2.8%	4,086	8.1%	214	2.5%	8,891	6.2%
Health Care & Social Assistance	146	17.3%	1,375	9.7%	364	11.2%	4,518	8.9%	1,042	11.9%	26,195	18.4%
Arts, Entertainment & Recreation	14	1.7%	284	2.0%	73	2.3%	972	1.9%	208	2.4%	2,845	2.0%
Accommodation & Food Services	74	8.8%	2,388	16.9%	188	5.8%	4,765	9.4%	566	6.5%	12,470	8.8%
Accommodation	5	0.6%	155	1.1%	14	0.4%	259	0.5%	32	0.4%	598	0.4%
Food Services & Drinking Places	69	8.2%	2,233	15.8%	174	5.4%	4,505	8.9%	534	6.1%	11,871	8.3%
Other Services (except Public Administration)	94	11.1%	1,281	9.1%	331	10.2%	3,642	7.2%	900	10.3%	9,829	6.9%
Automotive Repair & Maintenance	16	1.9%	91	0.6%	47	1.5%	287	0.6%	148	1.7%	1,140	0.8%
Public Administration	18	2.1%	489	3.5%	68	2.1%	1,179	2.3%	152	1.7%	2,933	2.1%
Unclassified Establishments	28	3.3%	41	0.3%	157	4.8%	432	0.9%	414	4.7%	830	0.6%
Total	845	100.0%	14,130	100.0%	3,241	100.0%	50,685	100.0%	8,729	100.0%	142,452	100.0%

Source: Copyright 2023 Data Axle, Inc. All rights reserved. Esri Total Residential Population forecasts for 2023.

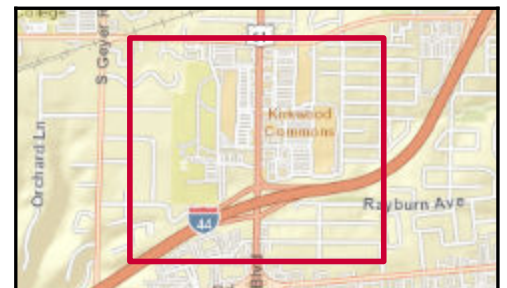
Date Note: Data on the Business Summary report is calculated using Esri's Data allocation method which uses census block groups to allocate business summary data to custom areas.

Kirkwood Crossing 1,3,5
 1259 S Kirkwood Rd, Saint Louis, Missouri, 63122
 Rings: 1, 3, 5 mile radii

Prepared by Esri
 Latitude: 38.56179
 Longitude: -90.40695



- Average Daily Traffic Volume**
- ▲ Up to 6,000 vehicles per day
 - ▲ 6,001 - 15,000
 - ▲ 15,001 - 30,000
 - ▲ 30,001 - 50,000
 - ▲ 50,001 - 100,000
 - ▲ More than 100,000 per day



Source: ©2023 Kalibrate Technologies (Q3 2023).



Traffic Count Profile

Kirkwood Crossing 1,3,5
 1259 S Kirkwood Rd, Saint Louis, Missouri, 63122
 Rings: 1, 3, 5 mile radii

Prepared by Esri
 Latitude: 38.56179
 Longitude: -90.40695

Distance:	Street:	Closest Cross-street:	Year of Count:	Count:
0.07	South Kirkwood Road	Big Bend Rd (0.23 miles N)	2022	15,040
0.10	S Kirkwood Rd	Martin Luther Dr (0.16 miles S)	2019	12,927
0.12	S Kirkwood Rd	I- 44 (0.05 miles SW)	2018	7,538
0.12		I- 44 (0.04 miles S)	2022	7,335
0.17		S Kirkwood Rd (0.11 miles SW)	2022	7,397
0.19	I- 44	S Kirkwood Rd (0.06 miles W)	2018	8,285
0.21		I- 44 (0.03 miles N)	2022	7,601
0.22		S Kirkwood Rd (0.1 miles E)	2022	9,514
0.25		S Kirkwood Rd (0.09 miles NE)	2022	8,854
0.27	South Kirkwood Road	Deane Ct (0.02 miles S)	2022	14,373
0.32	South Kirkwood Road	Monica Dr (0.02 miles S)	2022	15,295
0.34	Big Bend Road	S Kirkwood Rd (0.04 miles W)	2014	22,790
0.34	Big Bend Road	S Kirkwood Rd (0.05 miles E)	2014	18,210
0.35	Monica Drive	Lynstone Pl (0.09 miles E)	2022	978
0.40		Deane Ct (0.05 miles N)	2022	5,619
0.42	Big Bend Road	Maryhurst Dr (0.02 miles E)	2022	10,325
0.42	Big Bend Road	S Harrison Ave (0.0 miles E)	2018	10,427
0.43		Private Rd (0.05 miles E)	2022	3,209
0.43	Watson Rd	S Kirkwood Rd (0.03 miles W)	2019	11,572
0.43	Watson Road	S Lindbergh Blvd (0.07 miles E)	2022	9,057
0.43	Watson Rd	S Kirkwood Rd (0.04 miles W)	2018	5,776
0.44	MO 366	S Kirkwood Rd (0.05 miles W)	2022	9,044
0.44	Orleans St	Memphis St (0.05 miles W)	2019	47,022
0.44		Sunset Hills Plz (0.03 miles SW)	2022	1,505
0.44	Watson Road	S Lindbergh Blvd (0.04 miles W)	2022	8,212
0.44	Watson Rd	Private Rd (0.05 miles E)	2013	1,930
0.45	MO 366	S Lindbergh Blvd (0.05 miles E)	2022	11,372
0.45		S Lindbergh Blvd (0.04 miles W)	2022	741
0.46		S Lindbergh Blvd (0.04 miles NE)	2022	1,750
0.46	Watson Rd	Private Rd (0.07 miles W)	2012	21,287

Data Note:The Traffic Profile displays up to 30 of the closest available traffic counts within the largest radius around your site. The years of the counts in the database range from 2022 to 2000. Esri removes counts that are older than 2000 from the Kalibrate provided database. Traffic counts are identified by the street on which they were recorded, along with the distance and direction to the closest cross-street. Distances displayed as 0.00 miles (due to rounding), are closest to the site. A traffic count is defined as the two-way Average Daily Traffic (ADT) that passes that location.

Source: ©2023 Kalibrate Technologies (Q3 2023).