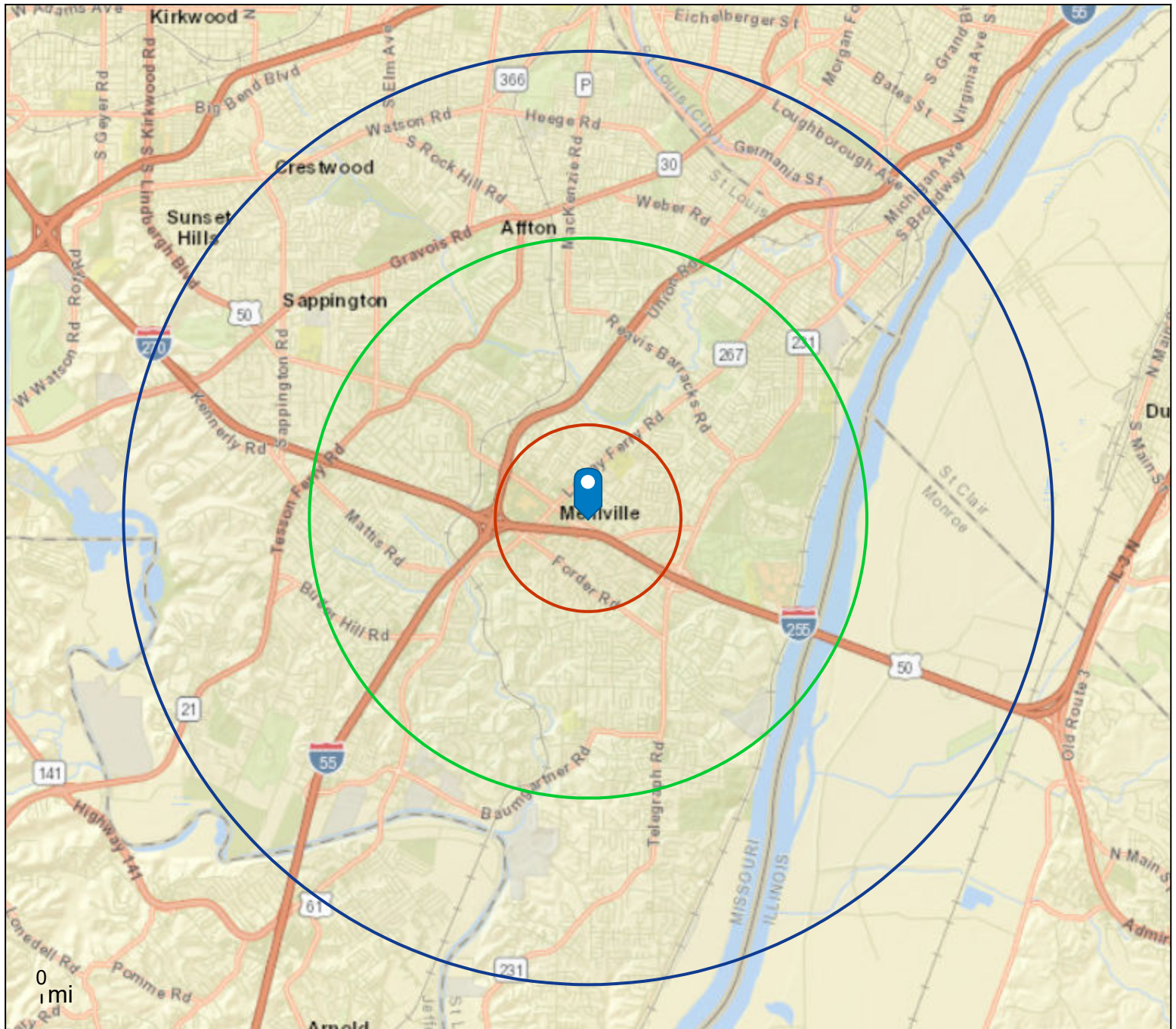


Lemay Shopping Center
 1032 Lemay Manor Ct, Saint Louis, Missouri, 63125
 Rings: 1, 3, 5 mile radii

Prepared by Esri
 Latitude: 38.50397
 Longitude: -90.31938



This site is located in:

City: ---
County: St. Louis County
State: Missouri
ZIP Code: 63125
Census Tract: 29189220504
Census Block Group: 291892205041
CBSA: St. Louis, MO-IL Metropolitan Statistical Area



Demographic and Income Profile

Lemay Shopping Center
1032 Lemay Manor Ct, Saint Louis, Missouri, 63125
Ring: 1 mile radius

Prepared by Esri
Latitude: 38.50397
Longitude: -90.31938

Summary	Census 2010	Census 2020	2023	2028
Population	12,769	13,149	12,659	12,418
Households	5,862	6,073	6,045	5,995
Families	3,364	3,308	3,300	3,257
Average Household Size	2.16	2.14	2.07	2.04
Owner Occupied Housing Units	3,907	3,920	3,950	3,979
Renter Occupied Housing Units	1,955	2,153	2,095	2,016
Median Age	44.0	44.1	46.7	47.4

Trends: 2023-2028 Annual Rate	Area	State	National
Population	-0.38%	0.10%	0.30%
Households	-0.17%	0.28%	0.49%
Families	-0.26%	0.21%	0.44%
Owner HHs	0.15%	0.43%	0.66%
Median Household Income	3.35%	2.94%	2.57%

Households by Income	2023		2028	
	Number	Percent	Number	Percent
<\$15,000	786	13.0%	664	11.1%
\$15,000 - \$24,999	398	6.6%	292	4.9%
\$25,000 - \$34,999	492	8.1%	393	6.6%
\$35,000 - \$49,999	949	15.7%	868	14.5%
\$50,000 - \$74,999	1,043	17.3%	1,008	16.8%
\$75,000 - \$99,999	869	14.4%	909	15.2%
\$100,000 - \$149,999	828	13.7%	969	16.2%
\$150,000 - \$199,999	433	7.2%	603	10.1%
\$200,000+	246	4.1%	289	4.8%

Median Household Income	\$57,371	\$67,651
Average Household Income	\$81,402	\$94,629
Per Capita Income	\$38,802	\$45,592

Population by Age	Census 2010		Census 2020		2023		2028	
	Number	Percent	Number	Percent	Number	Percent	Number	Percent
0 - 4	703	5.5%	638	4.9%	559	4.4%	554	4.5%
5 - 9	582	4.6%	644	4.9%	599	4.7%	570	4.6%
10 - 14	679	5.3%	631	4.8%	693	5.5%	639	5.1%
15 - 19	687	5.4%	602	4.6%	583	4.6%	643	5.2%
20 - 24	867	6.8%	876	6.7%	622	4.9%	579	4.7%
25 - 34	1,644	12.9%	1,847	14.0%	1,458	11.5%	1,208	9.7%
35 - 44	1,362	10.7%	1,452	11.0%	1,612	12.7%	1,654	13.3%
45 - 54	1,823	14.3%	1,422	10.8%	1,308	10.3%	1,349	10.9%
55 - 64	1,664	13.0%	1,865	14.2%	1,706	13.5%	1,485	12.0%
65 - 74	1,243	9.7%	1,599	12.2%	1,749	13.8%	1,738	14.0%
75 - 84	1,057	8.3%	1,045	7.9%	1,201	9.5%	1,381	11.1%
85+	458	3.6%	526	4.0%	567	4.5%	618	5.0%

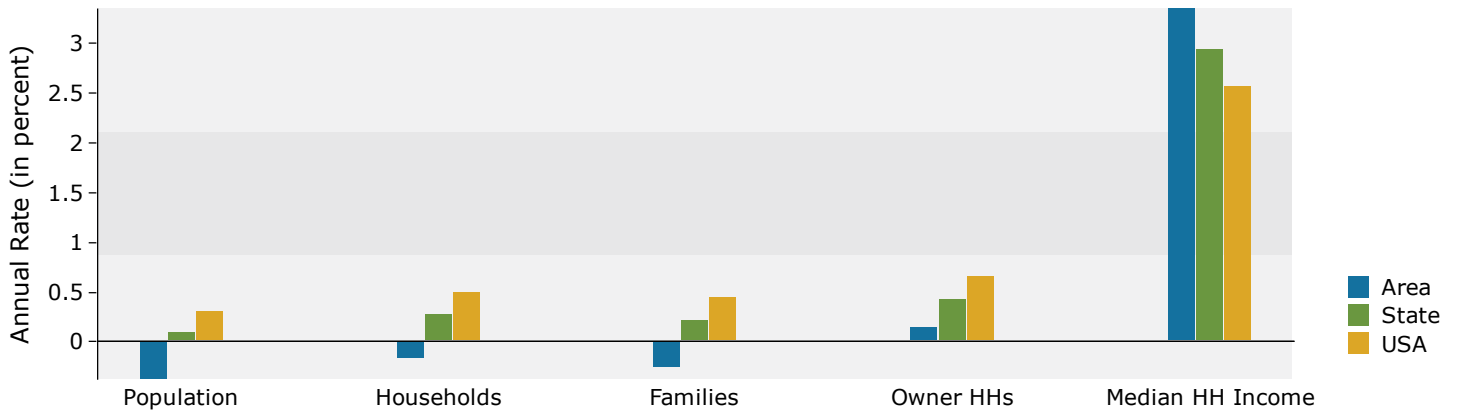
Race and Ethnicity	Census 2010		Census 2020		2023		2028	
	Number	Percent	Number	Percent	Number	Percent	Number	Percent
White Alone	11,717	91.8%	10,989	83.6%	10,491	82.9%	10,081	81.2%
Black Alone	444	3.5%	611	4.6%	600	4.7%	600	4.8%
American Indian Alone	25	0.2%	29	0.2%	29	0.2%	30	0.2%
Asian Alone	279	2.2%	510	3.9%	505	4.0%	541	4.4%
Pacific Islander Alone	2	0.0%	0	0.0%	0	0.0%	0	0.0%
Some Other Race Alone	122	1.0%	185	1.4%	196	1.5%	218	1.8%
Two or More Races	181	1.4%	824	6.3%	838	6.6%	948	7.6%
Hispanic Origin (Any Race)	485	3.8%	480	3.7%	504	4.0%	556	4.5%

Data Note: Income is expressed in current dollars.

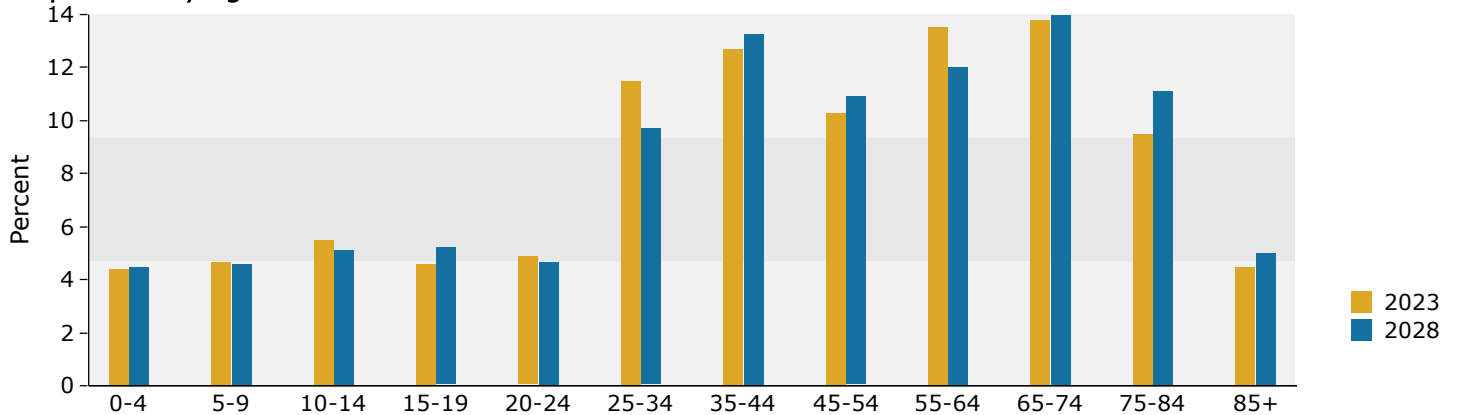
Source: Esri forecasts for 2023 and 2028. U.S. Census Bureau 2020 decennial Census in 2020 geographies.

January 19, 2024

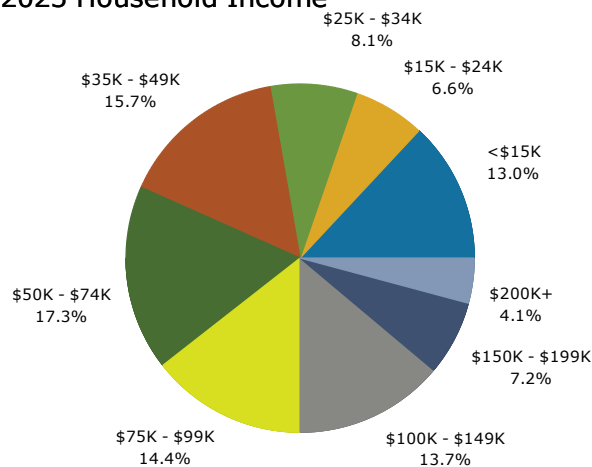
Trends 2023-2028



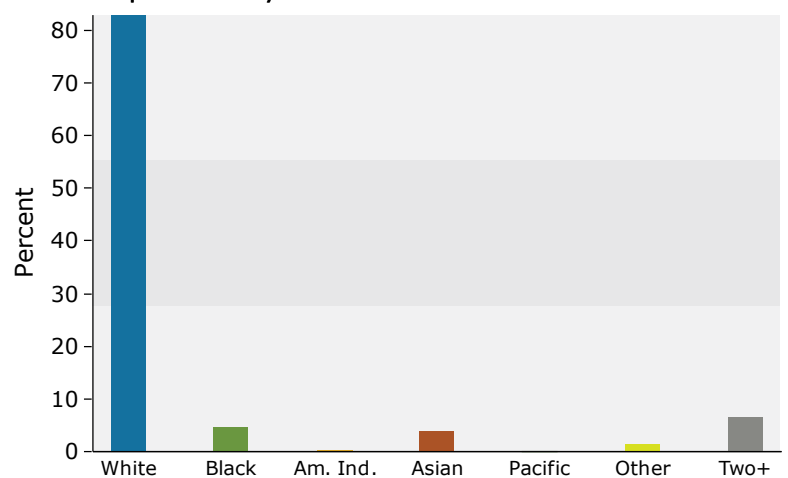
Population by Age



2023 Household Income



2023 Population by Race



2023 Percent Hispanic Origin: 4.0%



Demographic and Income Profile

Lemay Shopping Center
1032 Lemay Manor Ct, Saint Louis, Missouri, 63125
Ring: 3 mile radius

Prepared by Esri
Latitude: 38.50397
Longitude: -90.31938

Summary	Census 2010	Census 2020	2023	2028
Population	88,885	91,489	90,369	88,748
Households	38,598	39,928	39,695	39,375
Families	24,227	24,405	23,874	23,587
Average Household Size	2.28	2.27	2.25	2.23
Owner Occupied Housing Units	29,068	29,081	29,893	29,994
Renter Occupied Housing Units	9,530	10,847	9,802	9,382
Median Age	43.2	43.5	45.0	45.7

Trends: 2023-2028 Annual Rate	Area	State	National
Population	-0.36%	0.10%	0.30%
Households	-0.16%	0.28%	0.49%
Families	-0.24%	0.21%	0.44%
Owner HHs	0.07%	0.43%	0.66%
Median Household Income	3.13%	2.94%	2.57%

Households by Income	2023		2028	
	Number	Percent	Number	Percent
<\$15,000	2,749	6.9%	2,300	5.8%
\$15,000 - \$24,999	2,830	7.1%	2,042	5.2%
\$25,000 - \$34,999	2,833	7.1%	2,259	5.7%
\$35,000 - \$49,999	5,593	14.1%	4,947	12.6%
\$50,000 - \$74,999	7,332	18.5%	6,715	17.1%
\$75,000 - \$99,999	6,220	15.7%	6,029	15.3%
\$100,000 - \$149,999	6,689	16.9%	7,727	19.6%
\$150,000 - \$199,999	3,070	7.7%	4,370	11.1%
\$200,000+	2,379	6.0%	2,985	7.6%

Median Household Income	\$68,262	\$79,617
Average Household Income	\$92,861	\$108,970
Per Capita Income	\$40,591	\$48,098

Population by Age	Census 2010		Census 2020		2023		2028	
	Number	Percent	Number	Percent	Number	Percent	Number	Percent
0 - 4	4,645	5.2%	4,709	5.1%	4,055	4.5%	4,003	4.5%
5 - 9	4,610	5.2%	4,813	5.3%	4,408	4.9%	4,246	4.8%
10 - 14	5,077	5.7%	5,004	5.5%	4,778	5.3%	4,590	5.2%
15 - 19	5,143	5.8%	4,780	5.2%	4,437	4.9%	4,423	5.0%
20 - 24	5,379	6.1%	5,122	5.6%	4,373	4.8%	4,064	4.6%
25 - 34	11,336	12.8%	11,716	12.8%	11,122	12.3%	9,547	10.8%
35 - 44	10,163	11.4%	11,153	12.2%	12,024	13.3%	12,763	14.4%
45 - 54	13,932	15.7%	10,476	11.5%	10,084	11.2%	10,181	11.5%
55 - 64	11,936	13.4%	13,762	15.0%	13,079	14.5%	11,160	12.6%
65 - 74	8,132	9.1%	11,100	12.1%	11,690	12.9%	12,236	13.8%
75 - 84	6,256	7.0%	6,128	6.7%	7,231	8.0%	8,149	9.2%
85+	2,276	2.6%	2,725	3.0%	3,089	3.4%	3,387	3.8%

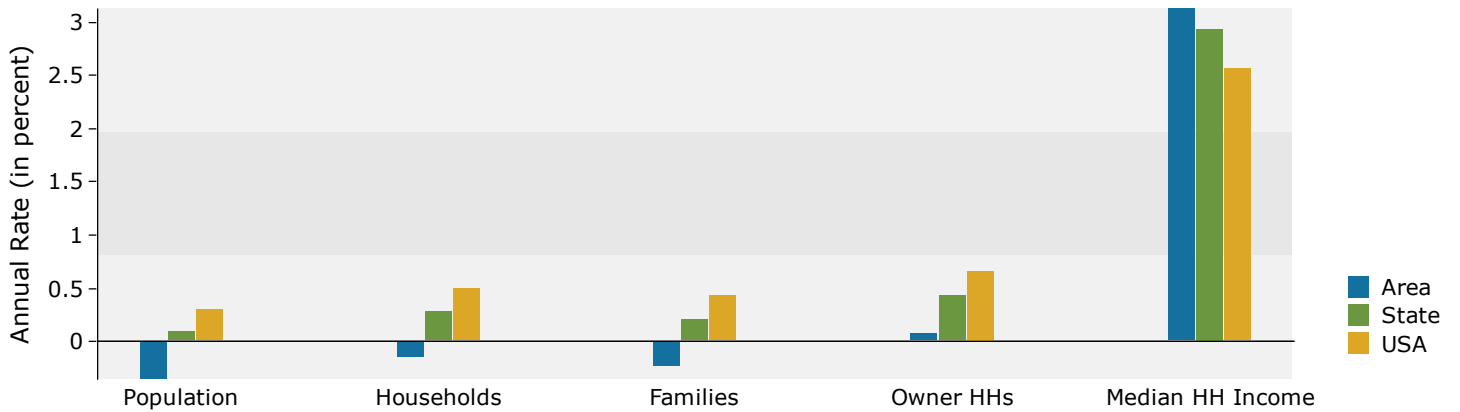
Race and Ethnicity	Census 2010		Census 2020		2023		2028	
	Number	Percent	Number	Percent	Number	Percent	Number	Percent
White Alone	83,491	93.9%	79,032	86.4%	77,545	85.8%	74,780	84.3%
Black Alone	1,705	1.9%	2,980	3.3%	2,964	3.3%	2,982	3.4%
American Indian Alone	130	0.1%	206	0.2%	210	0.2%	219	0.2%
Asian Alone	1,698	1.9%	2,761	3.0%	2,827	3.1%	3,033	3.4%
Pacific Islander Alone	32	0.0%	15	0.0%	17	0.0%	20	0.0%
Some Other Race Alone	552	0.6%	952	1.0%	1,009	1.1%	1,122	1.3%
Two or More Races	1,277	1.4%	5,542	6.1%	5,797	6.4%	6,591	7.4%
Hispanic Origin (Any Race)	1,994	2.2%	2,990	3.3%	3,216	3.6%	3,559	4.0%

Data Note: Income is expressed in current dollars.

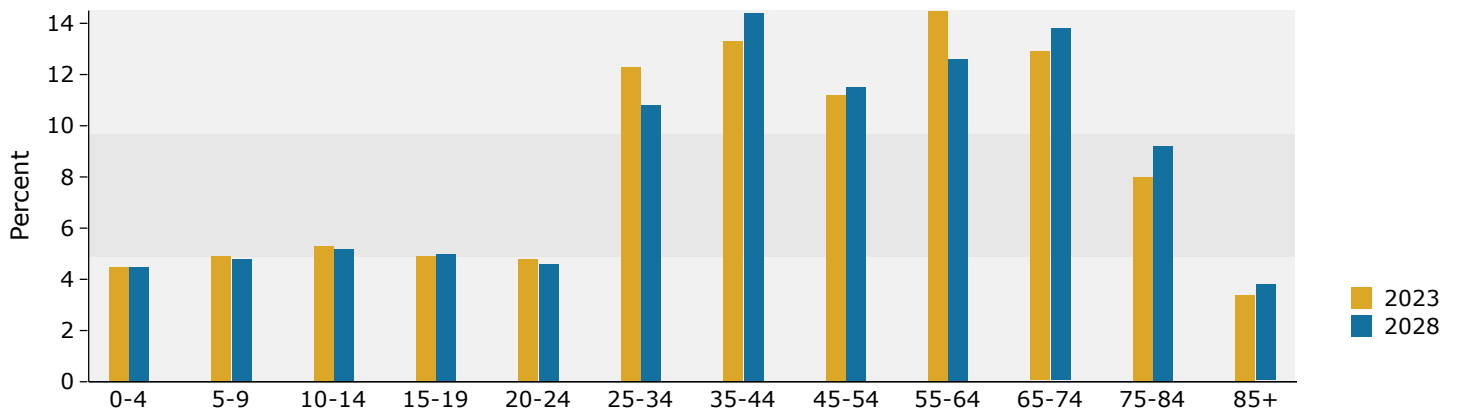
Source: Esri forecasts for 2023 and 2028. U.S. Census Bureau 2020 decennial Census in 2020 geographies.

January 19, 2024

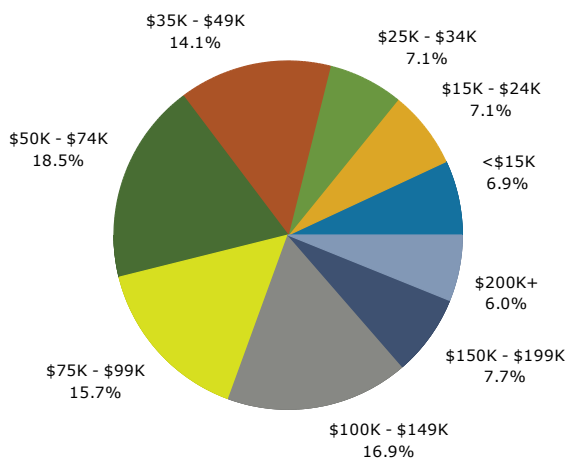
Trends 2023-2028



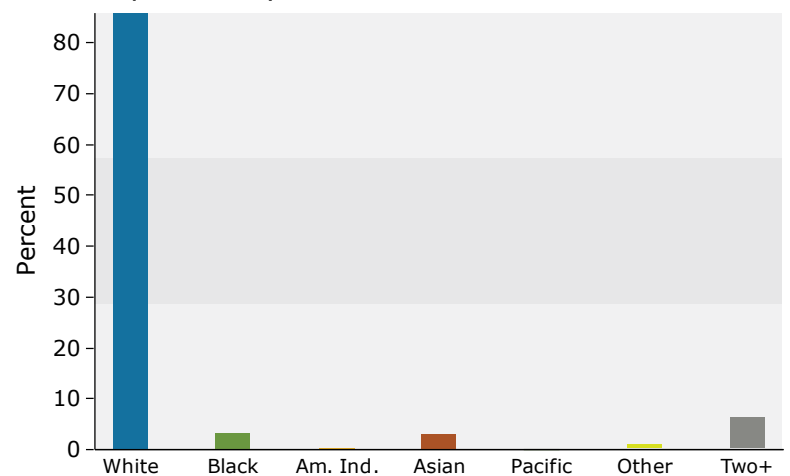
Population by Age



2023 Household Income



2023 Population by Race



2023 Percent Hispanic Origin: 3.6%



Demographic and Income Profile

Lemay Shopping Center
1032 Lemay Manor Ct, Saint Louis, Missouri, 63125
Ring: 5 mile radius

Prepared by Esri
Latitude: 38.50397
Longitude: -90.31938

Summary	Census 2010	Census 2020	2023	2028
Population	187,965	191,772	189,427	186,054
Households	81,027	83,011	82,442	81,778
Families	50,310	50,259	49,236	48,663
Average Household Size	2.30	2.29	2.27	2.25
Owner Occupied Housing Units	60,502	60,210	61,135	61,361
Renter Occupied Housing Units	20,526	22,801	21,307	20,417
Median Age	42.9	43.3	44.8	45.5

Trends: 2023-2028 Annual Rate	Area	State	National
Population	-0.36%	0.10%	0.30%
Households	-0.16%	0.28%	0.49%
Families	-0.23%	0.21%	0.44%
Owner HHs	0.07%	0.43%	0.66%
Median Household Income	2.96%	2.94%	2.57%

Households by Income	2023		2028	
	Number	Percent	Number	Percent
<\$15,000	6,239	7.6%	5,235	6.4%
\$15,000 - \$24,999	5,799	7.0%	4,247	5.2%
\$25,000 - \$34,999	5,630	6.8%	4,542	5.6%
\$35,000 - \$49,999	11,050	13.4%	9,697	11.9%
\$50,000 - \$74,999	14,462	17.5%	13,283	16.2%
\$75,000 - \$99,999	12,336	15.0%	12,080	14.8%
\$100,000 - \$149,999	14,122	17.1%	16,063	19.6%
\$150,000 - \$199,999	6,289	7.6%	8,650	10.6%
\$200,000+	6,515	7.9%	7,981	9.8%

Median Household Income	\$70,424	\$81,494
Average Household Income	\$98,556	\$115,150
Per Capita Income	\$43,054	\$50,812

Population by Age	Census 2010		Census 2020		2023		2028	
	Number	Percent	Number	Percent	Number	Percent	Number	Percent
0 - 4	10,029	5.3%	9,678	5.0%	8,641	4.6%	8,523	4.6%
5 - 9	9,912	5.3%	10,368	5.4%	9,406	5.0%	9,048	4.9%
10 - 14	10,754	5.7%	10,707	5.6%	10,143	5.4%	9,737	5.2%
15 - 19	10,954	5.8%	9,952	5.2%	9,375	4.9%	9,234	5.0%
20 - 24	11,200	6.0%	10,390	5.4%	9,344	4.9%	8,715	4.7%
25 - 34	24,154	12.9%	24,651	12.9%	23,656	12.5%	20,699	11.1%
35 - 44	21,891	11.6%	23,930	12.5%	24,698	13.0%	25,990	14.0%
45 - 54	29,771	15.8%	22,063	11.5%	21,540	11.4%	21,526	11.6%
55 - 64	25,018	13.3%	28,772	15.0%	27,800	14.7%	23,610	12.7%
65 - 74	16,081	8.6%	22,808	11.9%	23,942	12.6%	25,327	13.6%
75 - 84	12,737	6.8%	12,453	6.5%	14,323	7.6%	16,519	8.9%
85+	5,466	2.9%	6,000	3.1%	6,560	3.5%	7,126	3.8%

Race and Ethnicity	Census 2010		Census 2020		2023		2028	
	Number	Percent	Number	Percent	Number	Percent	Number	Percent
White Alone	174,689	92.9%	163,473	85.2%	160,336	84.6%	154,687	83.1%
Black Alone	4,810	2.6%	7,430	3.9%	7,395	3.9%	7,331	3.9%
American Indian Alone	353	0.2%	474	0.2%	480	0.3%	502	0.3%
Asian Alone	4,253	2.3%	6,577	3.4%	6,733	3.6%	7,182	3.9%
Pacific Islander Alone	52	0.0%	52	0.0%	54	0.0%	60	0.0%
Some Other Race Alone	1,029	0.5%	2,078	1.1%	2,211	1.2%	2,466	1.3%
Two or More Races	2,780	1.5%	11,688	6.1%	12,217	6.4%	13,826	7.4%
Hispanic Origin (Any Race)	4,210	2.2%	6,458	3.4%	6,949	3.7%	7,683	4.1%

Data Note: Income is expressed in current dollars.

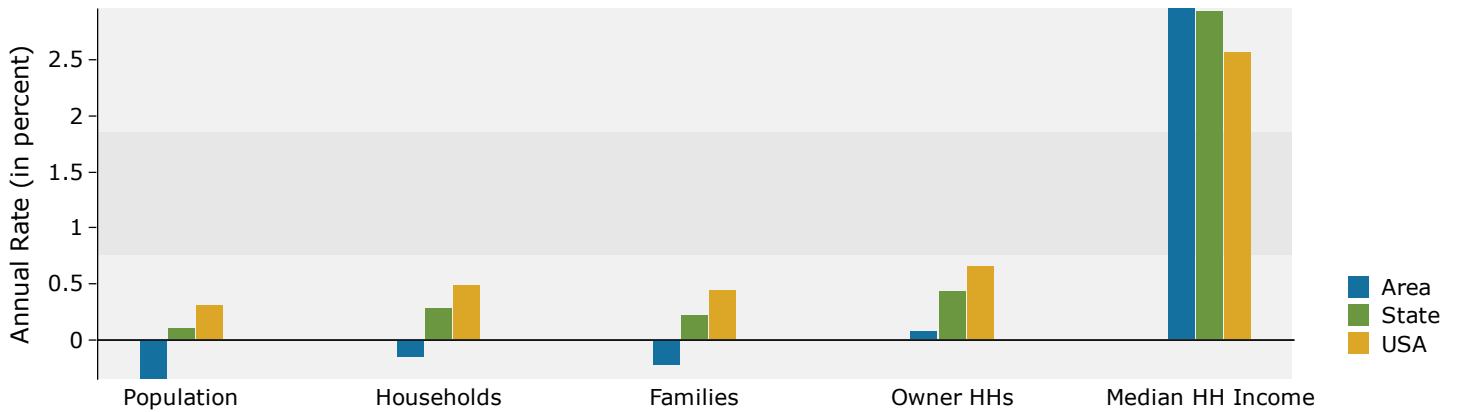
Source: Esri forecasts for 2023 and 2028. U.S. Census Bureau 2020 decennial Census in 2020 geographies.

January 19, 2024

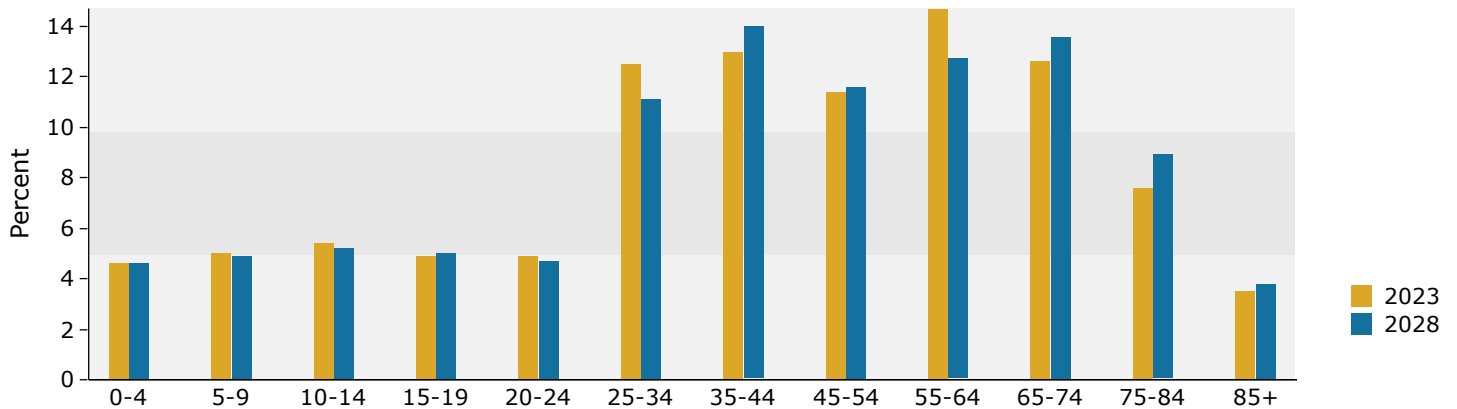
Lemay Shopping Center
1032 Lemay Manor Ct, Saint Louis, Missouri, 63125
Ring: 5 mile radius

Prepared by Esri
Latitude: 38.50397
Longitude: -90.31938

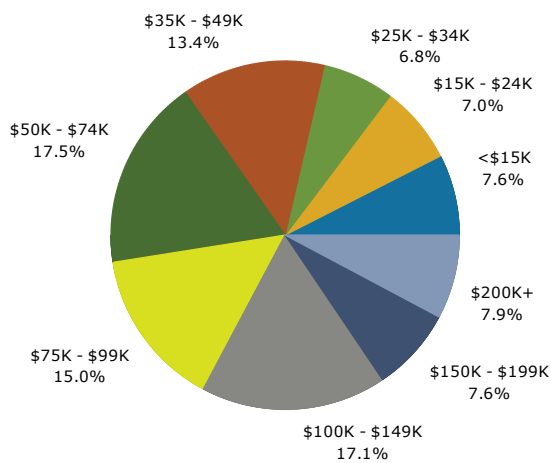
Trends 2023-2028



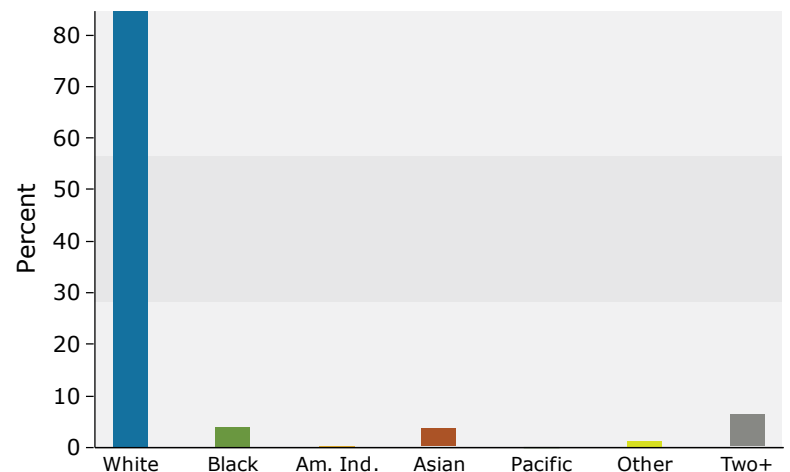
Population by Age



2023 Household Income



2023 Population by Race



2023 Percent Hispanic Origin: 3.7%



Business Summary

Lemay Shopping Center
1032 Lemay Manor Ct, Saint Louis, Missouri, 63125
Rings: 1, 3, 5 mile radii

Prepared by Esri
Latitude: 38.50397
Longitude: -90.31938

Data for all businesses in area				1 mile		3 miles				5 miles			
Total Businesses:				430		2,331				4,805			
Total Employees:				5,954		31,190				68,067			
Total Residential Population:				12,659		90,369				189,427			
Employee/Residential Population Ratio (per 100 Residents)				47		35				36			
by SIC Codes	Businesses		Employees		Businesses		Employees		Businesses		Employees		
	Number	Percent	Number	Percent	Number	Percent	Number	Percent	Number	Percent	Number	Percent	
Agriculture & Mining	6	1.4%	88	1.5%	39	1.7%	412	1.3%	96	2.0%	867	1.3%	
Construction	25	5.8%	183	3.1%	159	6.8%	1,460	4.7%	373	7.8%	3,388	5.0%	
Manufacturing	7	1.6%	22	0.4%	72	3.1%	1,333	4.3%	171	3.6%	3,433	5.0%	
Transportation	6	1.4%	19	0.3%	62	2.7%	832	2.7%	117	2.4%	1,540	2.3%	
Communication	9	2.1%	42	0.7%	17	0.7%	80	0.3%	31	0.6%	180	0.3%	
Utility	0	0.0%	0	0.0%	4	0.2%	34	0.1%	12	0.2%	105	0.2%	
Wholesale Trade	7	1.6%	22	0.4%	74	3.2%	797	2.6%	157	3.3%	2,651	3.9%	
Retail Trade Summary	168	39.1%	3,256	54.7%	609	26.1%	11,618	37.2%	1,092	22.7%	18,100	26.6%	
Home Improvement	5	1.2%	214	3.6%	26	1.1%	405	1.3%	57	1.2%	816	1.2%	
General Merchandise Stores	7	1.6%	784	13.2%	23	1.0%	1,740	5.6%	41	0.9%	2,079	3.1%	
Food Stores	10	2.3%	205	3.4%	60	2.6%	1,310	4.2%	108	2.2%	2,349	3.5%	
Auto Dealers & Gas Stations	16	3.7%	379	6.4%	75	3.2%	1,790	5.7%	123	2.6%	2,191	3.2%	
Apparel & Accessory Stores	31	7.2%	338	5.7%	50	2.1%	503	1.6%	63	1.3%	556	0.8%	
Furniture & Home Furnishings	15	3.5%	103	1.7%	42	1.8%	305	1.0%	67	1.4%	439	0.6%	
Eating & Drinking Places	39	9.1%	822	13.8%	184	7.9%	3,977	12.8%	351	7.3%	6,995	10.3%	
Miscellaneous Retail	45	10.5%	411	6.9%	149	6.4%	1,589	5.1%	281	5.8%	2,676	3.9%	
Finance, Insurance, Real Estate Summary	45	10.5%	268	4.5%	300	12.9%	2,379	7.6%	575	12.0%	4,219	6.2%	
Banks, Savings & Lending Institutions	11	2.6%	100	1.7%	63	2.7%	757	2.4%	120	2.5%	1,132	1.7%	
Securities Brokers	7	1.6%	42	0.7%	42	1.8%	183	0.6%	81	1.7%	305	0.4%	
Insurance Carriers & Agents	11	2.6%	47	0.8%	78	3.3%	391	1.3%	150	3.1%	821	1.2%	
Real Estate, Holding, Other Investment Offices	16	3.7%	78	1.3%	118	5.1%	1,049	3.4%	224	4.7%	1,960	2.9%	
Services Summary	137	31.9%	1,837	30.9%	872	37.4%	11,531	37.0%	1,923	40.0%	32,163	47.3%	
Hotels & Lodging	2	0.5%	67	1.1%	6	0.3%	151	0.5%	13	0.3%	245	0.4%	
Automotive Services	11	2.6%	94	1.6%	90	3.9%	681	2.2%	177	3.7%	1,077	1.6%	
Movies & Amusements	6	1.4%	34	0.6%	47	2.0%	1,234	4.0%	104	2.2%	2,196	3.2%	
Health Services	36	8.4%	341	5.7%	178	7.6%	2,469	7.9%	441	9.2%	13,513	19.9%	
Legal Services	7	1.6%	31	0.5%	35	1.5%	185	0.6%	65	1.4%	314	0.5%	
Education Institutions & Libraries	8	1.9%	395	6.6%	37	1.6%	1,914	6.1%	85	1.8%	4,211	6.2%	
Other Services	67	15.6%	875	14.7%	479	20.5%	4,898	15.7%	1,038	21.6%	10,606	15.6%	
Government	9	2.1%	189	3.2%	33	1.4%	593	1.9%	64	1.3%	1,053	1.5%	
Unclassified Establishments	12	2.8%	27	0.5%	91	3.9%	122	0.4%	194	4.0%	368	0.5%	
Totals	430	100.0%	5,954	100.0%	2,331	100.0%	31,190	100.0%	4,805	100.0%	68,067	100.0%	

Source: Copyright 2023 Data Axle, Inc. All rights reserved. Esri Total Residential Population forecasts for 2023.

Date Note: Data on the Business Summary report is calculated using **Esri's Data allocation method** which uses census block groups to allocate business summary data to custom areas.

January 19, 2024



Business Summary

Lemay Shopping Center
1032 Lemay Manor Ct, Saint Louis, Missouri, 63125
Rings: 1, 3, 5 mile radii

Prepared by Esri
Latitude: 38.50397
Longitude: -90.31938

by NAICS Codes	Businesses		Employees		Businesses		Employees		Businesses		Employees	
	Number	Percent	Number	Percent	Number	Percent	Number	Percent	Number	Percent	Number	Percent
Agriculture, Forestry, Fishing & Hunting	0	0.0%	0	0.0%	1	0.0%	8	0.0%	5	0.1%	18	0.0%
Mining	0	0.0%	0	0.0%	3	0.1%	73	0.2%	4	0.1%	82	0.1%
Utilities	0	0.0%	0	0.0%	0	0.0%	0	0.0%	2	0.0%	19	0.0%
Construction	27	6.3%	190	3.2%	171	7.3%	1,521	4.9%	399	8.3%	3,586	5.3%
Manufacturing	9	2.1%	129	2.2%	77	3.3%	1,462	4.7%	180	3.7%	3,782	5.6%
Wholesale Trade	7	1.6%	22	0.4%	72	3.1%	788	2.5%	154	3.2%	2,619	3.8%
Retail Trade	123	28.6%	2,298	38.6%	407	17.5%	7,439	23.9%	715	14.9%	10,647	15.6%
Motor Vehicle & Parts Dealers	14	3.3%	246	4.1%	57	2.4%	1,527	4.9%	89	1.9%	1,837	2.7%
Furniture & Home Furnishings Stores	9	2.1%	62	1.0%	23	1.0%	212	0.7%	33	0.7%	256	0.4%
Electronics & Appliance Stores	3	0.7%	35	0.6%	11	0.5%	66	0.2%	26	0.5%	173	0.3%
Building Material & Garden Equipment & Supplies Dealers	5	1.2%	214	3.6%	26	1.1%	405	1.3%	57	1.2%	816	1.2%
Food & Beverage Stores	5	1.2%	52	0.9%	54	2.3%	1,130	3.6%	100	2.1%	1,936	2.8%
Health & Personal Care Stores	18	4.2%	189	3.2%	59	2.5%	893	2.9%	103	2.1%	1,394	2.0%
Gasoline Stations & Fuel Dealers	2	0.5%	133	2.2%	18	0.8%	263	0.8%	34	0.7%	354	0.5%
Clothing, Clothing Accessories, Shoe and Jewelry Stores	35	8.1%	364	6.1%	61	2.6%	551	1.8%	78	1.6%	619	0.9%
Sporting Goods, Hobby, Book, & Music Stores	20	4.7%	201	3.4%	66	2.8%	606	1.9%	127	2.6%	1,048	1.5%
General Merchandise Stores	11	2.6%	802	13.5%	33	1.4%	1,786	5.7%	68	1.4%	2,214	3.3%
Transportation & Warehousing	7	1.6%	17	0.3%	51	2.2%	676	2.2%	92	1.9%	1,342	2.0%
Information	11	2.6%	46	0.8%	39	1.7%	300	1.0%	68	1.4%	633	0.9%
Finance & Insurance	32	7.4%	201	3.4%	189	8.1%	1,361	4.4%	361	7.5%	2,308	3.4%
Central Bank/Credit Intermediation & Related Activities	13	3.0%	108	1.8%	65	2.8%	767	2.5%	123	2.6%	1,148	1.7%
Securities & Commodity Contracts	8	1.9%	45	0.8%	46	2.0%	202	0.6%	88	1.8%	339	0.5%
Funds, Trusts & Other Financial Vehicles	11	2.6%	47	0.8%	78	3.3%	391	1.3%	150	3.1%	821	1.2%
Real Estate, Rental & Leasing	18	4.2%	105	1.8%	122	5.2%	1,067	3.4%	228	4.7%	1,909	2.8%
Professional, Scientific & Tech Services	25	5.8%	128	2.1%	186	8.0%	1,266	4.1%	401	8.3%	2,753	4.0%
Legal Services	7	1.6%	31	0.5%	42	1.8%	213	0.7%	81	1.7%	388	0.6%
Management of Companies & Enterprises	0	0.0%	0	0.0%	2	0.1%	8	0.0%	3	0.1%	11	0.0%
Administrative, Support & Waste Management Services	4	0.9%	25	0.4%	87	3.7%	1,032	3.3%	197	4.1%	2,114	3.1%
Educational Services	10	2.3%	403	6.8%	46	2.0%	1,909	6.1%	108	2.2%	4,304	6.3%
Health Care & Social Assistance	44	10.2%	409	6.9%	227	9.7%	3,466	11.1%	546	11.4%	16,295	23.9%
Arts, Entertainment & Recreation	3	0.7%	24	0.4%	40	1.7%	1,172	3.8%	92	1.9%	2,040	3.0%
Accommodation & Food Services	42	9.8%	910	15.3%	196	8.4%	4,182	13.4%	371	7.7%	7,299	10.7%
Accommodation	2	0.5%	67	1.1%	6	0.3%	151	0.5%	13	0.3%	245	0.4%
Food Services & Drinking Places	41	9.5%	843	14.2%	190	8.2%	4,031	12.9%	358	7.5%	7,054	10.4%
Other Services (except Public Administration)	47	10.9%	804	13.5%	290	12.4%	2,718	8.7%	618	12.9%	4,826	7.1%
Automotive Repair & Maintenance	8	1.9%	85	1.4%	71	3.0%	618	2.0%	148	3.1%	989	1.5%
Public Administration	10	2.3%	216	3.6%	34	1.5%	620	2.0%	67	1.4%	1,110	1.6%
Unclassified Establishments	12	2.8%	27	0.5%	91	3.9%	122	0.4%	194	4.0%	368	0.5%
Total	430	100.0%	5,954	100.0%	2,331	100.0%	31,190	100.0%	4,805	100.0%	68,067	100.0%

Source: Copyright 2023 Data Axle, Inc. All rights reserved. Esri Total Residential Population forecasts for 2023.

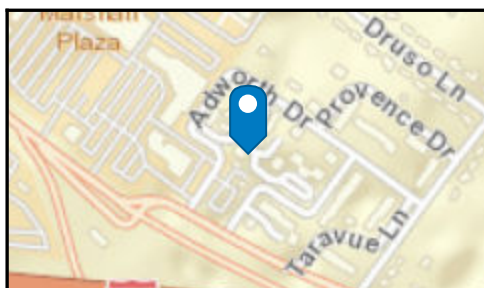
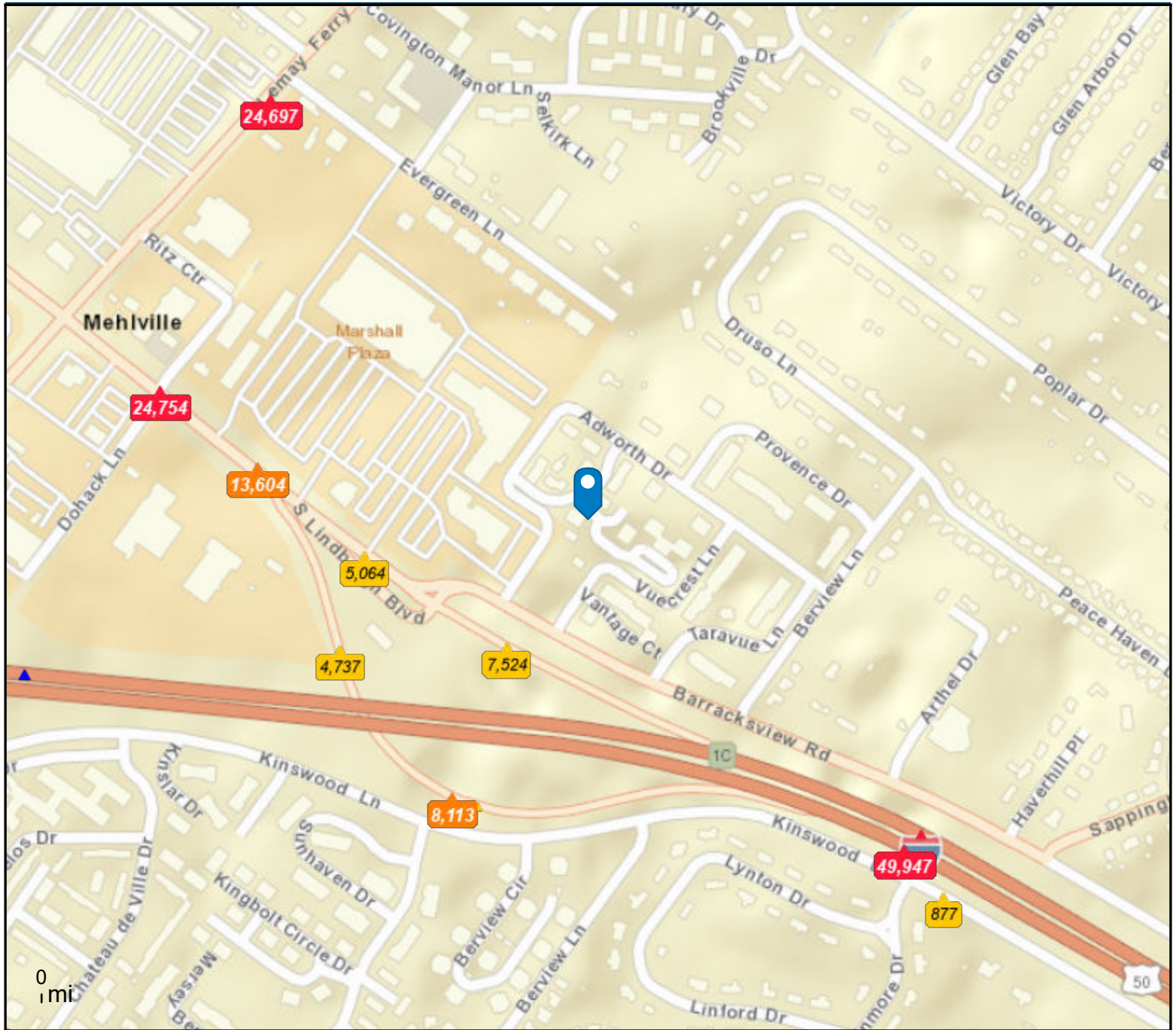
Date Note: Data on the Business Summary report is calculated using **Esri's Data allocation method** which uses census block groups to allocate business summary data to custom areas.

January 19, 2024

Traffic Count Map - Close Up

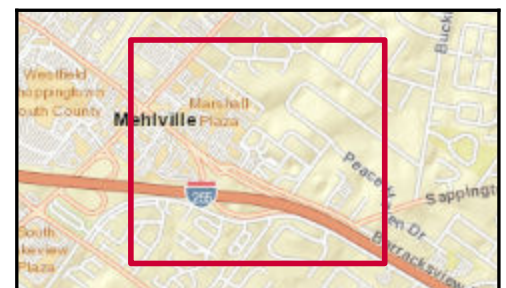
Lemay Shopping Center
1032 Lemay Manor Ct, Saint Louis, Missouri, 63125
Rings: 1, 3, 5 mile radii

Prepared by Esri
Latitude: 38.50397
Longitude: -90.31938



Average Daily Traffic Volume

- ▲ Up to 6,000 vehicles per day
- ▲ 6,001 - 15,000
- ▲ 15,001 - 30,000
- ▲ 30,001 - 50,000
- ▲ 50,001 - 100,000
- ▲ More than 100,000 per day



Source: ©2023 Kalibrate Technologies (Q3 2023).

January 19, 2024



Traffic Count Profile

Lemay Shopping Center
1032 Lemay Manor Ct, Saint Louis, Missouri, 63125
Rings: 1, 3, 5 mile radii

Prepared by Esri
Latitude: 38.50397
Longitude: -90.31938

Distance:	Street:	Closest Cross-street:	Year of Count:	Count:
0.10		Adworth Dr (0.03 miles N)	2022	7,524
0.16	South Lindbergh Boulevard	Barracksview Rd (0.06 miles SE)	2018	5,064
0.19		(0.0 miles)	2013	4,737
0.21	Kingswood Ln	Kingbolt Blvd (0.04 miles W)	2018	5,296
0.21		Kingbolt Blvd (0.04 miles W)	2022	8,113
0.23	South Lindbergh Boulevard	Ave H (0.08 miles NW)	2018	13,604
0.31	S Lindbergh Blvd	Ritz Center (0.01 miles SE)	2019	24,754
0.31		I- 270 (0.08 miles W)	2022	49,947
0.32		Arthel Dr (0.03 miles N)	2022	49,947
0.36	Kinswood Lane	Koch Rd (0.08 miles E)	2022	877
0.36	Hwy 67	Evergreen Ln (0.02 miles NE)	2012	24,697
0.40	I- 255	Lemay Ferry Rd (0.2 miles W)	2012	113,442
0.43	Lemay Ferry Rd	Centerway Dr (0.08 miles SW)	2019	22,965
0.46	Hwy 67	Lemay Village Ln (0.03 miles SW)	2013	24,697
0.47		Centerway Dr (0.09 miles N)	2022	12,007
0.47		Centerway Dr (0.02 miles NW)	2022	5,688
0.47	Lemay Ferry Road	Centerway Dr (0.02 miles SW)	2018	11,770
0.48		Centerway Dr (0.02 miles N)	2022	8,390
0.50	S Lindbergh Blvd	S County Center Way (0.05 miles NW)	2013	29,161
0.52	Lemay Ferry Road	Centerway Dr (0.05 miles SW)	2022	8,964
0.54	Cordes Dr	Private Rd (0.12 miles NE)	2013	1,448
0.55		Casa Brazilia Ct (0.04 miles S)	2022	6,755
0.55	Barracksview Road	Ringer Rd (0.34 miles W)	2022	2,364
0.55	Centerway Dr	S County Center Way (0.01 miles NW)	2018	2,324
0.56	S County Center Way	S Lindbergh Blvd (0.04 miles NE)	2012	7,788
0.56	Forder Road	Brazilia Garden Dr (0.01 miles NW)	2022	11,761
0.58	Sappington Barracks Road	Blossomheath Ln (0.05 miles E)	2015	6,230
0.58	South Lindbergh Boulevard	S County Center Way (0.03 miles SE)	2022	22,554
0.58	S Lindbergh Blvd	Cordes Dr (0.03 miles SE)	2019	18,197
0.58	South Lindbergh Boulevard	Cordes Dr (0.03 miles SE)	2018	18,143

Data Note:The Traffic Profile displays up to 30 of the closest available traffic counts within the largest radius around your site. The years of the counts in the database range from 2022 to 2000. Esri removes counts that are older than 2000 from the Kalibrate provided database. Traffic counts are identified by the street on which they were recorded, along with the distance and direction to the closest cross-street. Distances displayed as 0.00 miles (due to rounding), are closest to the site. A traffic count is defined as the two-way Average Daily Traffic (ADT) that passes that location.

Source: ©2023 Kalibrate Technologies (Q3 2023).