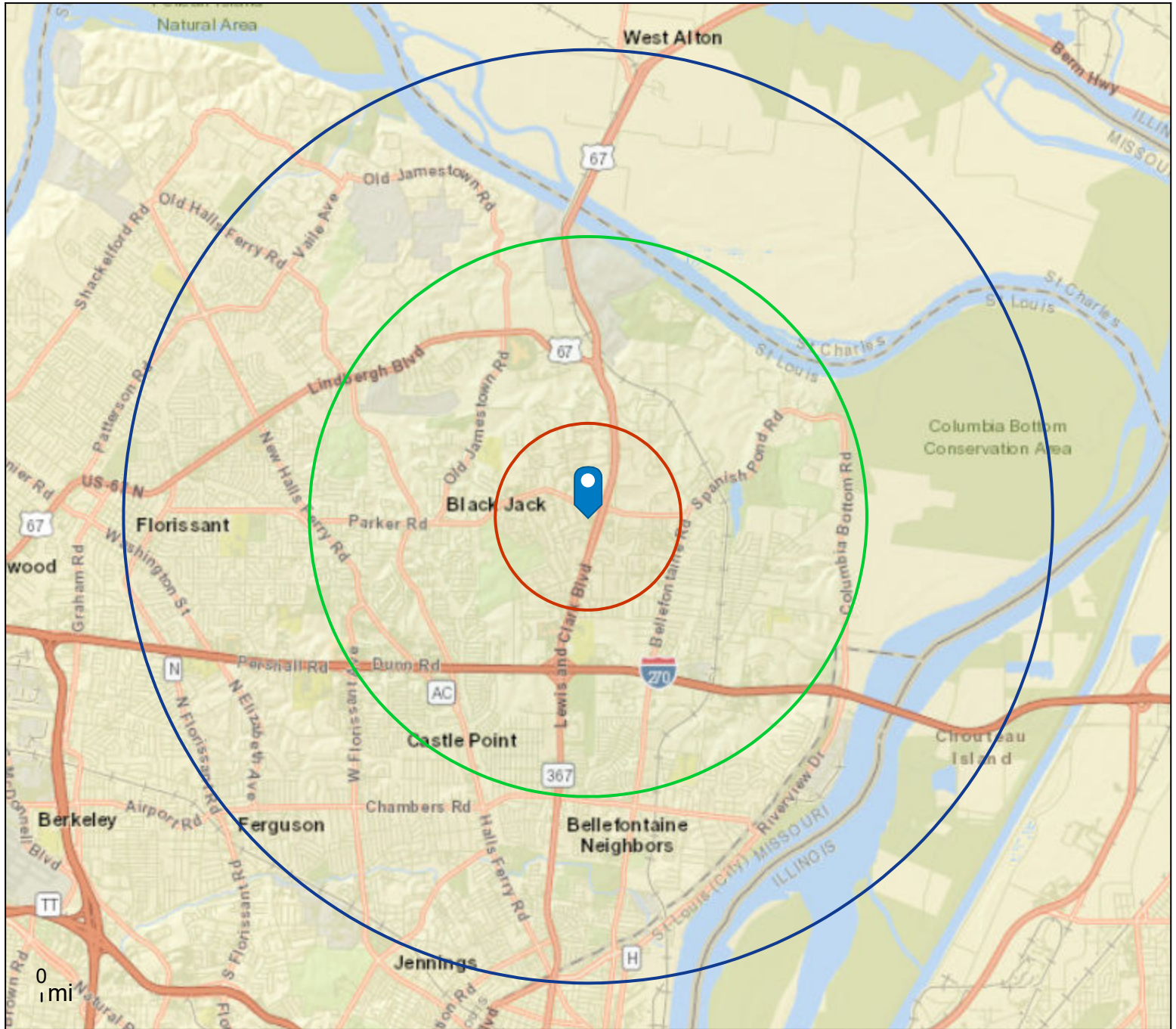


Mayfair Plaza
196 Mayfair Plaza Shopping Ctr, Florissant, Missouri, 63033
Rings: 1, 3, 5 mile radii

Prepared by Esri
Latitude: 38.79430
Longitude: -90.23323



This site is located in:

City: ---
County: St. Louis County
State: Missouri
ZIP Code: 63033
Census Tract: 29189210806
Census Block Group: 291892108061
CBSA: St. Louis, MO-IL Metropolitan Statistical Area



Demographic and Income Profile

Mayfair Plaza
196 Mayfair Plaza Shopping Ctr, Florissant, Missouri, 63033
Ring: 1 mile radius

Prepared by Esri
Latitude: 38.79430
Longitude: -90.23323

Summary	Census 2010	Census 2020	2023	2028
Population	10,747	10,694	10,580	10,382
Households	4,164	4,243	4,213	4,176
Families	2,857	2,765	2,789	2,755
Average Household Size	2.56	2.50	2.49	2.46
Owner Occupied Housing Units	2,523	2,213	2,288	2,304
Renter Occupied Housing Units	1,641	2,030	1,925	1,872
Median Age	34.8	36.2	37.7	38.9

Trends: 2023-2028 Annual Rate	Area	State	National
Population	-0.38%	0.10%	0.30%
Households	-0.18%	0.28%	0.49%
Families	-0.25%	0.21%	0.44%
Owner HHs	0.14%	0.43%	0.66%
Median Household Income	3.30%	2.94%	2.57%

Households by Income	2023		2028	
	Number	Percent	Number	Percent
<\$15,000	402	9.5%	360	8.6%
\$15,000 - \$24,999	444	10.5%	348	8.3%
\$25,000 - \$34,999	327	7.8%	303	7.3%
\$35,000 - \$49,999	805	19.1%	762	18.2%
\$50,000 - \$74,999	574	13.6%	502	12.0%
\$75,000 - \$99,999	629	14.9%	596	14.3%
\$100,000 - \$149,999	545	12.9%	623	14.9%
\$150,000 - \$199,999	320	7.6%	469	11.2%
\$200,000+	168	4.0%	214	5.1%

Median Household Income	\$54,230	\$63,788
Average Household Income	\$80,049	\$93,613
Per Capita Income	\$31,625	\$37,368

Population by Age	Census 2010		Census 2020		2023		2028	
	Number	Percent	Number	Percent	Number	Percent	Number	Percent
0 - 4	779	7.2%	805	7.5%	651	6.2%	648	6.2%
5 - 9	836	7.8%	737	6.9%	717	6.8%	652	6.3%
10 - 14	844	7.9%	703	6.6%	727	6.9%	701	6.8%
15 - 19	866	8.1%	745	7.0%	712	6.7%	652	6.3%
20 - 24	718	6.7%	743	6.9%	660	6.2%	634	6.1%
25 - 34	1,355	12.6%	1,463	13.7%	1,449	13.7%	1,357	13.1%
35 - 44	1,371	12.8%	1,167	10.9%	1,277	12.1%	1,365	13.1%
45 - 54	1,427	13.3%	1,243	11.6%	1,218	11.5%	1,178	11.3%
55 - 64	1,244	11.6%	1,349	12.6%	1,259	11.9%	1,131	10.9%
65 - 74	742	6.9%	1,057	9.9%	1,149	10.9%	1,138	11.0%
75 - 84	394	3.7%	511	4.8%	569	5.4%	703	6.8%
85+	172	1.6%	173	1.6%	193	1.8%	224	2.2%

Race and Ethnicity	Census 2010		Census 2020		2023		2028	
	Number	Percent	Number	Percent	Number	Percent	Number	Percent
White Alone	1,361	12.7%	776	7.3%	760	7.2%	707	6.8%
Black Alone	9,095	84.6%	9,396	87.9%	9,283	87.7%	9,095	87.6%
American Indian Alone	17	0.2%	20	0.2%	20	0.2%	21	0.2%
Asian Alone	41	0.4%	38	0.4%	38	0.4%	40	0.4%
Pacific Islander Alone	3	0.0%	3	0.0%	3	0.0%	3	0.0%
Some Other Race Alone	25	0.2%	115	1.1%	118	1.1%	122	1.2%
Two or More Races	205	1.9%	346	3.2%	358	3.4%	394	3.8%
Hispanic Origin (Any Race)	81	0.8%	142	1.3%	149	1.4%	161	1.6%

Data Note: Income is expressed in current dollars.

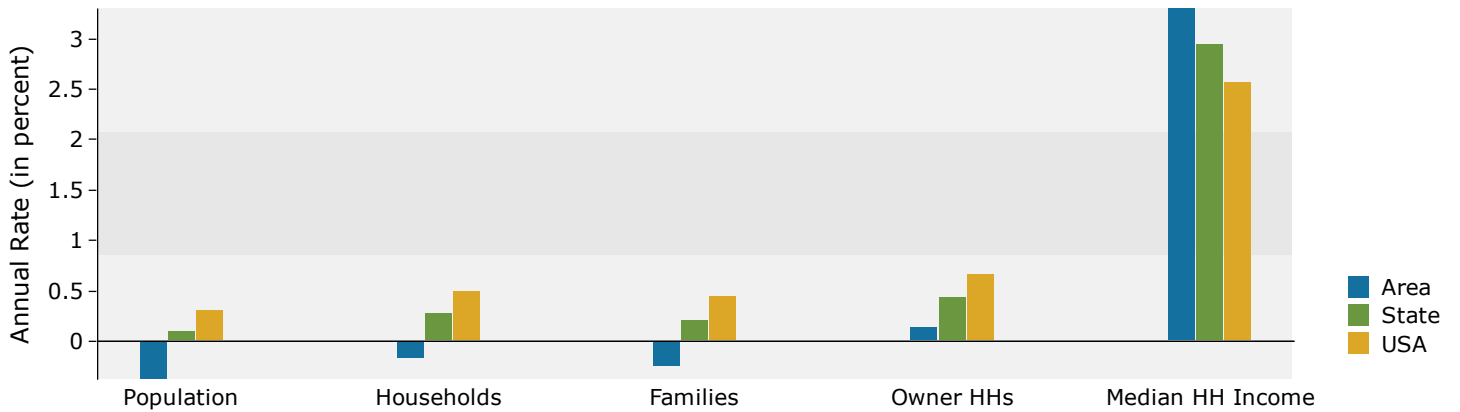
Source: Esri forecasts for 2023 and 2028. U.S. Census Bureau 2020 decennial Census in 2020 geographies.

January 19, 2024

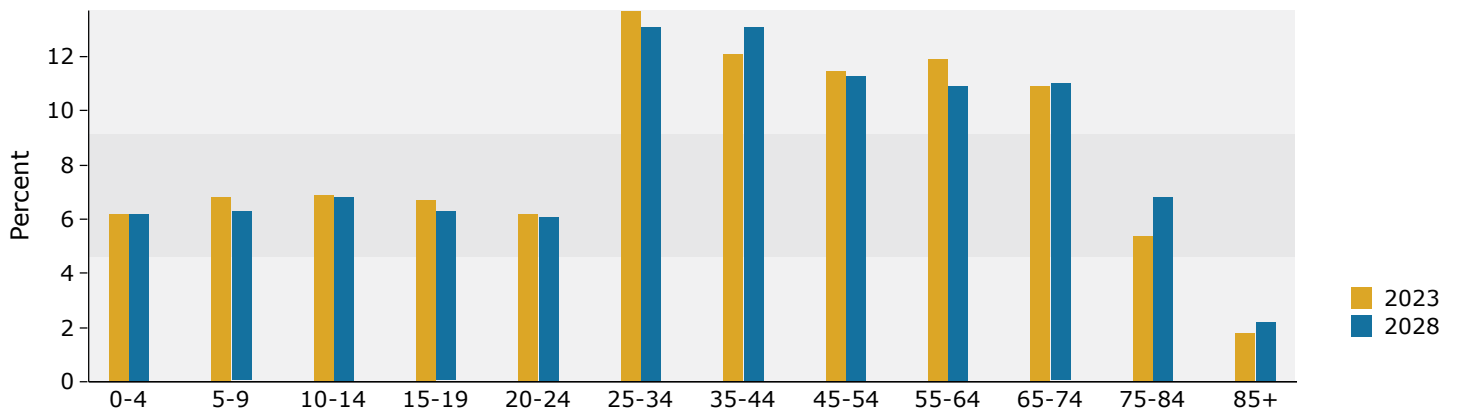
Mayfair Plaza
196 Mayfair Plaza Shopping Ctr, Florissant, Missouri, 63033
Ring: 1 mile radius

Prepared by Esri
Latitude: 38.79430
Longitude: -90.23323

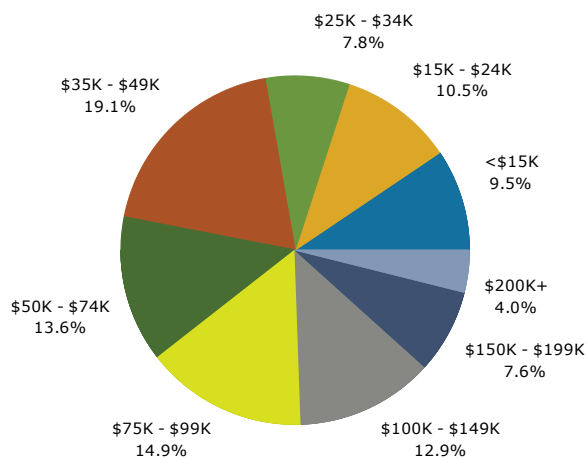
Trends 2023-2028



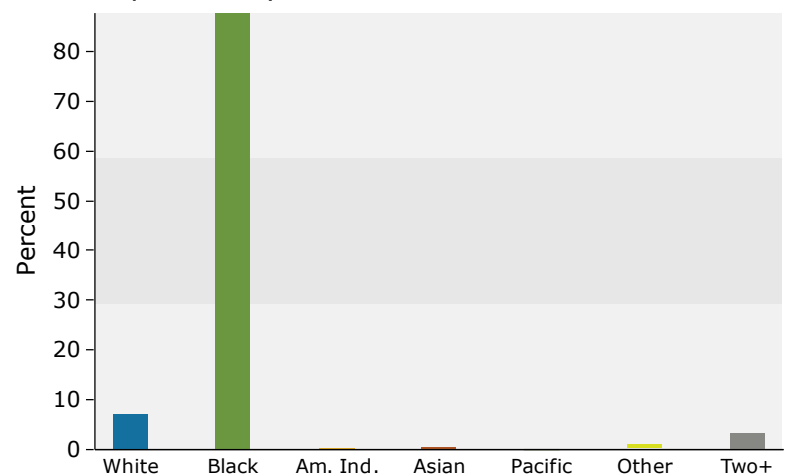
Population by Age



2023 Household Income



2023 Population by Race



2023 Percent Hispanic Origin: 1.4%



Demographic and Income Profile

Mayfair Plaza
196 Mayfair Plaza Shopping Ctr, Florissant, Missouri, 63033
Ring: 3 mile radius

Prepared by Esri
Latitude: 38.79430
Longitude: -90.23323

Summary	Census 2010	Census 2020	2023	2028
Population	61,434	58,730	58,635	57,987
Households	23,360	22,838	22,837	22,809
Families	15,522	14,636	14,632	14,581
Average Household Size	2.57	2.52	2.51	2.49
Owner Occupied Housing Units	15,813	13,114	14,103	14,324
Renter Occupied Housing Units	7,547	9,724	8,734	8,485
Median Age	37.6	39.4	39.9	40.6

Trends: 2023-2028 Annual Rate	Area	State	National
Population	-0.22%	0.10%	0.30%
Households	-0.02%	0.28%	0.49%
Families	-0.07%	0.21%	0.44%
Owner HHs	0.31%	0.43%	0.66%
Median Household Income	2.90%	2.94%	2.57%

Households by Income	2023		2028	
	Number	Percent	Number	Percent
<\$15,000	2,496	10.9%	2,239	9.8%
\$15,000 - \$24,999	2,721	11.9%	2,161	9.5%
\$25,000 - \$34,999	2,223	9.7%	1,851	8.1%
\$35,000 - \$49,999	3,222	14.1%	2,960	13.0%
\$50,000 - \$74,999	4,156	18.2%	3,994	17.5%
\$75,000 - \$99,999	3,093	13.5%	3,230	14.2%
\$100,000 - \$149,999	2,954	12.9%	3,572	15.7%
\$150,000 - \$199,999	1,217	5.3%	1,834	8.0%
\$200,000+	755	3.3%	968	4.2%

Median Household Income	\$53,214	\$61,383
Average Household Income	\$74,238	\$87,412
Per Capita Income	\$29,161	\$34,667

Population by Age	Census 2010		Census 2020		2023		2028	
	Number	Percent	Number	Percent	Number	Percent	Number	Percent
0 - 4	3,966	6.5%	3,675	6.3%	3,275	5.6%	3,285	5.7%
5 - 9	4,144	6.7%	3,922	6.7%	3,647	6.2%	3,421	5.9%
10 - 14	4,598	7.5%	4,116	7.0%	3,839	6.5%	3,806	6.6%
15 - 19	5,215	8.5%	4,069	6.9%	3,834	6.5%	3,720	6.4%
20 - 24	3,899	6.3%	3,707	6.3%	3,420	5.8%	3,112	5.4%
25 - 34	6,879	11.2%	7,149	12.2%	7,842	13.4%	7,277	12.5%
35 - 44	7,704	12.5%	6,350	10.8%	6,777	11.6%	7,438	12.8%
45 - 54	8,769	14.3%	7,037	12.0%	6,893	11.8%	6,594	11.4%
55 - 64	7,733	12.6%	8,123	13.8%	7,543	12.9%	6,851	11.8%
65 - 74	4,434	7.2%	6,465	11.0%	6,807	11.6%	6,764	11.7%
75 - 84	2,746	4.5%	2,958	5.0%	3,366	5.7%	4,200	7.2%
85+	1,347	2.2%	1,160	2.0%	1,393	2.4%	1,520	2.6%

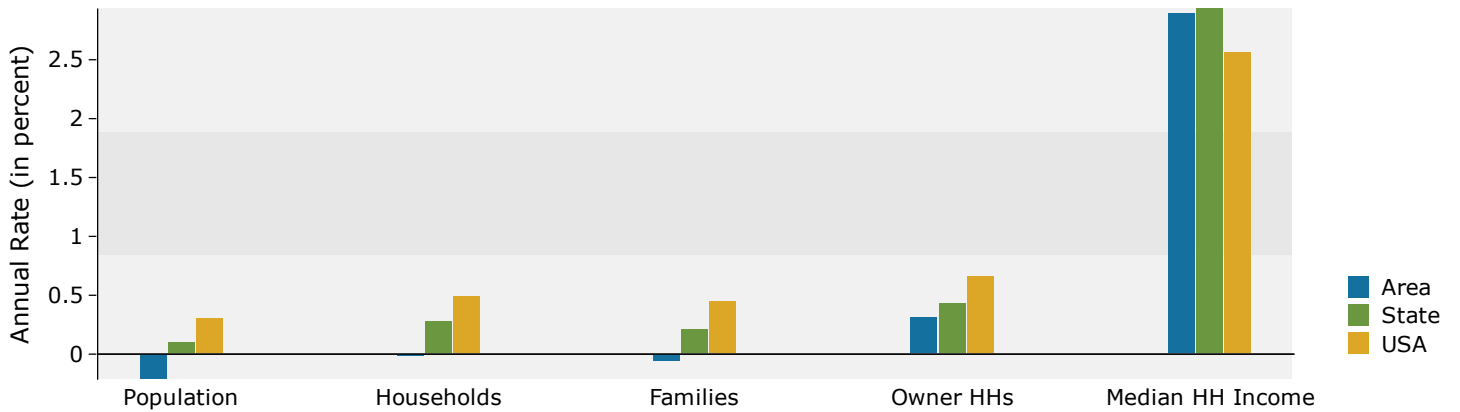
Race and Ethnicity	Census 2010		Census 2020		2023		2028	
	Number	Percent	Number	Percent	Number	Percent	Number	Percent
White Alone	11,612	18.9%	6,545	11.1%	6,419	10.9%	6,030	10.4%
Black Alone	48,163	78.4%	49,252	83.9%	49,156	83.8%	48,622	83.9%
American Indian Alone	108	0.2%	156	0.3%	163	0.3%	166	0.3%
Asian Alone	257	0.4%	264	0.4%	275	0.5%	286	0.5%
Pacific Islander Alone	12	0.0%	19	0.0%	20	0.0%	21	0.0%
Some Other Race Alone	167	0.3%	605	1.0%	625	1.1%	662	1.1%
Two or More Races	1,115	1.8%	1,890	3.2%	1,977	3.4%	2,199	3.8%
Hispanic Origin (Any Race)	551	0.9%	917	1.6%	981	1.7%	1,074	1.9%

Data Note: Income is expressed in current dollars.

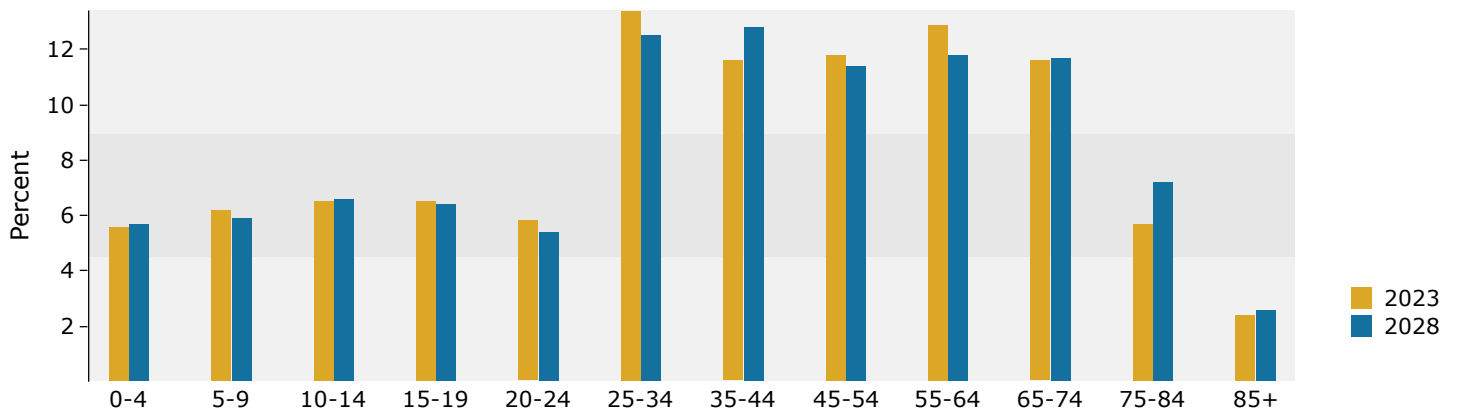
Source: Esri forecasts for 2023 and 2028. U.S. Census Bureau 2020 decennial Census in 2020 geographies.

January 19, 2024

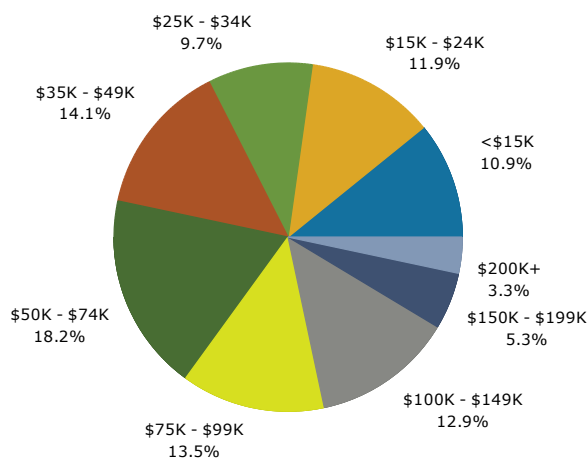
Trends 2023-2028



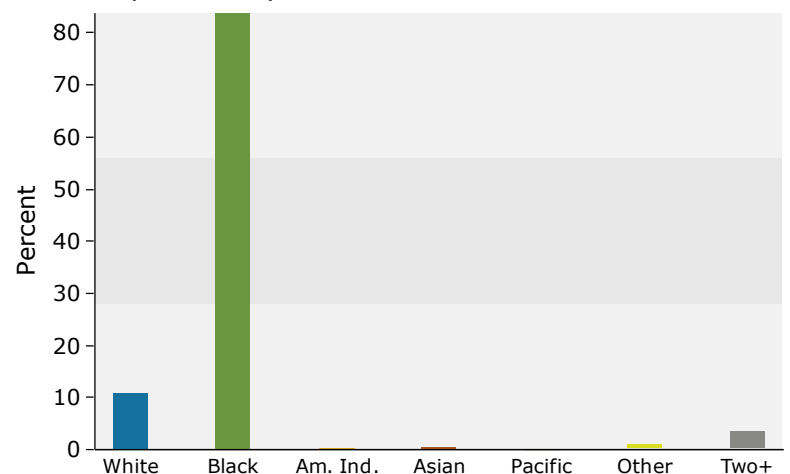
Population by Age



2023 Household Income



2023 Population by Race



2023 Percent Hispanic Origin: 1.7%



Demographic and Income Profile

Mayfair Plaza
196 Mayfair Plaza Shopping Ctr, Florissant, Missouri, 63033
Ring: 5 mile radius

Prepared by Esri
Latitude: 38.79430
Longitude: -90.23323

Summary	Census 2010	Census 2020	2023	2028
Population	150,850	142,674	141,375	139,631
Households	58,617	56,748	56,711	56,605
Families	39,360	36,246	36,734	36,546
Average Household Size	2.54	2.48	2.46	2.44
Owner Occupied Housing Units	39,901	32,551	34,982	35,455
Renter Occupied Housing Units	18,715	24,197	21,729	21,149
Median Age	36.6	38.6	39.3	40.1

Trends: 2023-2028 Annual Rate	Area	State	National
Population	-0.25%	0.10%	0.30%
Households	-0.04%	0.28%	0.49%
Families	-0.10%	0.21%	0.44%
Owner HHs	0.27%	0.43%	0.66%
Median Household Income	2.65%	2.94%	2.57%

Households by Income	2023		2028	
	Number	Percent	Number	Percent
<\$15,000	6,869	12.1%	6,259	11.1%
\$15,000 - \$24,999	6,384	11.3%	5,067	9.0%
\$25,000 - \$34,999	5,464	9.6%	4,603	8.1%
\$35,000 - \$49,999	8,582	15.1%	7,982	14.1%
\$50,000 - \$74,999	10,056	17.7%	9,685	17.1%
\$75,000 - \$99,999	7,742	13.7%	8,103	14.3%
\$100,000 - \$149,999	7,412	13.1%	8,901	15.7%
\$150,000 - \$199,999	2,644	4.7%	4,010	7.1%
\$200,000+	1,559	2.7%	1,995	3.5%

Median Household Income	\$51,805	\$59,057
Average Household Income	\$71,338	\$83,375
Per Capita Income	\$28,621	\$33,800

Population by Age	Census 2010		Census 2020		2023		2028	
	Number	Percent	Number	Percent	Number	Percent	Number	Percent
0 - 4	10,175	6.7%	9,043	6.3%	8,112	5.7%	8,090	5.8%
5 - 9	10,541	7.0%	9,740	6.8%	8,956	6.3%	8,393	6.0%
10 - 14	11,370	7.5%	10,237	7.2%	9,372	6.6%	9,201	6.6%
15 - 19	12,595	8.3%	9,670	6.8%	9,156	6.5%	8,875	6.4%
20 - 24	9,808	6.5%	8,963	6.3%	8,291	5.9%	7,653	5.5%
25 - 34	17,995	11.9%	17,852	12.5%	19,298	13.7%	17,808	12.8%
35 - 44	18,668	12.4%	16,080	11.3%	16,927	12.0%	18,192	13.0%
45 - 54	22,273	14.8%	17,103	12.0%	16,509	11.7%	16,141	11.6%
55 - 64	18,056	12.0%	20,181	14.1%	18,763	13.3%	16,578	11.9%
65 - 74	9,807	6.5%	14,680	10.3%	15,331	10.8%	15,917	11.4%
75 - 84	6,639	4.4%	6,487	4.5%	7,588	5.4%	9,504	6.8%
85+	2,920	1.9%	2,637	1.8%	3,073	2.2%	3,277	2.3%

Race and Ethnicity	Census 2010		Census 2020		2023		2028	
	Number	Percent	Number	Percent	Number	Percent	Number	Percent
White Alone	42,256	28.0%	25,452	17.8%	24,771	17.5%	23,328	16.7%
Black Alone	104,048	69.0%	109,197	76.5%	108,300	76.6%	107,228	76.8%
American Indian Alone	284	0.2%	335	0.2%	349	0.2%	356	0.3%
Asian Alone	822	0.5%	835	0.6%	859	0.6%	889	0.6%
Pacific Islander Alone	25	0.0%	36	0.0%	37	0.0%	40	0.0%
Some Other Race Alone	583	0.4%	1,484	1.0%	1,536	1.1%	1,640	1.2%
Two or More Races	2,833	1.9%	5,335	3.7%	5,523	3.9%	6,151	4.4%
Hispanic Origin (Any Race)	1,718	1.1%	2,482	1.7%	2,626	1.9%	2,860	2.0%

Data Note: Income is expressed in current dollars.

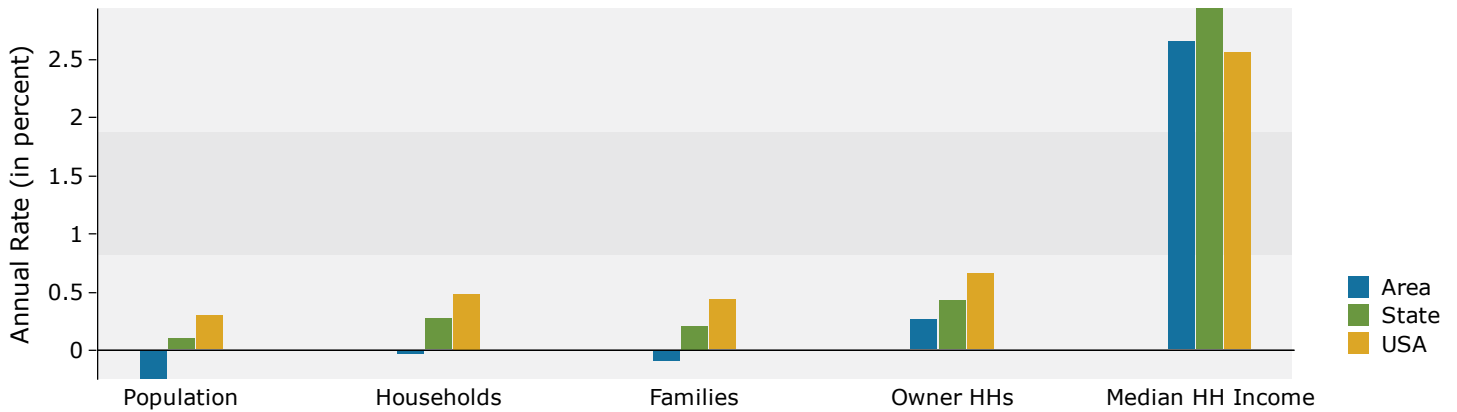
Source: Esri forecasts for 2023 and 2028. U.S. Census Bureau 2020 decennial Census in 2020 geographies.

January 19, 2024

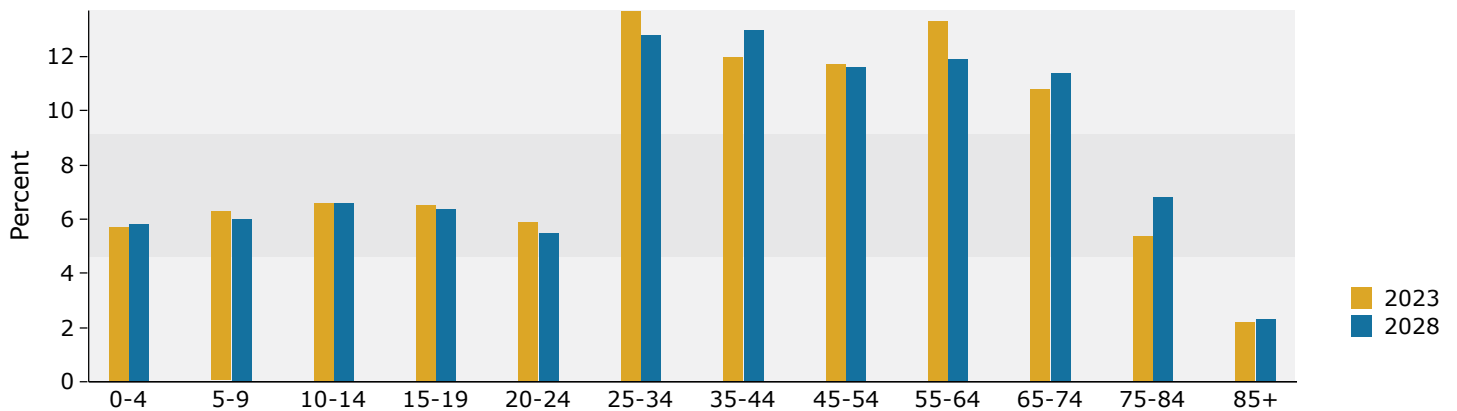
Mayfair Plaza
196 Mayfair Plaza Shopping Ctr, Florissant, Missouri, 63033
Ring: 5 mile radius

Prepared by Esri
Latitude: 38.79430
Longitude: -90.23323

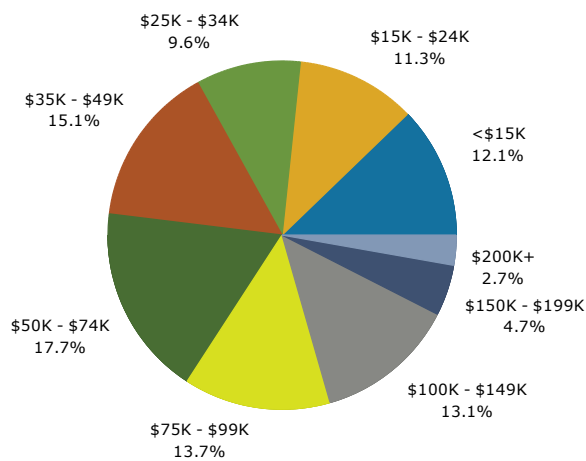
Trends 2023-2028



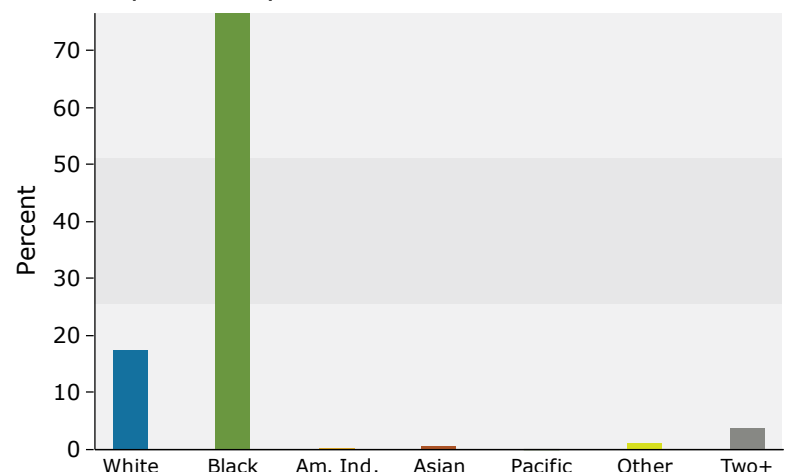
Population by Age



2023 Household Income



2023 Population by Race



2023 Percent Hispanic Origin: 1.9%



Business Summary

Mayfair Plaza
196 Mayfair Plaza Shopping Ctr, Florissant, Missouri, 63033
Rings: 1, 3, 5 mile radii

Prepared by Esri
Latitude: 38.79430
Longitude: -90.23323

Data for all businesses in area			1 mile		3 miles		5 miles					
Total Businesses:			147		983		2,515					
Total Employees:			1,874		14,254		34,039					
Total Residential Population:			10,580		58,635		141,375					
Employee/Residential Population Ratio (per 100 Residents)			18		24		24					
by SIC Codes	Businesses		Employees		Businesses		Employees		Businesses		Employees	
	Number	Percent	Number	Percent	Number	Percent	Number	Percent	Number	Percent	Number	Percent
Agriculture & Mining	1	0.7%	1	0.1%	16	1.6%	112	0.8%	37	1.5%	211	0.6%
Construction	6	4.1%	30	1.6%	42	4.3%	233	1.6%	101	4.0%	579	1.7%
Manufacturing	2	1.4%	9	0.5%	20	2.0%	330	2.3%	42	1.7%	554	1.6%
Transportation	2	1.4%	8	0.4%	26	2.6%	212	1.5%	59	2.3%	1,092	3.2%
Communication	1	0.7%	3	0.2%	9	0.9%	50	0.4%	40	1.6%	224	0.7%
Utility	0	0.0%	0	0.0%	1	0.1%	15	0.1%	2	0.1%	26	0.1%
Wholesale Trade	1	0.7%	4	0.2%	13	1.3%	80	0.6%	42	1.7%	332	1.0%
Retail Trade Summary	26	17.7%	328	17.5%	189	19.2%	2,548	17.9%	590	23.5%	9,229	27.1%
Home Improvement	3	2.0%	8	0.4%	8	0.8%	202	1.4%	22	0.9%	438	1.3%
General Merchandise Stores	4	2.7%	32	1.7%	14	1.4%	263	1.8%	43	1.7%	1,468	4.3%
Food Stores	2	1.4%	19	1.0%	24	2.4%	467	3.3%	67	2.7%	1,641	4.8%
Auto Dealers & Gas Stations	3	2.0%	19	1.0%	29	3.0%	255	1.8%	86	3.4%	888	2.6%
Apparel & Accessory Stores	3	2.0%	14	0.7%	14	1.4%	91	0.6%	34	1.4%	219	0.6%
Furniture & Home Furnishings	0	0.0%	0	0.0%	8	0.8%	33	0.2%	20	0.8%	151	0.4%
Eating & Drinking Places	8	5.4%	174	9.3%	55	5.6%	1,006	7.1%	200	8.0%	3,426	10.1%
Miscellaneous Retail	3	2.0%	61	3.3%	36	3.7%	230	1.6%	118	4.7%	998	2.9%
Finance, Insurance, Real Estate Summary	16	10.9%	89	4.7%	82	8.3%	403	2.8%	236	9.4%	1,112	3.3%
Banks, Savings & Lending Institutions	5	3.4%	26	1.4%	19	1.9%	114	0.8%	70	2.8%	441	1.3%
Securities Brokers	1	0.7%	6	0.3%	5	0.5%	28	0.2%	14	0.6%	68	0.2%
Insurance Carriers & Agents	2	1.4%	4	0.2%	18	1.8%	82	0.6%	47	1.9%	164	0.5%
Real Estate, Holding, Other Investment Offices	7	4.8%	53	2.8%	40	4.1%	179	1.3%	105	4.2%	439	1.3%
Services Summary	82	55.8%	1,209	64.5%	515	52.4%	9,166	64.3%	1,179	46.9%	18,370	54.0%
Hotels & Lodging	0	0.0%	0	0.0%	1	0.1%	4	0.0%	1	0.0%	5	0.0%
Automotive Services	6	4.1%	57	3.0%	33	3.4%	165	1.2%	83	3.3%	434	1.3%
Movies & Amusements	5	3.4%	51	2.7%	20	2.0%	146	1.0%	48	1.9%	435	1.3%
Health Services	16	10.9%	454	24.2%	137	13.9%	4,027	28.3%	256	10.2%	5,440	16.0%
Legal Services	0	0.0%	0	0.0%	4	0.4%	15	0.1%	8	0.3%	25	0.1%
Education Institutions & Libraries	6	4.1%	327	17.4%	40	4.1%	2,005	14.1%	107	4.3%	6,102	17.9%
Other Services	48	32.7%	319	17.0%	279	28.4%	2,804	19.7%	676	26.9%	5,929	17.4%
Government	2	1.4%	138	7.4%	24	2.4%	934	6.6%	67	2.7%	2,010	5.9%
Unclassified Establishments	10	6.8%	54	2.9%	47	4.8%	173	1.2%	122	4.9%	299	0.9%
Totals	147	100.0%	1,874	100.0%	983	100.0%	14,254	100.0%	2,515	100.0%	34,039	100.0%

Source: Copyright 2023 Data Axle, Inc. All rights reserved. Esri Total Residential Population forecasts for 2023.

Date Note: Data on the Business Summary report is calculated using **Esri's Data allocation method** which uses census block groups to allocate business summary data to custom areas.

January 19, 2024



Business Summary

Mayfair Plaza
196 Mayfair Plaza Shopping Ctr, Florissant, Missouri, 63033
Rings: 1, 3, 5 mile radii

Prepared by Esri
Latitude: 38.79430
Longitude: -90.23323

by NAICS Codes	Businesses		Employees		Businesses		Employees		Businesses		Employees	
	Number	Percent	Number	Percent	Number	Percent	Number	Percent	Number	Percent	Number	Percent
Agriculture, Forestry, Fishing & Hunting	0	0.0%	0	0.0%	1	0.1%	2	0.0%	1	0.0%	2	0.0%
Mining	0	0.0%	0	0.0%	0	0.0%	0	0.0%	0	0.0%	0	0.0%
Utilities	0	0.0%	0	0.0%	1	0.1%	15	0.1%	1	0.0%	20	0.1%
Construction	6	4.1%	30	1.6%	44	4.5%	256	1.8%	108	4.3%	666	2.0%
Manufacturing	1	0.7%	8	0.4%	17	1.7%	315	2.2%	39	1.6%	561	1.6%
Wholesale Trade	1	0.7%	4	0.2%	13	1.3%	80	0.6%	42	1.7%	332	1.0%
Retail Trade	18	12.2%	154	8.2%	132	13.4%	1,510	10.6%	377	15.0%	5,681	16.7%
Motor Vehicle & Parts Dealers	2	1.4%	11	0.6%	15	1.5%	179	1.3%	48	1.9%	654	1.9%
Furniture & Home Furnishings Stores	0	0.0%	0	0.0%	4	0.4%	16	0.1%	13	0.5%	129	0.4%
Electronics & Appliance Stores	0	0.0%	0	0.0%	4	0.4%	17	0.1%	6	0.2%	21	0.1%
Building Material & Garden Equipment & Supplies Dealers	3	2.0%	8	0.4%	8	0.8%	201	1.4%	21	0.8%	436	1.3%
Food & Beverage Stores	2	1.4%	19	1.0%	29	3.0%	465	3.3%	73	2.9%	1,588	4.7%
Health & Personal Care Stores	3	2.0%	61	3.3%	15	1.5%	136	1.0%	49	1.9%	581	1.7%
Gasoline Stations & Fuel Dealers	1	0.7%	8	0.4%	14	1.4%	76	0.5%	38	1.5%	234	0.7%
Clothing, Clothing Accessories, Shoe and Jewelry Stores	3	2.0%	14	0.7%	18	1.8%	99	0.7%	44	1.7%	249	0.7%
Sporting Goods, Hobby, Book, & Music Stores	0	0.0%	0	0.0%	8	0.8%	54	0.4%	35	1.4%	302	0.9%
General Merchandise Stores	4	2.7%	32	1.7%	16	1.6%	266	1.9%	51	2.0%	1,488	4.4%
Transportation & Warehousing	2	1.4%	6	0.3%	19	1.9%	145	1.0%	45	1.8%	996	2.9%
Information	1	0.7%	4	0.2%	14	1.4%	75	0.5%	55	2.2%	317	0.9%
Finance & Insurance	9	6.1%	36	1.9%	43	4.4%	230	1.6%	133	5.3%	683	2.0%
Central Bank/Credit Intermediation & Related Activities	5	3.4%	26	1.4%	18	1.8%	112	0.8%	69	2.7%	441	1.3%
Securities & Commodity Contracts	1	0.7%	6	0.3%	7	0.7%	37	0.3%	17	0.7%	78	0.2%
Funds, Trusts & Other Financial Vehicles	2	1.4%	4	0.2%	18	1.8%	82	0.6%	47	1.9%	164	0.5%
Real Estate, Rental & Leasing	11	7.5%	65	3.5%	50	5.1%	207	1.5%	126	5.0%	493	1.4%
Professional, Scientific & Tech Services	6	4.1%	51	2.7%	57	5.8%	307	2.2%	135	5.4%	750	2.2%
Legal Services	0	0.0%	0	0.0%	5	0.5%	18	0.1%	10	0.4%	33	0.1%
Management of Companies & Enterprises	0	0.0%	0	0.0%	1	0.1%	4	0.0%	1	0.0%	4	0.0%
Administrative, Support & Waste Management Services	5	3.4%	25	1.3%	30	3.1%	339	2.4%	68	2.7%	559	1.6%
Educational Services	6	4.1%	327	17.4%	44	4.5%	2,022	14.2%	115	4.6%	6,095	17.9%
Health Care & Social Assistance	29	19.7%	587	31.3%	198	20.1%	4,958	34.8%	379	15.1%	7,805	22.9%
Arts, Entertainment & Recreation	5	3.4%	51	2.7%	22	2.2%	153	1.1%	51	2.0%	453	1.3%
Accommodation & Food Services	8	5.4%	174	9.3%	58	5.9%	1,041	7.3%	207	8.2%	3,510	10.3%
Accommodation	0	0.0%	0	0.0%	1	0.1%	4	0.0%	1	0.0%	5	0.0%
Food Services & Drinking Places	8	5.4%	174	9.3%	57	5.8%	1,037	7.3%	206	8.2%	3,504	10.3%
Other Services (except Public Administration)	27	18.4%	159	8.5%	170	17.3%	1,494	10.5%	445	17.7%	2,812	8.3%
Automotive Repair & Maintenance	2	1.4%	47	2.5%	20	2.0%	121	0.8%	56	2.2%	337	1.0%
Public Administration	2	1.4%	138	7.4%	23	2.3%	926	6.5%	65	2.6%	2,000	5.9%
Unclassified Establishments	10	6.8%	54	2.9%	47	4.8%	173	1.2%	122	4.9%	299	0.9%
Total	147	100.0%	1,874	100.0%	983	100.0%	14,254	100.0%	2,515	100.0%	34,039	100.0%

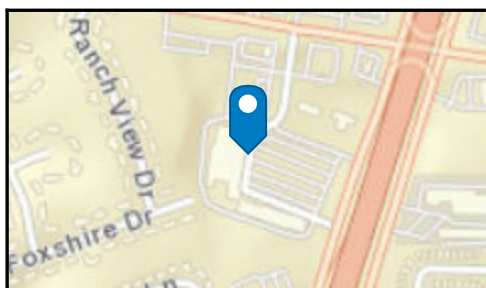
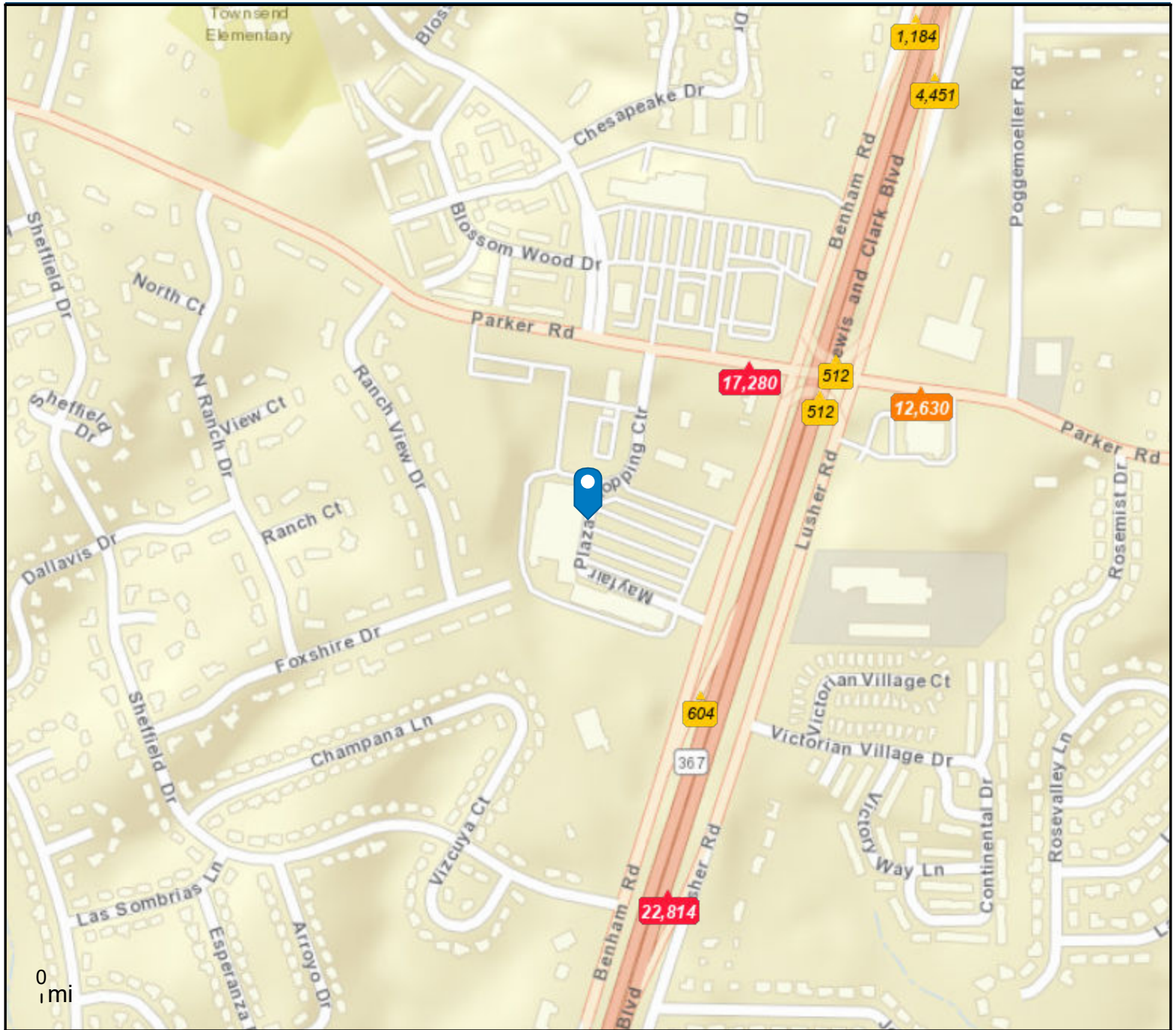
Source: Copyright 2023 Data Axle, Inc. All rights reserved. Esri Total Residential Population forecasts for 2023.

Date Note: Data on the Business Summary report is calculated using **Esri's Data allocation method** which uses census block groups to allocate business summary data to custom areas.

January 19, 2024

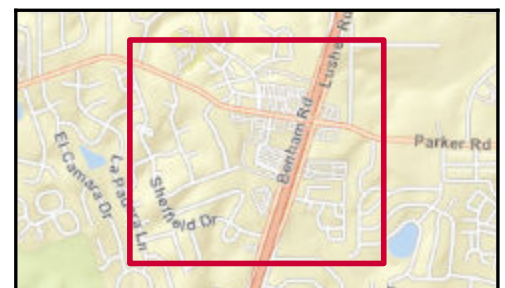
Mayfair Plaza
 196 Mayfair Plaza Shopping Ctr, Florissant, Missouri, 63033
 Rings: 1, 3, 5 mile radii

Prepared by Esri
 Latitude: 38.79430
 Longitude: -90.23323



Average Daily Traffic Volume

- ▲ Up to 6,000 vehicles per day
- ▲ 6,001 - 15,000
- ▲ 15,001 - 30,000
- ▲ 30,001 - 50,000
- ▲ 50,001 - 100,000
- ▲ More than 100,000 per day



Source: ©2023 Kalibrate Technologies (Q3 2023).

January 19, 2024



Traffic Count Profile

Mayfair Plaza
196 Mayfair Plaza Shopping Ctr, Florissant, Missouri, 63033
Rings: 1, 3, 5 mile radii

Prepared by Esri
Latitude: 38.79430
Longitude: -90.23323

Distance:	Street:	Closest Cross-street:	Year of Count:	Count:
0.14		Mayfair Plz Shopping Ctr (0.13 miles N)	2022	604
0.15	Parker Road	Benham Rd (0.03 miles E)	2016	17,280
0.18		Parker Rd (0.02 miles NW)	2022	512
0.20		Parker Rd (0.01 miles S)	2022	512
0.24	Parker Road	Lusher Rd (0.05 miles W)	2016	12,630
0.26	Benham Rd	Sheffield Dr (0.03 miles W)	2019	22,814
0.27		Siesta Ln (0.14 miles SW)	2022	13,653
0.38		Parker Rd (0.16 miles S)	2022	4,451
0.39		Sheffield Dr (0.13 miles N)	2022	7,454
0.41		Nob Hill Dr (0.07 miles E)	2022	1,184
0.47	Benham Road	Parc Charlene Dr (0.07 miles N)	2022	3,628
0.48	Lusher Road	Redman Ave (0.06 miles SW)	2022	10,194
0.59	Lewis N Clark Blvd S	Redman Ave (0.04 miles S)	2012	3,418
0.60	Redman Avenue	Lusher Rd (0.09 miles W)	2016	7,830
0.60	Lewis and Clark Boulevard	Dunn Rd (0.25 miles N)	2022	512
0.60	Parker Road	Pattern Dr (0.1 miles W)	2022	4,112
0.61	Parker Rd	Hall House Dr (0.03 miles W)	2013	9,656
0.66	Benham Road	Parker Rd (0.11 miles S)	2022	1,168
0.67	Redman Ave	Las Ladera Dr (0.06 miles W)	2011	4,510
0.69	Lusher Rd	Norma Ln (0.11 miles N)	2013	900
0.70	Lusher Road	Rochelle Dr (0.05 miles SE)	2022	994
0.72	Redman Avenue	Old Halls Ferry Rd (0.03 miles W)	2022	3,001
0.72	Redman Avenue	Las Ladera Dr (0.03 miles E)	2016	5,590
0.81		Norma Ln (0.04 miles S)	2022	1,563
0.81		Norma Ln (0.02 miles S)	2022	1,556
0.84		Redman Ave (0.21 miles N)	2022	1,199
0.87		Darlington Dr (0.01 miles NE)	2022	1,340
0.97	Lewis and Clark Boulevard	Ramp Lewis N Clark Blvd Ramp N (0.16 miles N)	2022	14,398
0.98	Benham Rd	Candlewick Way (0.02 miles NW)	2019	17,152
1.01	Bellefontaine Road	Rosado Dr (0.02 miles S)	2015	9,840

Data Note:The Traffic Profile displays up to 30 of the closest available traffic counts within the largest radius around your site. The years of the counts in the database range from 2022 to 2000. Esri removes counts that are older than 2000 from the Kalibrate provided database. Traffic counts are identified by the street on which they were recorded, along with the distance and direction to the closest cross-street. Distances displayed as 0.00 miles (due to rounding), are closest to the site. A traffic count is defined as the two-way Average Daily Traffic (ADT) that passes that location.

Source: ©2023 Kalibrate Technologies (Q3 2023).