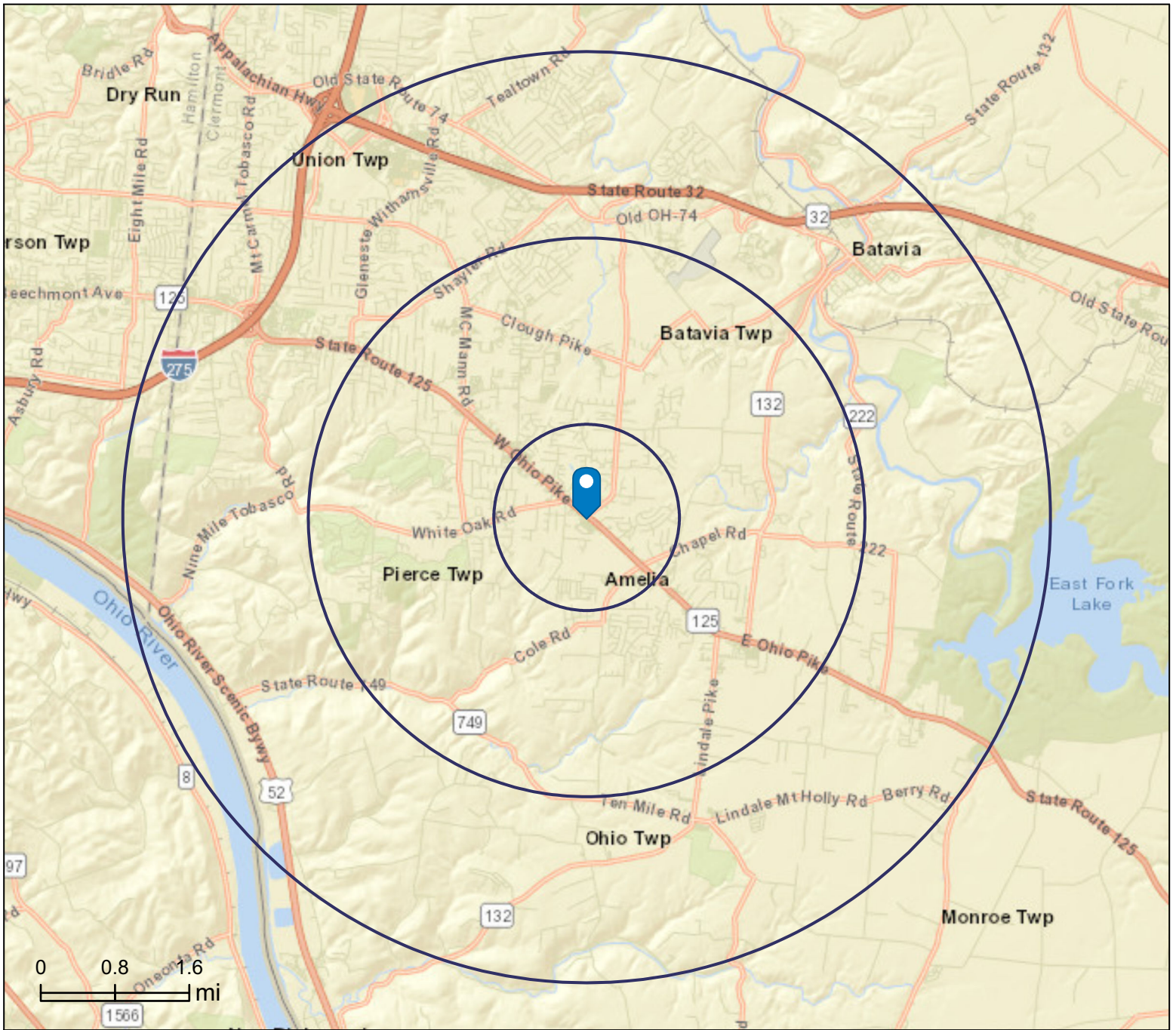


Site Details Map

**Pierce Town Center 1,3,5 mile
W Ohio Pike, Amelia, OH, 45102
Rings: 1, 3, 5 mile radii

Prepared by Esri
Latitude: 39.03773
Longitude: -84.23205



This site is located in:

- City:** ---
- County:** Clermont County
- State:** Ohio
- ZIP Code:** 45102
- Census Tract:** 39025041504
- Census Block Group:** 390250415042
- CBSA:** Cincinnati, OH-KY-IN Metropolitan Statistical Area

Demographic and Income Profile

**Pierce Town Center 1,3,5 mile
W Ohio Pike, Amelia, OH, 45102
Ring: 1 mile radius

Prepared by Esri
Latitude: 39.03773
Longitude: -84.23205

Summary	Census 2010	Census 2020	2024	2029
Population	7,168	7,659	7,806	7,862
Households	2,840	3,133	3,226	3,317
Families	2,000	2,156	2,161	2,203
Average Household Size	2.52	2.44	2.42	2.37
Owner Occupied Housing Units	2,087	2,254	2,363	2,479
Renter Occupied Housing Units	753	879	863	838
Median Age	36.3	39.6	40.4	41.5

Trends: 2024-2029 Annual Rate	Area	State	National
Population	0.14%	0.02%	0.38%
Households	0.56%	0.27%	0.64%
Families	0.39%	0.04%	0.56%
Owner HHs	0.96%	0.55%	0.97%
Median Household Income	3.03%	3.08%	2.95%

Households by Income	2024		2029	
	Number	Percent	Number	Percent
<\$15,000	106	3.3%	93	2.8%
\$15,000 - \$24,999	297	9.2%	224	6.8%
\$25,000 - \$34,999	243	7.5%	222	6.7%
\$35,000 - \$49,999	265	8.2%	262	7.9%
\$50,000 - \$74,999	620	19.2%	579	17.5%
\$75,000 - \$99,999	414	12.8%	390	11.8%
\$100,000 - \$149,999	730	22.6%	793	23.9%
\$150,000 - \$199,999	282	8.7%	408	12.3%
\$200,000+	267	8.3%	348	10.5%

Median Household Income	\$78,869	\$91,551
Average Household Income	\$102,462	\$119,004
Per Capita Income	\$41,136	\$48,803

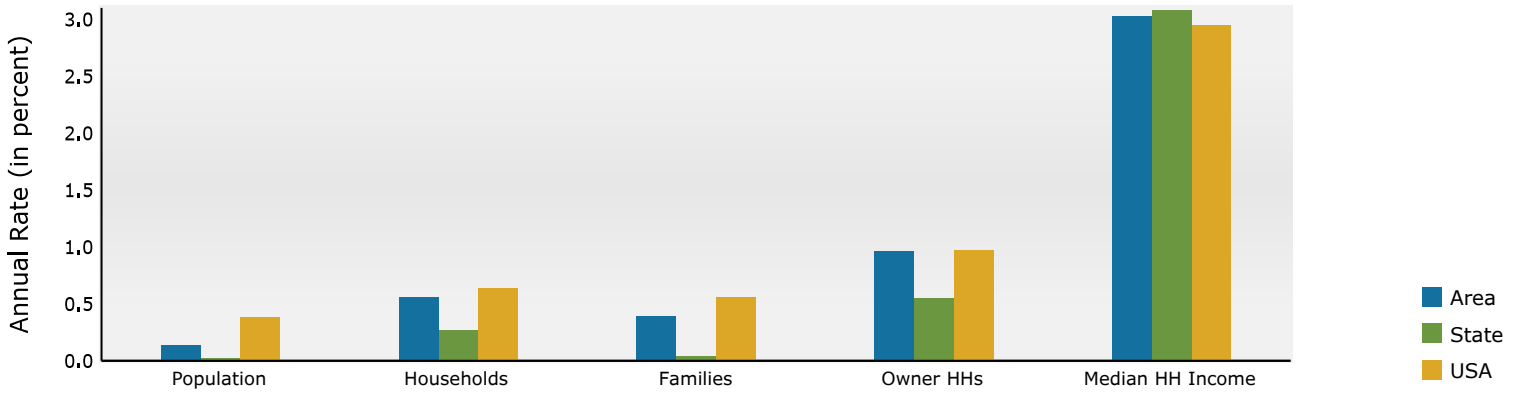
Population by Age	Census 2010		Census 2020		2024		2029	
	Number	Percent	Number	Percent	Number	Percent	Number	Percent
0 - 4	585	8.2%	442	5.8%	441	5.7%	436	5.5%
5 - 9	533	7.4%	503	6.6%	485	6.2%	437	5.6%
10 - 14	500	7.0%	514	6.7%	503	6.4%	476	6.1%
15 - 19	465	6.5%	498	6.5%	478	6.1%	462	5.9%
20 - 24	372	5.2%	450	5.9%	472	6.0%	446	5.7%
25 - 34	985	13.7%	948	12.4%	969	12.4%	1,015	12.9%
35 - 44	1,090	15.2%	1,028	13.4%	1,047	13.4%	1,017	12.9%
45 - 54	1,089	15.2%	988	12.9%	978	12.5%	998	12.7%
55 - 64	799	11.1%	1,051	13.7%	993	12.7%	936	11.9%
65 - 74	448	6.2%	792	10.3%	878	11.3%	914	11.6%
75 - 84	229	3.2%	352	4.6%	456	5.8%	579	7.4%
85+	74	1.0%	93	1.2%	104	1.3%	146	1.9%

Race and Ethnicity	Census 2010		Census 2020		2024		2029	
	Number	Percent	Number	Percent	Number	Percent	Number	Percent
White Alone	6,910	96.4%	6,936	90.6%	7,009	89.8%	7,001	89.0%
Black Alone	80	1.1%	149	1.9%	176	2.3%	186	2.4%
American Indian Alone	15	0.2%	19	0.2%	21	0.3%	22	0.3%
Asian Alone	57	0.8%	80	1.0%	88	1.1%	97	1.2%
Pacific Islander Alone	2	0.0%	1	0.0%	1	0.0%	1	0.0%
Some Other Race Alone	13	0.2%	73	1.0%	81	1.0%	86	1.1%
Two or More Races	90	1.3%	400	5.2%	431	5.5%	469	6.0%
Hispanic Origin (Any Race)	99	1.4%	176	2.3%	200	2.6%	218	2.8%

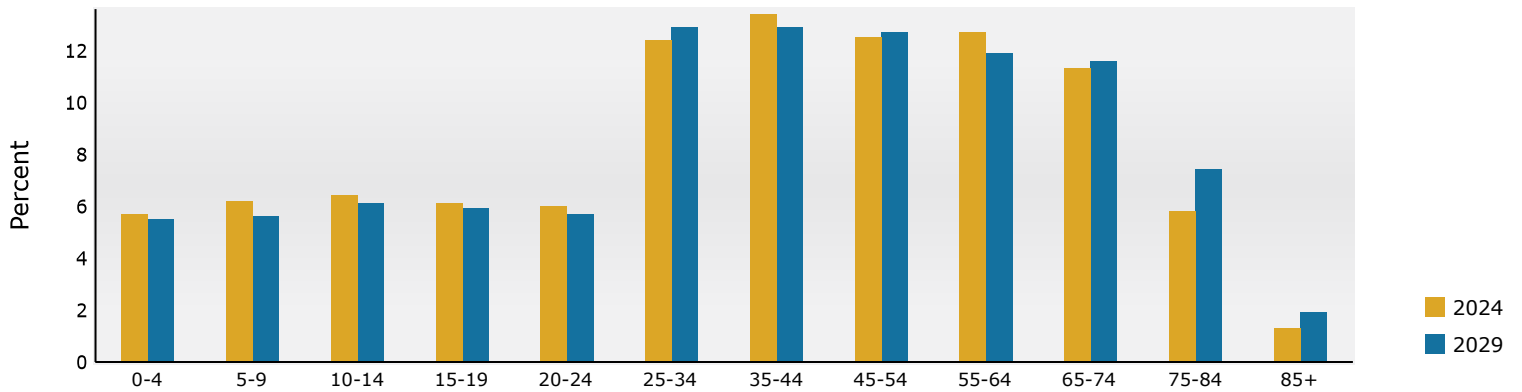
Data Note: Income is expressed in current dollars.

Source: Esri forecasts for 2024 and 2029. U.S. Census Bureau 2020 decennial Census in 2020 geographies.

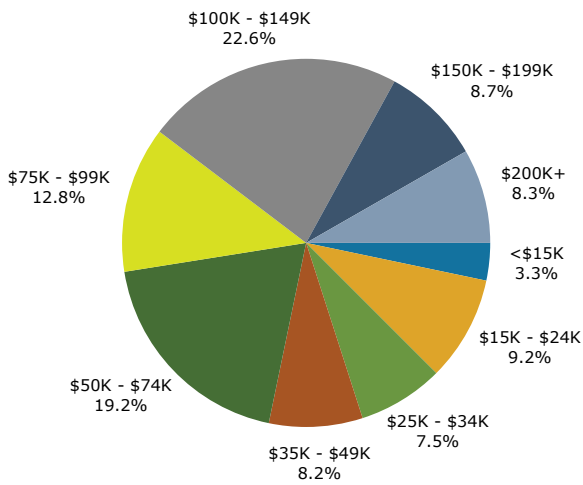
Trends 2024-2029



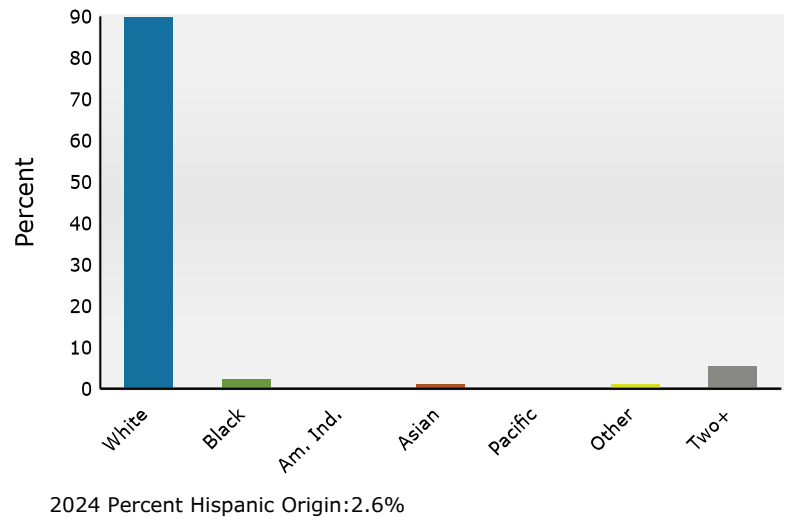
Population by Age



2024 Household Income



2024 Population by Race



Source: Esri forecasts for 2024 and 2029. U.S. Census Bureau 2020 decennial Census in 2020 geographies.

Demographic and Income Profile

**Pierce Town Center 1,3,5 mile
W Ohio Pike, Amelia, OH, 45102
Ring: 3 mile radius

Prepared by Esri
Latitude: 39.03773
Longitude: -84.23205

Summary	Census 2010	Census 2020	2024	2029
Population	28,182	31,758	33,043	33,718
Households	10,919	12,494	13,157	13,717
Families	7,751	8,689	8,907	9,198
Average Household Size	2.58	2.53	2.50	2.45
Owner Occupied Housing Units	7,935	8,854	9,527	10,163
Renter Occupied Housing Units	2,984	3,640	3,630	3,555
Median Age	36.2	39.0	39.5	40.6

Trends: 2024-2029 Annual Rate	Area	State	National
Population	0.41%	0.02%	0.38%
Households	0.84%	0.27%	0.64%
Families	0.65%	0.04%	0.56%
Owner HHs	1.30%	0.55%	0.97%
Median Household Income	2.50%	3.08%	2.95%

Households by Income	2024		2029	
	Number	Percent	Number	Percent
<\$15,000	748	5.7%	652	4.8%
\$15,000 - \$24,999	715	5.4%	539	3.9%
\$25,000 - \$34,999	788	6.0%	676	4.9%
\$35,000 - \$49,999	1,198	9.1%	1,097	8.0%
\$50,000 - \$74,999	2,347	17.8%	2,230	16.3%
\$75,000 - \$99,999	2,197	16.7%	2,155	15.7%
\$100,000 - \$149,999	2,800	21.3%	3,129	22.8%
\$150,000 - \$199,999	1,199	9.1%	1,736	12.7%
\$200,000+	1,165	8.9%	1,503	11.0%

Median Household Income	\$82,162	\$92,938
Average Household Income	\$105,655	\$122,208
Per Capita Income	\$42,163	\$49,832

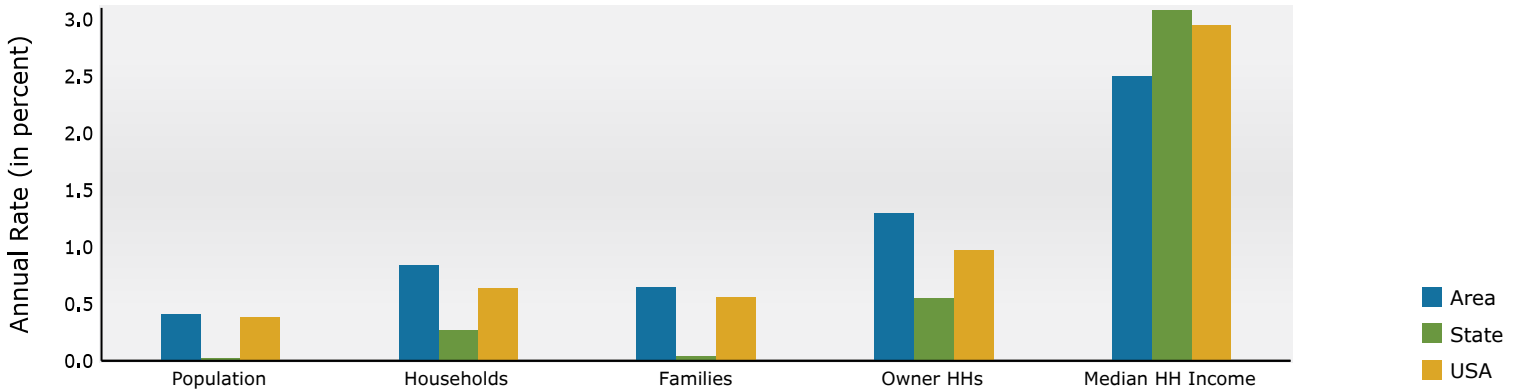
Population by Age	Census 2010		Census 2020		2024		2029	
	Number	Percent	Number	Percent	Number	Percent	Number	Percent
0 - 4	2,261	8.0%	1,962	6.2%	1,993	6.0%	2,017	6.0%
5 - 9	2,085	7.4%	2,146	6.8%	2,185	6.6%	2,020	6.0%
10 - 14	1,913	6.8%	2,101	6.6%	2,191	6.6%	2,178	6.5%
15 - 19	1,680	6.0%	1,966	6.2%	1,971	6.0%	1,992	5.9%
20 - 24	1,608	5.7%	1,797	5.7%	1,897	5.7%	1,841	5.5%
25 - 34	4,069	14.4%	4,219	13.3%	4,220	12.8%	4,206	12.5%
35 - 44	3,988	14.2%	4,089	12.9%	4,486	13.6%	4,646	13.8%
45 - 54	4,269	15.1%	3,888	12.2%	3,895	11.8%	4,077	12.1%
55 - 64	3,415	12.1%	4,335	13.7%	4,136	12.5%	3,871	11.5%
65 - 74	1,771	6.3%	3,308	10.4%	3,650	11.0%	3,826	11.3%
75 - 84	838	3.0%	1,519	4.8%	1,932	5.8%	2,425	7.2%
85+	287	1.0%	429	1.4%	485	1.5%	620	1.8%

Race and Ethnicity	Census 2010		Census 2020		2024		2029	
	Number	Percent	Number	Percent	Number	Percent	Number	Percent
White Alone	27,036	95.9%	28,731	90.5%	29,637	89.7%	29,979	88.9%
Black Alone	319	1.1%	562	1.8%	682	2.1%	737	2.2%
American Indian Alone	68	0.2%	69	0.2%	72	0.2%	75	0.2%
Asian Alone	247	0.9%	338	1.1%	375	1.1%	420	1.2%
Pacific Islander Alone	11	0.0%	5	0.0%	6	0.0%	6	0.0%
Some Other Race Alone	97	0.3%	299	0.9%	339	1.0%	368	1.1%
Two or More Races	404	1.4%	1,754	5.5%	1,932	5.8%	2,133	6.3%
Hispanic Origin (Any Race)	395	1.4%	805	2.5%	928	2.8%	1,028	3.0%

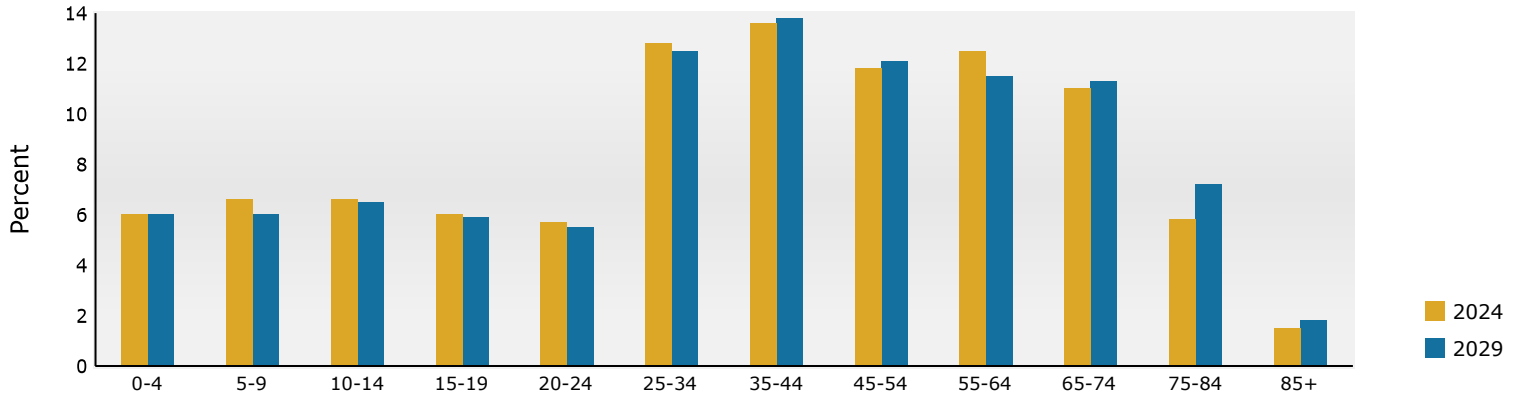
Data Note: Income is expressed in current dollars.

Source: Esri forecasts for 2024 and 2029. U.S. Census Bureau 2020 decennial Census in 2020 geographies.

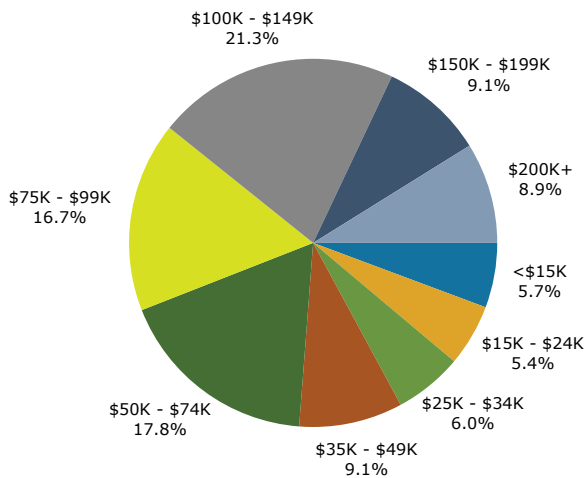
Trends 2024-2029



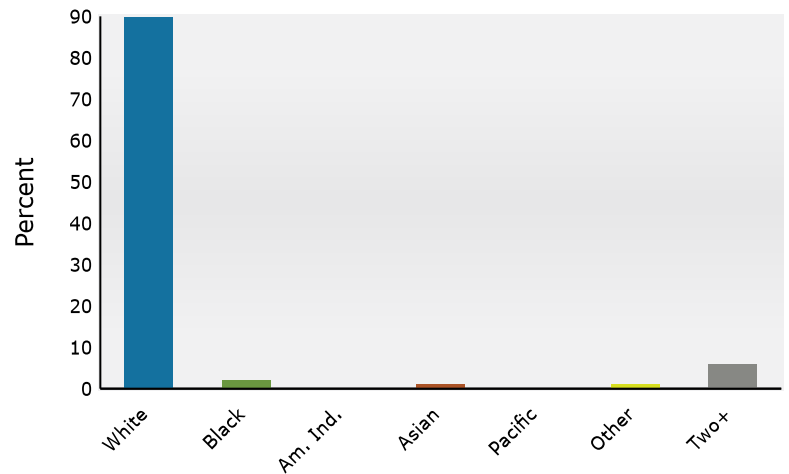
Population by Age



2024 Household Income



2024 Population by Race



2024 Percent Hispanic Origin: 2.8%

Source: Esri forecasts for 2024 and 2029. U.S. Census Bureau 2020 decennial Census in 2020 geographies.

Demographic and Income Profile

**Pierce Town Center 1,3,5 mile
W Ohio Pike, Amelia, OH, 45102
Ring: 5 mile radius

Prepared by Esri
Latitude: 39.03773
Longitude: -84.23205

Summary	Census 2010	Census 2020	2024	2029
Population	67,514	74,733	77,560	79,497
Households	26,532	30,524	32,041	33,572
Families	18,213	19,945	20,322	21,048
Average Household Size	2.53	2.43	2.40	2.35
Owner Occupied Housing Units	18,296	20,168	21,604	23,116
Renter Occupied Housing Units	8,236	10,356	10,437	10,456
Median Age	36.4	39.2	39.5	40.6

Trends: 2024-2029 Annual Rate	Area	State	National
Population	0.49%	0.02%	0.38%
Households	0.94%	0.27%	0.64%
Families	0.70%	0.04%	0.56%
Owner HHs	1.36%	0.55%	0.97%
Median Household Income	2.38%	3.08%	2.95%

Households by Income	2024		2029	
	Number	Percent	Number	Percent
<\$15,000	1,898	5.9%	1,691	5.0%
\$15,000 - \$24,999	1,706	5.3%	1,308	3.9%
\$25,000 - \$34,999	2,484	7.8%	2,105	6.3%
\$35,000 - \$49,999	2,634	8.2%	2,376	7.1%
\$50,000 - \$74,999	6,310	19.7%	6,123	18.2%
\$75,000 - \$99,999	5,038	15.7%	5,165	15.4%
\$100,000 - \$149,999	6,305	19.7%	7,144	21.3%
\$150,000 - \$199,999	3,108	9.7%	4,395	13.1%
\$200,000+	2,559	8.0%	3,265	9.7%

Median Household Income	\$78,771	\$88,623
Average Household Income	\$101,979	\$117,470
Per Capita Income	\$42,160	\$49,659

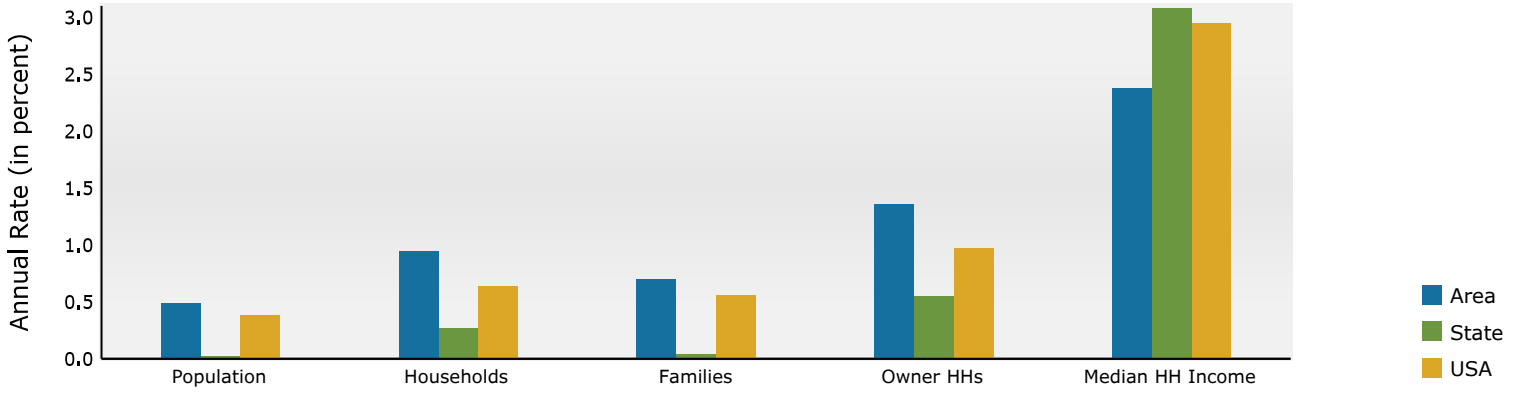
Population by Age	Census 2010		Census 2020		2024		2029	
	Number	Percent	Number	Percent	Number	Percent	Number	Percent
0 - 4	5,113	7.6%	4,449	6.0%	4,538	5.9%	4,594	5.8%
5 - 9	4,837	7.2%	4,665	6.2%	4,866	6.3%	4,559	5.7%
10 - 14	4,371	6.5%	4,727	6.3%	4,752	6.1%	4,817	6.1%
15 - 19	4,203	6.2%	4,436	5.9%	4,483	5.8%	4,404	5.5%
20 - 24	4,443	6.6%	4,565	6.1%	4,649	6.0%	4,567	5.7%
25 - 34	9,557	14.2%	10,476	14.0%	10,694	13.8%	10,686	13.4%
35 - 44	9,200	13.6%	9,275	12.4%	10,212	13.2%	10,745	13.5%
45 - 54	10,241	15.2%	8,951	12.0%	8,885	11.5%	9,314	11.7%
55 - 64	8,244	12.2%	10,363	13.9%	9,848	12.7%	9,084	11.4%
65 - 74	4,386	6.5%	7,983	10.7%	8,754	11.3%	9,293	11.7%
75 - 84	2,193	3.2%	3,730	5.0%	4,620	6.0%	5,843	7.4%
85+	729	1.1%	1,112	1.5%	1,260	1.6%	1,589	2.0%

Race and Ethnicity	Census 2010		Census 2020		2024		2029	
	Number	Percent	Number	Percent	Number	Percent	Number	Percent
White Alone	64,214	95.1%	66,607	89.1%	68,454	88.3%	69,484	87.4%
Black Alone	934	1.4%	1,666	2.2%	1,997	2.6%	2,155	2.7%
American Indian Alone	172	0.3%	177	0.2%	182	0.2%	185	0.2%
Asian Alone	831	1.2%	1,308	1.8%	1,433	1.8%	1,603	2.0%
Pacific Islander Alone	19	0.0%	26	0.0%	28	0.0%	31	0.0%
Some Other Race Alone	315	0.5%	827	1.1%	939	1.2%	1,027	1.3%
Two or More Races	1,029	1.5%	4,121	5.5%	4,527	5.8%	5,013	6.3%
Hispanic Origin (Any Race)	1,053	1.6%	2,056	2.8%	2,355	3.0%	2,610	3.3%

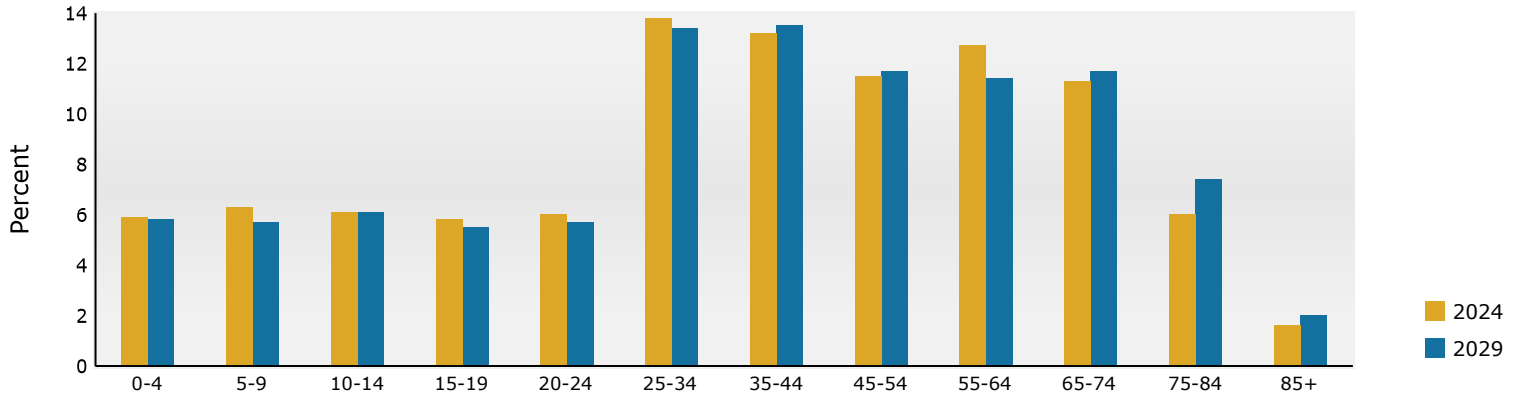
Data Note: Income is expressed in current dollars.

Source: Esri forecasts for 2024 and 2029. U.S. Census Bureau 2020 decennial Census in 2020 geographies.

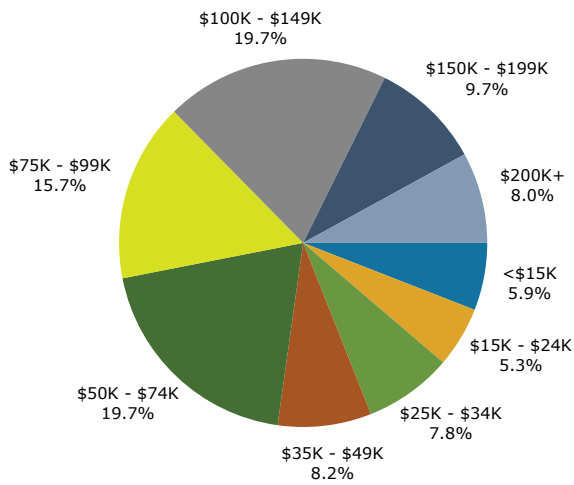
Trends 2024-2029



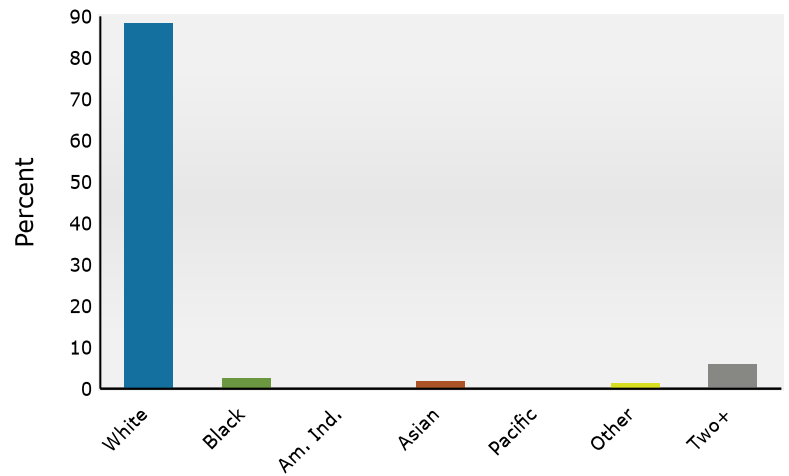
Population by Age



2024 Household Income



2024 Population by Race



2024 Percent Hispanic Origin: 3.0%

Source: Esri forecasts for 2024 and 2029. U.S. Census Bureau 2020 decennial Census in 2020 geographies.



Business Summary

**Pierce Town Center 1,3,5 mile
W Ohio Pike, Amelia, OH, 45102
Rings: 1, 3, 5 mile radii

Prepared by Esri
Latitude: 39.03773
Longitude: -84.23205

Data for all businesses in area	1 mile		3 miles		5 miles							
Total Businesses:	183		710		2,125							
Total Employees:	2,409		8,164		26,290							
Total Population:	7,806		33,043		77,560							
Employee/Population Ratio (per 100 Residents)	31		25		34							
by NAICS Codes	Businesses		Employees		Businesses		Employees		Businesses		Employees	
	Number	Percent	Number	Percent	Number	Percent	Number	Percent	Number	Percent	Number	Percent
Agriculture, Forestry, Fishing & Hunting	2	1.1%	6	0.3%	6	0.8%	16	0.2%	10	0.5%	28	0.1%
Mining	0	0.0%	0	0.0%	0	0.0%	0	0.0%	0	0.0%	0	0.0%
Utilities	0	0.0%	0	0.0%	0	0.0%	0	0.0%	1	0.1%	12	0.1%
Construction	14	7.7%	43	1.8%	75	10.6%	489	6.0%	194	9.1%	1,301	5.0%
Building Construction	4	2.2%	11	0.5%	23	3.2%	106	1.3%	64	3.0%	406	1.5%
Heavy/Civil Eng Construction	1	0.6%	2	0.1%	2	0.3%	18	0.2%	9	0.4%	184	0.7%
Specialty Trade Contractor	9	4.9%	30	1.3%	50	7.0%	364	4.5%	120	5.7%	711	2.7%
Manufacturing	4	2.2%	42	1.7%	57	8.0%	1,439	17.6%	120	5.7%	2,518	9.6%
Wholesale Trade	1	0.6%	4	0.2%	19	2.7%	188	2.3%	61	2.9%	1,811	6.9%
Durable Goods	0	0.0%	1	0.0%	14	2.0%	108	1.3%	45	2.1%	1,628	6.2%
Nondurable Goods	1	0.6%	3	0.1%	5	0.7%	53	0.7%	14	0.7%	141	0.5%
Trade Broker	0	0.0%	0	0.0%	1	0.1%	27	0.3%	2	0.1%	42	0.2%
Retail Trade	31	16.9%	221	9.2%	94	13.2%	926	11.3%	315	14.8%	4,909	18.7%
Motor Vehicle & Parts Dealers	9	4.9%	41	1.7%	20	2.8%	245	3.0%	55	2.6%	1,257	4.8%
Furniture & Home Furnishings Stores	1	0.6%	3	0.1%	6	0.8%	29	0.4%	23	1.1%	159	0.6%
Electronics & Appliance Stores	2	1.1%	12	0.5%	6	0.8%	46	0.6%	14	0.7%	103	0.4%
Building Material & Garden Equipment & Supplies Dealers	0	0.0%	0	0.0%	4	0.6%	23	0.3%	17	0.8%	532	2.0%
Food & Beverage Stores	2	1.1%	64	2.7%	11	1.6%	126	1.5%	34	1.6%	619	2.4%
Health & Personal Care Stores	4	2.2%	33	1.4%	11	1.6%	69	0.8%	37	1.7%	334	1.3%
Gasoline Stations & Fuel Dealers	4	2.2%	18	0.8%	6	0.8%	29	0.4%	18	0.8%	95	0.4%
Clothing, Clothing Accessories, Shoe and Jewelry Stores	2	1.1%	14	0.6%	7	1.0%	54	0.7%	30	1.4%	227	0.9%
Sporting Goods, Hobby, Book, & Music Stores	6	3.3%	29	1.2%	15	2.1%	60	0.7%	49	2.3%	363	1.4%
General Merchandise Stores	2	1.1%	9	0.4%	8	1.1%	246	3.0%	38	1.8%	1,221	4.6%
Transportation & Warehousing	1	0.6%	12	0.5%	8	1.1%	47	0.6%	32	1.5%	248	0.9%
Truck Transportation	1	0.6%	9	0.4%	4	0.6%	29	0.4%	12	0.6%	102	0.4%
Information	4	2.2%	23	0.9%	16	2.3%	71	0.9%	45	2.1%	303	1.1%
Finance & Insurance	12	6.6%	1,137	47.2%	32	4.5%	1,731	21.2%	100	4.7%	2,069	7.9%
Central Bank/Credit Intermediation & Related Activities	5	2.7%	33	1.4%	15	2.1%	88	1.1%	46	2.2%	292	1.1%
Securities & Commodity Contracts	1	0.6%	3	0.1%	2	0.3%	10	0.1%	13	0.6%	45	0.2%
Funds, Trusts & Other Financial Vehicles	7	3.8%	1,101	45.7%	15	2.1%	1,633	20.0%	41	1.9%	1,732	6.6%
Real Estate, Rental & Leasing	11	6.0%	31	1.3%	42	5.9%	146	1.8%	120	5.7%	553	2.1%
Professional, Scientific & Tech Services	20	10.9%	110	4.6%	69	9.7%	435	5.3%	209	9.8%	2,003	7.6%
Legal Services	5	2.7%	26	1.1%	11	1.6%	49	0.6%	54	2.5%	279	1.1%
Management of Companies & Enterprises	1	0.6%	3	0.1%	1	0.1%	4	0.1%	1	0.1%	6	0.0%
Administrative, Support & Waste Management Services	8	4.4%	34	1.4%	33	4.7%	148	1.8%	81	3.8%	455	1.7%
Educational Services	9	4.9%	312	12.9%	21	3.0%	583	7.1%	49	2.3%	1,514	5.8%

Source: Copyright 2024 Data Axle, Inc. All rights reserved. Esri Total Population forecasts for 2024.

Date Note: Data on the Business Summary report is calculated using Esri's Data allocation method which uses census block groups to allocate business summary data to custom areas.



Business Summary

**Pierce Town Center 1,3,5 mile
W Ohio Pike, Amelia, OH, 45102
Rings: 1, 3, 5 mile radii

Prepared by Esri
Latitude: 39.03773
Longitude: -84.23205

by NAICS Codes	Businesses		Employees		Businesses		Employees		Businesses		Employees	
	Number	Percent	Number	Percent	Number	Percent	Number	Percent	Number	Percent	Number	Percent
Health Care & Social Assistance	8	4.4%	37	1.5%	35	4.9%	323	4.0%	175	8.2%	2,390	9.1%
Ambulatory Health Care	6	3.3%	17	0.7%	24	3.4%	215	2.6%	132	6.2%	1,363	5.2%
Hospital	0	0.0%	0	0.0%	2	0.3%	11	0.1%	5	0.2%	207	0.8%
Nursing/Residential Care	1	0.6%	3	0.1%	3	0.4%	56	0.7%	7	0.3%	274	1.0%
Social Assistance	2	1.1%	17	0.7%	6	0.8%	40	0.5%	30	1.4%	546	2.1%
Arts, Entertainment & Recreation	3	1.6%	17	0.7%	13	1.8%	112	1.4%	35	1.6%	334	1.3%
Accommodation & Food Services	17	9.3%	213	8.8%	54	7.6%	617	7.6%	149	7.0%	2,738	10.4%
Accommodation	0	0.0%	0	0.0%	0	0.0%	0	0.0%	9	0.4%	136	0.5%
Food Services & Drinking Places	17	9.3%	213	8.8%	54	7.6%	617	7.6%	140	6.6%	2,602	9.9%
Other Services (except Public Administration)	31	16.9%	122	5.1%	99	13.9%	507	6.2%	275	12.9%	1,327	5.0%
Repair & Maintenance	8	4.4%	34	1.4%	33	4.7%	138	1.7%	89	4.2%	368	1.4%
Automotive Repair & Maintenance	5	2.7%	27	1.1%	25	3.5%	106	1.3%	67	3.1%	280	1.1%
Personal & Laundry Service	11	6.0%	53	2.2%	26	3.7%	115	1.4%	83	3.9%	433	1.6%
Civic and Other Orgs	13	7.1%	35	1.4%	39	5.5%	254	3.1%	102	4.8%	526	2.0%
Public Administration	1	0.6%	43	1.8%	13	1.8%	381	4.7%	78	3.7%	1,770	6.7%
Unclassified Establishments	6	3.3%	0	0.0%	23	3.2%	0	0.0%	75	3.5%	0	0.0%
Total	183	100.0%	2,409	100.0%	710	100.0%	8,164	100.0%	2,125	100.0%	26,290	100.0%

Source: Copyright 2024 Data Axle, Inc. All rights reserved. Esri Total Population forecasts for 2024.

Date Note: Data on the Business Summary report is calculated using Esri's Data allocation method which uses census block groups to allocate business summary data to custom areas.

Business Summary

**Pierce Town Center 1,3,5 mile
W Ohio Pike, Amelia, OH, 45102
Rings: 1, 3, 5 mile radii

Prepared by Esri
Latitude: 39.03773
Longitude: -84.23205

by SIC Codes	Businesses		Employees		Businesses		Employees		Businesses		Employees	
	Number	Percent	Number	Percent	Number	Percent	Number	Percent	Number	Percent	Number	Percent
Agriculture & Mining	7	3.8%	30	1.3%	32	4.5%	172	2.1%	68	3.2%	390	1.5%
Construction	14	7.7%	43	1.8%	72	10.1%	468	5.7%	184	8.7%	1,259	4.8%
Manufacturing	3	1.6%	35	1.4%	53	7.5%	1,409	17.3%	104	4.9%	2,435	9.3%
Transportation	3	1.6%	48	2.0%	15	2.1%	127	1.6%	45	2.1%	340	1.3%
Communication	1	0.6%	3	0.1%	7	1.0%	16	0.2%	19	0.9%	87	0.3%
Utility	0	0.0%	0	0.0%	2	0.3%	4	0.1%	5	0.2%	23	0.1%
Wholesale Trade	1	0.6%	4	0.2%	19	2.7%	196	2.4%	62	2.9%	1,827	7.0%
Retail Trade Summary	49	26.8%	440	18.3%	154	21.7%	1,577	19.3%	470	22.1%	7,592	28.9%
Home Improvement	0	0.0%	0	0.0%	4	0.6%	23	0.3%	17	0.8%	532	2.0%
General Merchandise Stores	2	1.1%	9	0.4%	8	1.1%	246	3.0%	26	1.2%	1,166	4.4%
Food Stores	4	2.2%	79	3.3%	16	2.3%	158	1.9%	45	2.1%	700	2.7%
Auto Dealers & Gas Stations	13	7.1%	58	2.4%	27	3.8%	274	3.4%	73	3.4%	1,346	5.1%
Apparel & Accessory Stores	1	0.6%	3	0.1%	6	0.8%	41	0.5%	25	1.2%	192	0.7%
Furniture & Home Furnishings	2	1.1%	15	0.6%	14	2.0%	89	1.1%	42	2.0%	294	1.1%
Eating & Drinking Places	17	9.3%	205	8.5%	53	7.5%	605	7.4%	138	6.5%	2,572	9.8%
Miscellaneous Retail	11	6.0%	72	3.0%	27	3.8%	143	1.8%	103	4.8%	790	3.0%
Finance, Insurance, Real Estate Summary	19	10.4%	1,155	48.0%	61	8.6%	1,829	22.4%	198	9.3%	2,504	9.5%
Banks, Savings & Lending Institutions	5	2.7%	33	1.4%	14	2.0%	86	1.1%	50	2.4%	314	1.2%
Securities Brokers	1	0.6%	3	0.1%	2	0.3%	10	0.1%	13	0.6%	45	0.2%
Insurance Carriers & Agents	7	3.8%	1,101	45.7%	15	2.1%	1,633	20.0%	41	1.9%	1,732	6.6%
Real Estate, Holding, Other Investment Offices	6	3.3%	18	0.8%	30	4.2%	100	1.2%	94	4.4%	413	1.6%
Services Summary	79	43.2%	598	24.8%	258	36.3%	1,966	24.1%	817	38.5%	8,046	30.6%
Hotels & Lodging	0	0.0%	0	0.0%	0	0.0%	0	0.0%	9	0.4%	136	0.5%
Automotive Services	6	3.3%	29	1.2%	29	4.1%	126	1.5%	79	3.7%	327	1.2%
Movies & Amusements	6	3.3%	20	0.8%	20	2.8%	106	1.3%	49	2.3%	359	1.4%
Health Services	6	3.3%	19	0.8%	28	3.9%	280	3.4%	144	6.8%	1,841	7.0%
Legal Services	5	2.7%	26	1.1%	11	1.6%	49	0.6%	48	2.3%	257	1.0%
Education Institutions & Libraries	7	3.8%	309	12.8%	15	2.1%	574	7.0%	41	1.9%	1,491	5.7%
Other Services	50	27.3%	196	8.1%	154	21.7%	831	10.2%	447	21.0%	3,635	13.8%
Government	2	1.1%	52	2.2%	14	2.0%	398	4.9%	79	3.7%	1,787	6.8%
Unclassified Establishments	6	3.3%	0	2.2%	23	3.2%	0	4.9%	75	3.5%	0	6.8%
Totals	183	100.0%	2,409	100.0%	710	100.0%	8,164	100.0%	2,125	100.0%	26,290	100.0%

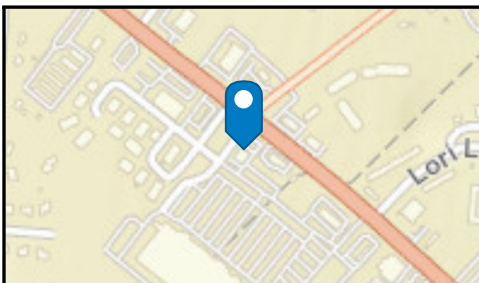
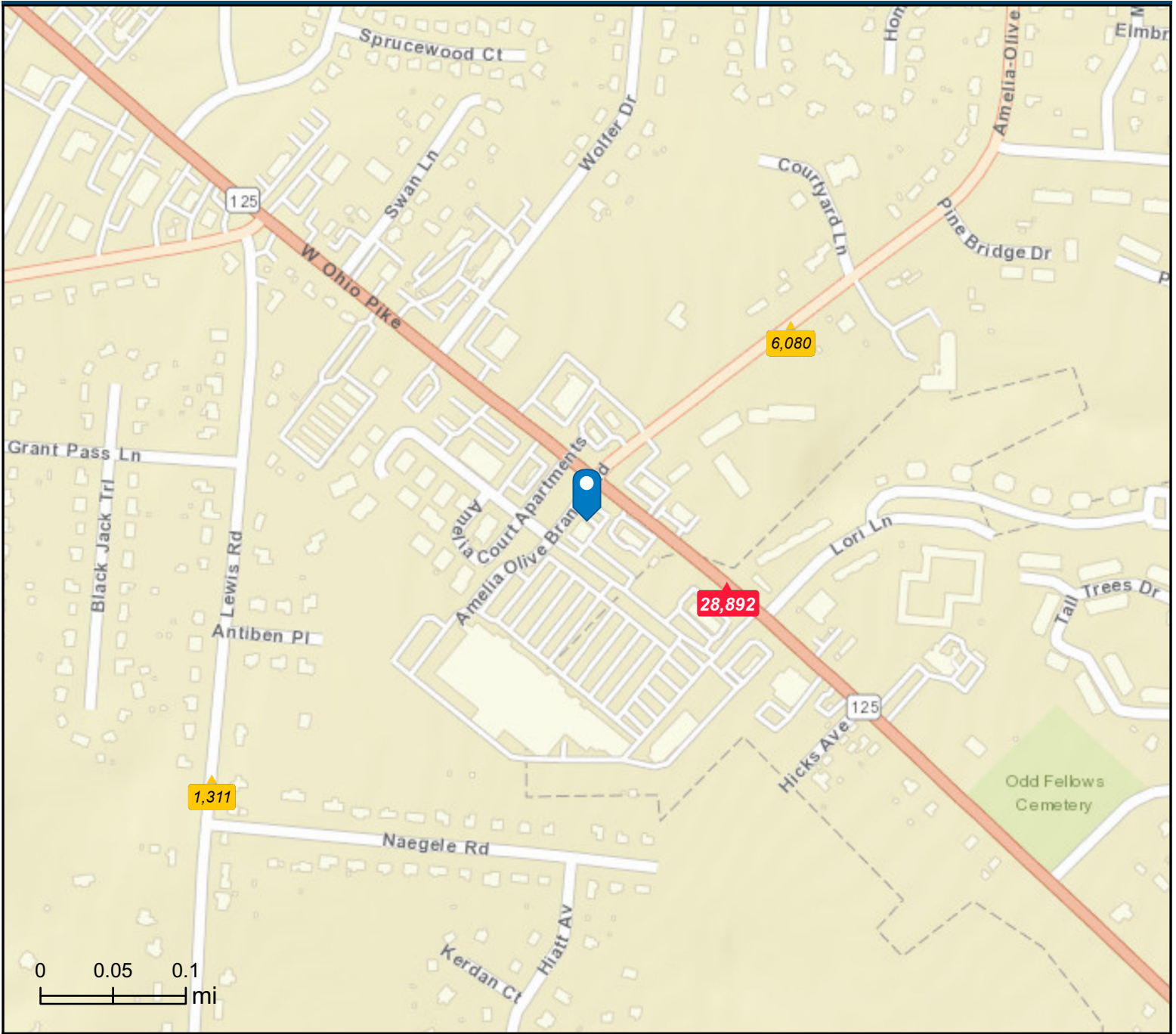
Source: Copyright 2024 Data Axle, Inc. All rights reserved. Esri Total Population forecasts for 2024.

Date Note: Data on the Business Summary report is calculated using Esri's Data allocation method which uses census block groups to allocate business summary data to custom areas.

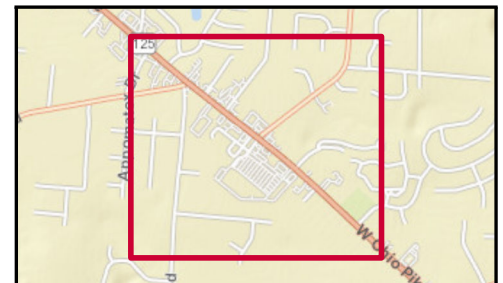
Traffic Count Map - Close Up

**Pierce Town Center 1,3,5 mile
W Ohio Pike, Amelia, OH, 45102
Rings: 1, 3, 5 mile radii

Prepared by Esri
Latitude: 39.03773
Longitude: -84.23205



- Average Daily Traffic Volume**
- ▲ Up to 6,000 vehicles per day
 - ▲ 6,001 - 15,000
 - ▲ 15,001 - 30,000
 - ▲ 30,001 - 50,000
 - ▲ 50,001 - 100,000
 - ▲ More than 100,000 per day



Source: ©2024 Kalibrate Technologies (Q3 2024).

Traffic Count Profile

**Pierce Town Center 1,3,5 mile
W Ohio Pike, Amelia, OH, 45102
Rings: 1, 3, 5 mile radii

Prepared by Esri
Latitude: 39.03773
Longitude: -84.23205

Distance:	Street:	Closest Cross-street:	Year of Count:	Count:
0.11	West Main Street	Ohio Pike (0.07 miles NW)	2021	28892
0.19	Amelia Olive Branch Rd	(0.0 miles)	2003	6080
0.31	Lewis Rd	Naegele Ln (0.03 miles S)	2004	1311
0.56	Main St	(0.0 miles)	2011	29900
0.76	Amelia Olive Branch Rd	(0.0 miles)	2011	6080
0.77	White Oak Road	(0.0 miles)	2019	3350
0.77	WHITE OAK RD	Oakwood Dr (0.03 miles SW)	2020	3022
0.85	AMELIA-OLIVE BRANCH RD	Donna Dr (0.03 miles N)	2020	12274
0.86	West Main Street	Oak St (0.06 miles NW)	2021	25182
0.90	Oak St	W Main St (0.23 miles SW)	2001	2651
0.93	Ohio Pike	Bach Buxton Rd (0.08 miles NW)	2009	33723
1.03	White Oak Rd	Whitehills Dr (0.04 miles NE)	2018	3300
1.09	Judd Rd	Amelia-Olive Branch Rd (0.15 miles E)	2000	2906
1.14	Cole Rd	McCormick Ln (0.04 miles W)	2000	1100
1.15	Breckenridge Drive	Amelia Olive Branch Rd (0.01 miles E)	2021	274
1.19	White Chapel Court	Twiggs Ln (0.01 miles)	2021	121
1.29	Ohio Pike	Will O Ee Dr (0.03 miles NW)	2021	29796
1.29	Ohio Pike	(0.0 miles)	2019	26750
1.31	Judd Rd	Perry Kelly Ln (0.06 miles W)	2005	7368
1.31	Bach Buxton Rd	Braxton Parke Dr (0.17 miles S)	2011	13522
1.32	Macpherson Place	Royal Troon Bv (0.03 miles S)	2021	148
1.32	MERWIN TENMILE RD	Legendary Run (0.07 miles N)	2020	1935
1.32	Merwin 10 Mile Rd	(0.0 miles)	2000	4000
1.33	Chapel Rd	Amelia PkDr (0.15 miles SW)	2011	2651
1.34	E Main St	Yorkshire Townhouses (0.0 miles)	2014	23254
1.34	Merwin 10 Mile Rd	(0.0 miles)	2019	2145
1.39	Cole Rd	Chery Ln (0.19 miles NE)	2000	936
1.40	Amelia Olive Branch Rd	(0.0 miles)	2012	11540
1.43	Ohio Pike	Fox TrlDr (0.04 miles SE)	2014	24688
1.50	Merwin 10 Mile Rd	(0.0 miles)	2001	7227

Data Note:The Traffic Profile displays up to 30 of the closest available traffic counts within the largest radius around your site. The years of the counts in the database range from 2024 to 2000. Esri removes counts that are older than 2000 from the Kalibrate provided database. Traffic counts are identified by the street on which they were recorded, along with the distance and direction to the closest cross-street. Distances displayed as 0.00 miles (due to rounding), are closest to the site. A traffic count is defined as the two-way Average Daily Traffic (ADT) that passes that location.

Source: ©2024 Kalibrate Technologies (Q3 2024).