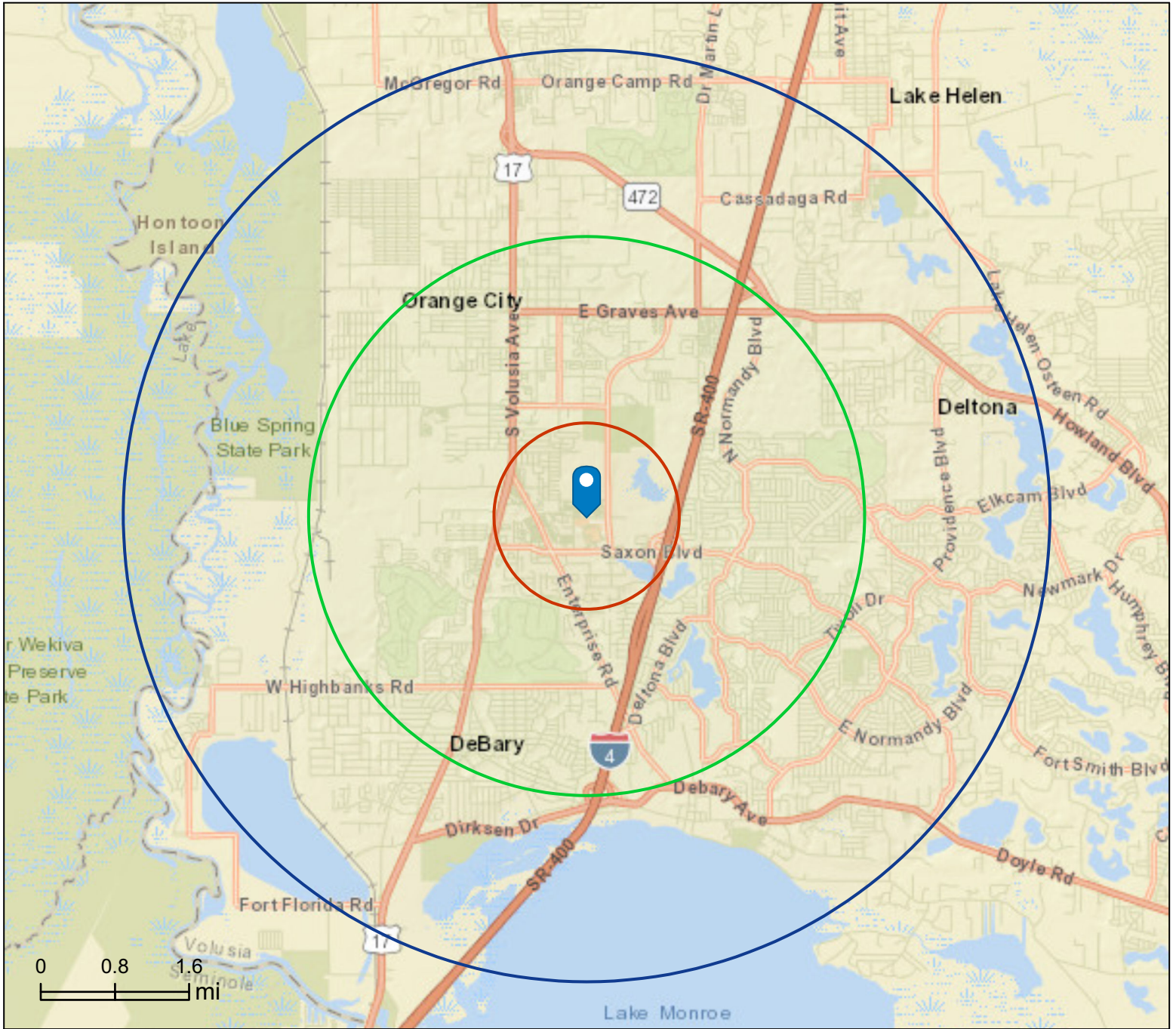


Site Details Map

West Volusia Towne Center
985 Harley Strickland Blvd, Orange City, FL, 32763
Rings: 1, 3, 5 mile radii

Prepared by Esri
Latitude: 28.91665
Longitude: -81.28565



This site is located in:

- City:** Orange City
- County:** Volusia County
- State:** Florida
- ZIP Code:** 32763
- Census Tract:** 12127090806
- Census Block Group:** 121270908062
- CBSA:** Deltona-Daytona Beach-Ormond Beach, FL Metropolitan Statistical Area

Demographic and Income Profile

West Volusia Towne Center
985 Harley Strickland Blvd, Orange City, FL, 32763
Ring: 1 mile radius

Prepared by Esri
Latitude: 28.91665
Longitude: -81.28565

Summary	Census 2010	Census 2020	2024	2029
Population	3,632	4,110	4,789	4,891
Households	1,600	1,749	2,056	2,127
Families	890	974	1,119	1,149
Average Household Size	2.25	2.31	2.29	2.27
Owner Occupied Housing Units	668	738	918	1,035
Renter Occupied Housing Units	931	1,011	1,138	1,092
Median Age	42.4	45.6	44.3	45.5

Trends: 2024-2029 Annual Rate	Area	State	National
Population	0.42%	0.93%	0.38%
Households	0.68%	1.15%	0.64%
Families	0.53%	1.12%	0.56%
Owner HHs	2.43%	1.66%	0.97%
Median Household Income	3.37%	3.25%	2.95%

Households by Income	2024		2029	
	Number	Percent	Number	Percent
<\$15,000	320	15.6%	287	13.5%
\$15,000 - \$24,999	154	7.5%	141	6.6%
\$25,000 - \$34,999	302	14.7%	283	13.3%
\$35,000 - \$49,999	300	14.6%	269	12.6%
\$50,000 - \$74,999	310	15.1%	296	13.9%
\$75,000 - \$99,999	199	9.7%	211	9.9%
\$100,000 - \$149,999	236	11.5%	316	14.9%
\$150,000 - \$199,999	101	4.9%	151	7.1%
\$200,000+	134	6.5%	172	8.1%

Median Household Income	\$46,907	\$55,370
Average Household Income	\$76,470	\$90,823
Per Capita Income	\$34,614	\$41,545

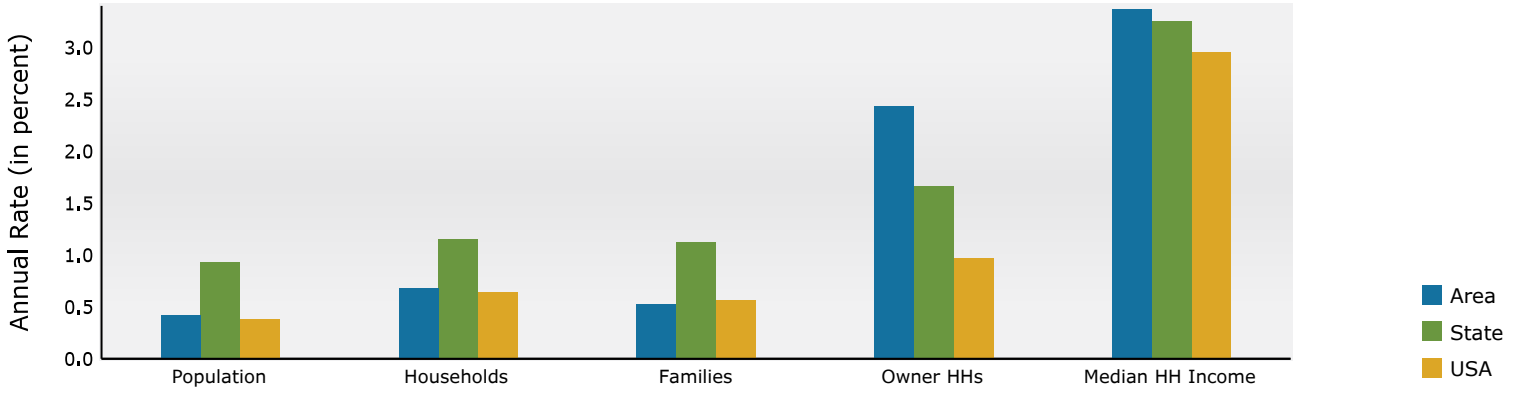
Population by Age	Census 2010		Census 2020		2024		2029	
	Number	Percent	Number	Percent	Number	Percent	Number	Percent
0 - 4	200	5.5%	223	5.4%	266	5.6%	264	5.4%
5 - 9	227	6.2%	208	5.1%	244	5.1%	230	4.7%
10 - 14	239	6.6%	252	6.1%	268	5.6%	261	5.3%
15 - 19	210	5.8%	236	5.7%	278	5.8%	263	5.4%
20 - 24	189	5.2%	234	5.7%	295	6.2%	297	6.1%
25 - 34	449	12.4%	477	11.6%	576	12.0%	592	12.1%
35 - 44	405	11.2%	397	9.7%	497	10.4%	511	10.4%
45 - 54	441	12.1%	432	10.5%	494	10.3%	494	10.1%
55 - 64	420	11.6%	527	12.8%	559	11.7%	502	10.3%
65 - 74	349	9.6%	529	12.9%	612	12.8%	651	13.3%
75 - 84	319	8.8%	379	9.2%	458	9.6%	555	11.3%
85+	185	5.1%	215	5.2%	241	5.0%	271	5.5%

Race and Ethnicity	Census 2010		Census 2020		2024		2029	
	Number	Percent	Number	Percent	Number	Percent	Number	Percent
White Alone	2,884	79.4%	2,437	59.3%	2,685	56.1%	2,602	53.2%
Black Alone	346	9.5%	468	11.4%	580	12.1%	611	12.5%
American Indian Alone	13	0.4%	30	0.7%	34	0.7%	34	0.7%
Asian Alone	85	2.3%	102	2.5%	128	2.7%	138	2.8%
Pacific Islander Alone	0	0.0%	0	0.0%	0	0.0%	0	0.0%
Some Other Race Alone	217	6.0%	398	9.7%	514	10.7%	569	11.6%
Two or More Races	86	2.4%	675	16.4%	848	17.7%	937	19.2%
Hispanic Origin (Any Race)	985	27.1%	1,279	31.1%	1,656	34.6%	1,842	37.7%

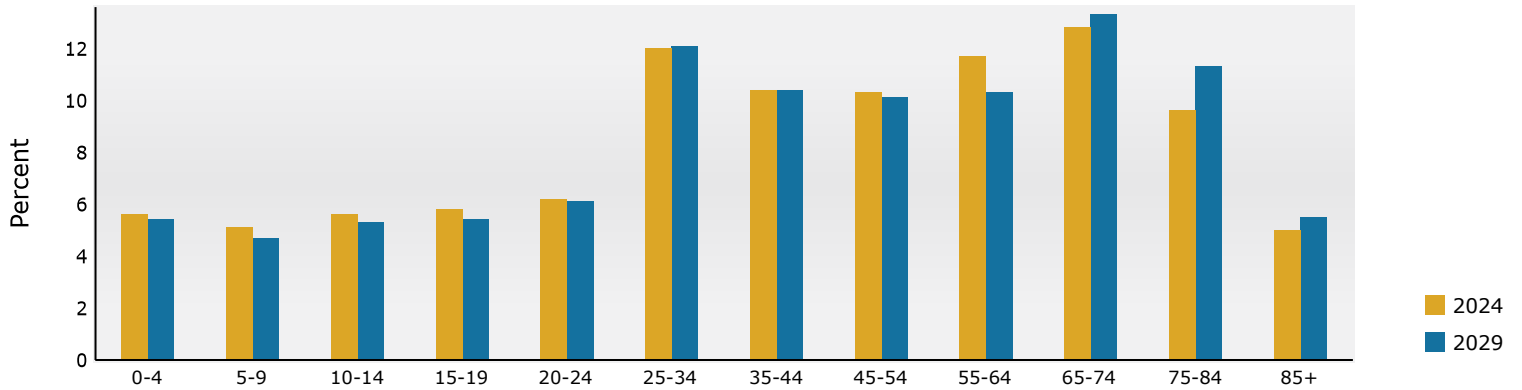
Data Note: Income is expressed in current dollars.

Source: Esri forecasts for 2024 and 2029. U.S. Census Bureau 2020 decennial Census in 2020 geographies.

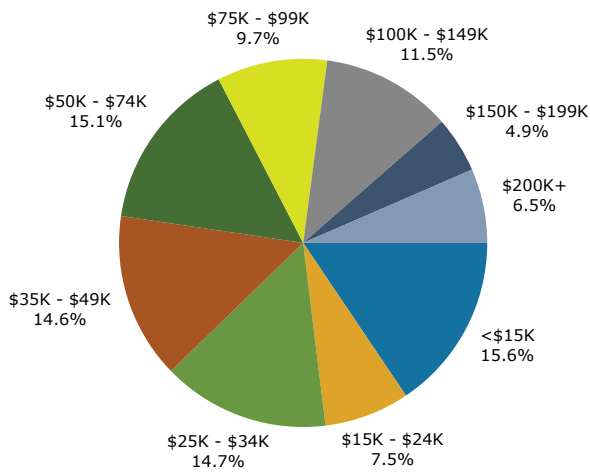
Trends 2024-2029



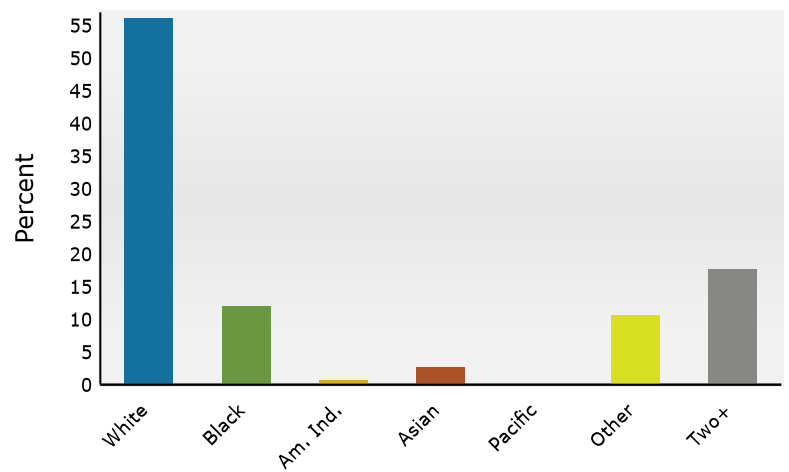
Population by Age



2024 Household Income



2024 Population by Race



2024 Percent Hispanic Origin: 34.6%

Source: Esri forecasts for 2024 and 2029. U.S. Census Bureau 2020 decennial Census in 2020 geographies.

Demographic and Income Profile

West Volusia Towne Center
985 Harley Strickland Blvd, Orange City, FL, 32763
Ring: 3 mile radius

Prepared by Esri
Latitude: 28.91665
Longitude: -81.28565

Summary	Census 2010	Census 2020	2024	2029
Population	50,312	55,808	57,922	59,002
Households	20,653	22,542	23,541	24,332
Families	13,959	15,069	15,387	15,830
Average Household Size	2.42	2.45	2.44	2.40
Owner Occupied Housing Units	15,602	16,588	17,395	18,508
Renter Occupied Housing Units	5,051	5,954	6,146	5,824
Median Age	44.1	45.8	45.9	46.8

Trends: 2024-2029 Annual Rate	Area	State	National
Population	0.37%	0.93%	0.38%
Households	0.66%	1.15%	0.64%
Families	0.57%	1.12%	0.56%
Owner HHs	1.25%	1.66%	0.97%
Median Household Income	4.19%	3.25%	2.95%

Households by Income	2024		2029	
	Number	Percent	Number	Percent
<\$15,000	1,574	6.7%	1,320	5.4%
\$15,000 - \$24,999	1,450	6.2%	1,066	4.4%
\$25,000 - \$34,999	2,621	11.1%	2,128	8.7%
\$35,000 - \$49,999	3,233	13.7%	2,821	11.6%
\$50,000 - \$74,999	3,532	15.0%	3,420	14.1%
\$75,000 - \$99,999	2,955	12.6%	3,078	12.7%
\$100,000 - \$149,999	4,840	20.6%	5,947	24.4%
\$150,000 - \$199,999	1,893	8.0%	2,737	11.2%
\$200,000+	1,442	6.1%	1,817	7.5%

Median Household Income	\$69,078	\$84,806
Average Household Income	\$91,705	\$107,824
Per Capita Income	\$37,210	\$44,391

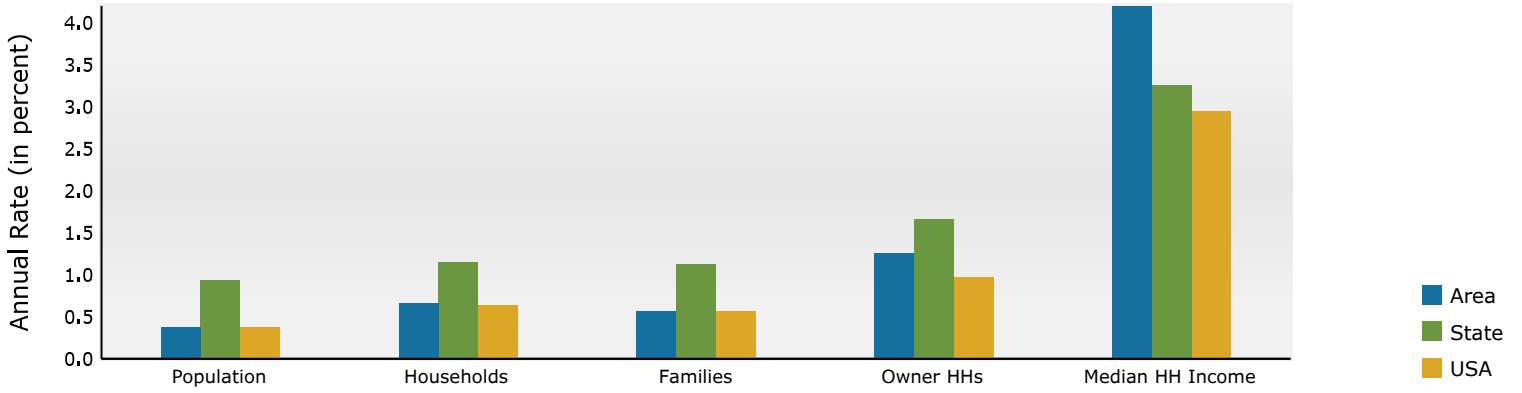
Population by Age	Census 2010		Census 2020		2024		2029	
	Number	Percent	Number	Percent	Number	Percent	Number	Percent
0 - 4	2,715	5.4%	2,631	4.7%	2,710	4.7%	2,735	4.6%
5 - 9	2,833	5.6%	2,970	5.3%	2,897	5.0%	2,694	4.6%
10 - 14	3,020	6.0%	3,316	5.9%	3,213	5.5%	3,036	5.1%
15 - 19	3,008	6.0%	3,066	5.5%	3,221	5.6%	3,046	5.2%
20 - 24	2,446	4.9%	2,738	4.9%	2,927	5.1%	2,909	4.9%
25 - 34	5,576	11.1%	6,275	11.2%	6,527	11.3%	6,589	11.2%
35 - 44	6,103	12.1%	6,348	11.4%	6,859	11.8%	7,203	12.2%
45 - 54	7,133	14.2%	7,026	12.6%	6,955	12.0%	6,912	11.7%
55 - 64	6,675	13.3%	8,124	14.6%	7,868	13.6%	7,400	12.5%
65 - 74	5,268	10.5%	7,196	12.9%	7,606	13.1%	8,067	13.7%
75 - 84	3,831	7.6%	4,229	7.6%	5,043	8.7%	5,960	10.1%
85+	1,704	3.4%	1,888	3.4%	2,096	3.6%	2,452	4.2%

Race and Ethnicity	Census 2010		Census 2020		2024		2029	
	Number	Percent	Number	Percent	Number	Percent	Number	Percent
White Alone	42,345	84.2%	36,526	65.4%	36,376	62.8%	35,557	60.3%
Black Alone	3,391	6.7%	4,459	8.0%	4,758	8.2%	4,985	8.4%
American Indian Alone	191	0.4%	261	0.5%	281	0.5%	288	0.5%
Asian Alone	776	1.5%	1,096	2.0%	1,175	2.0%	1,250	2.1%
Pacific Islander Alone	16	0.0%	24	0.0%	31	0.1%	32	0.1%
Some Other Race Alone	2,334	4.6%	5,065	9.1%	5,767	10.0%	6,345	10.8%
Two or More Races	1,259	2.5%	8,378	15.0%	9,533	16.5%	10,545	17.9%
Hispanic Origin (Any Race)	10,521	20.9%	15,320	27.5%	17,615	30.4%	19,535	33.1%

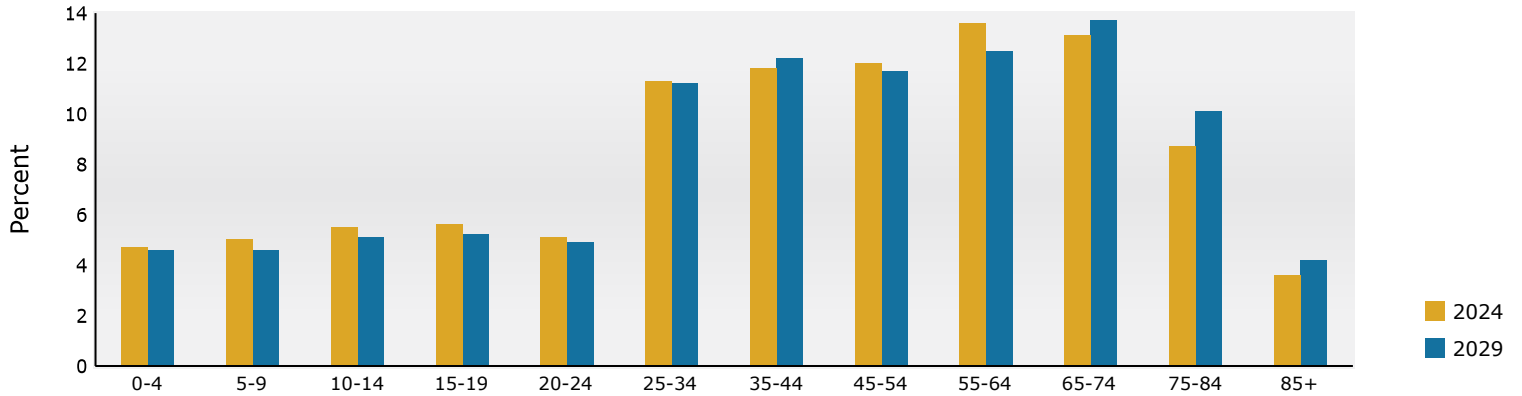
Data Note: Income is expressed in current dollars.

Source: Esri forecasts for 2024 and 2029. U.S. Census Bureau 2020 decennial Census in 2020 geographies.

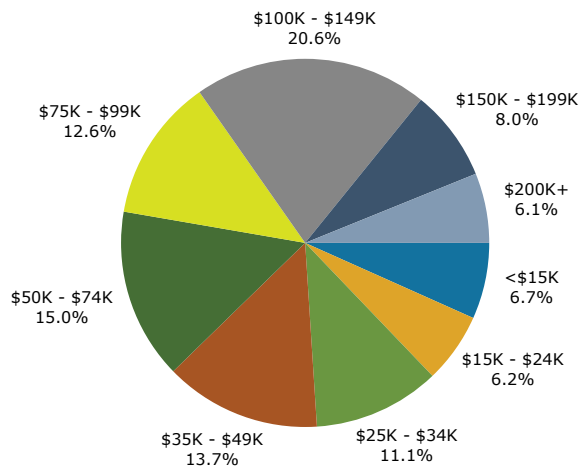
Trends 2024-2029



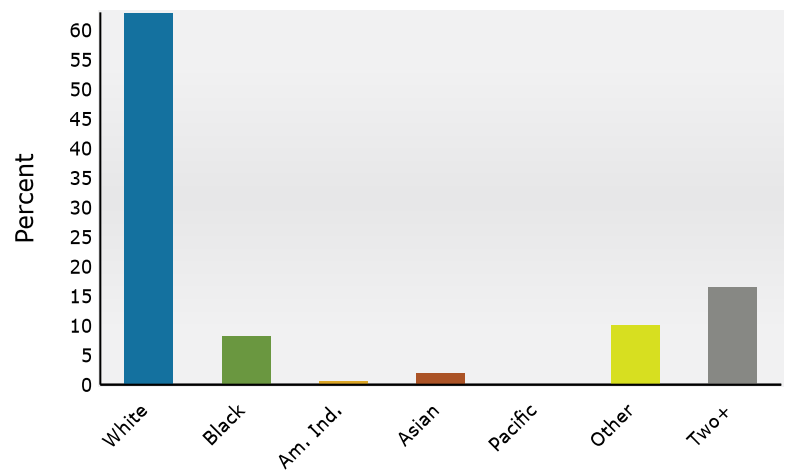
Population by Age



2024 Household Income



2024 Population by Race



2024 Percent Hispanic Origin: 30.4%

Source: Esri forecasts for 2024 and 2029. U.S. Census Bureau 2020 decennial Census in 2020 geographies.

Demographic and Income Profile

West Volusia Towne Center
985 Harley Strickland Blvd, Orange City, FL, 32763
Ring: 5 mile radius

Prepared by Esri
Latitude: 28.91665
Longitude: -81.28565

Summary	Census 2010	Census 2020	2024	2029
Population	94,470	106,542	111,876	115,075
Households	36,843	41,142	43,572	45,518
Families	25,928	28,771	29,893	31,125
Average Household Size	2.55	2.57	2.55	2.51
Owner Occupied Housing Units	28,957	31,774	33,635	36,085
Renter Occupied Housing Units	7,886	9,368	9,937	9,433
Median Age	42.1	44.2	44.4	45.3

Trends: 2024-2029 Annual Rate	Area	State	National
Population	0.57%	0.93%	0.38%
Households	0.88%	1.15%	0.64%
Families	0.81%	1.12%	0.56%
Owner HHs	1.42%	1.66%	0.97%
Median Household Income	3.86%	3.25%	2.95%

Households by Income	2024		2029	
	Number	Percent	Number	Percent
<\$15,000	2,550	5.9%	2,103	4.6%
\$15,000 - \$24,999	2,467	5.7%	1,791	3.9%
\$25,000 - \$34,999	4,348	10.0%	3,408	7.5%
\$35,000 - \$49,999	5,436	12.5%	4,665	10.2%
\$50,000 - \$74,999	6,798	15.6%	6,491	14.3%
\$75,000 - \$99,999	5,781	13.3%	6,029	13.2%
\$100,000 - \$149,999	8,961	20.6%	10,921	24.0%
\$150,000 - \$199,999	4,389	10.1%	6,438	14.1%
\$200,000+	2,842	6.5%	3,672	8.1%

Median Household Income	\$75,606	\$91,382
Average Household Income	\$96,428	\$113,983
Per Capita Income	\$37,704	\$45,274

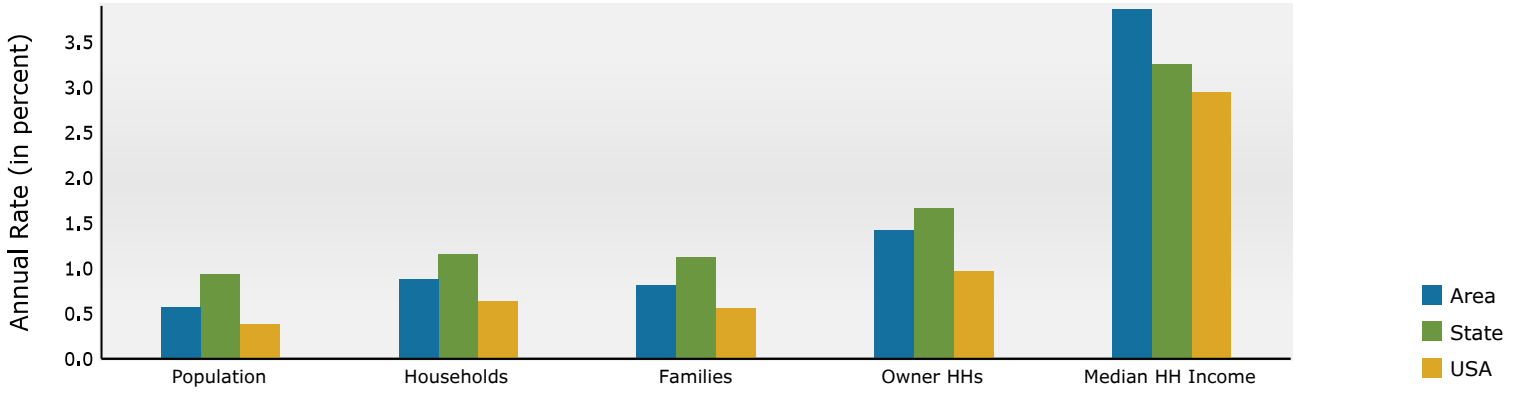
Population by Age	Census 2010		Census 2020		2024		2029	
	Number	Percent	Number	Percent	Number	Percent	Number	Percent
0 - 4	5,355	5.7%	5,192	4.9%	5,364	4.8%	5,475	4.8%
5 - 9	5,788	6.1%	5,918	5.6%	5,936	5.3%	5,569	4.8%
10 - 14	6,090	6.4%	6,503	6.1%	6,479	5.8%	6,311	5.5%
15 - 19	6,082	6.4%	6,298	5.9%	6,402	5.7%	6,135	5.3%
20 - 24	4,752	5.0%	5,438	5.1%	5,891	5.3%	5,662	4.9%
25 - 34	10,716	11.3%	12,279	11.5%	12,755	11.4%	13,252	11.5%
35 - 44	12,141	12.9%	12,686	11.9%	14,001	12.5%	14,729	12.8%
45 - 54	14,072	14.9%	13,747	12.9%	13,804	12.3%	13,999	12.2%
55 - 64	12,207	12.9%	15,528	14.6%	15,377	13.7%	14,529	12.6%
65 - 74	8,848	9.4%	12,939	12.1%	13,917	12.4%	15,062	13.1%
75 - 84	5,902	6.2%	7,116	6.7%	8,660	7.7%	10,438	9.1%
85+	2,519	2.7%	2,899	2.7%	3,291	2.9%	3,912	3.4%

Race and Ethnicity	Census 2010		Census 2020		2024		2029	
	Number	Percent	Number	Percent	Number	Percent	Number	Percent
White Alone	78,392	83.0%	68,376	64.2%	69,134	61.8%	68,337	59.4%
Black Alone	6,982	7.4%	9,105	8.5%	9,697	8.7%	10,202	8.9%
American Indian Alone	398	0.4%	488	0.5%	532	0.5%	552	0.5%
Asian Alone	1,438	1.5%	1,983	1.9%	2,177	1.9%	2,350	2.0%
Pacific Islander Alone	36	0.0%	58	0.1%	76	0.1%	83	0.1%
Some Other Race Alone	4,520	4.8%	9,896	9.3%	11,240	10.0%	12,397	10.8%
Two or More Races	2,703	2.9%	16,635	15.6%	19,020	17.0%	21,155	18.4%
Hispanic Origin (Any Race)	20,757	22.0%	30,235	28.4%	34,767	31.1%	38,678	33.6%

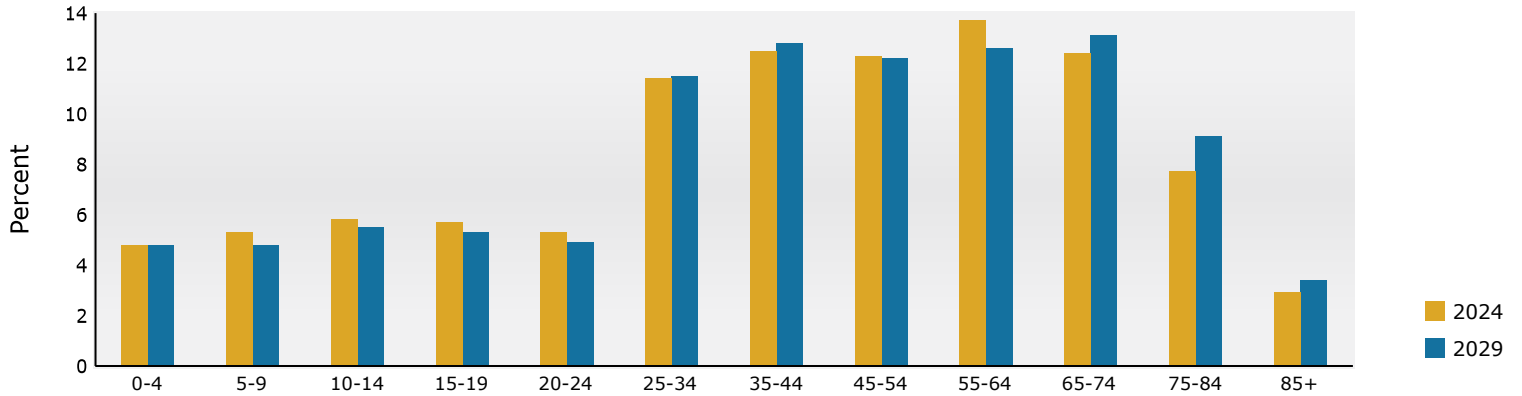
Data Note: Income is expressed in current dollars.

Source: Esri forecasts for 2024 and 2029. U.S. Census Bureau 2020 decennial Census in 2020 geographies.

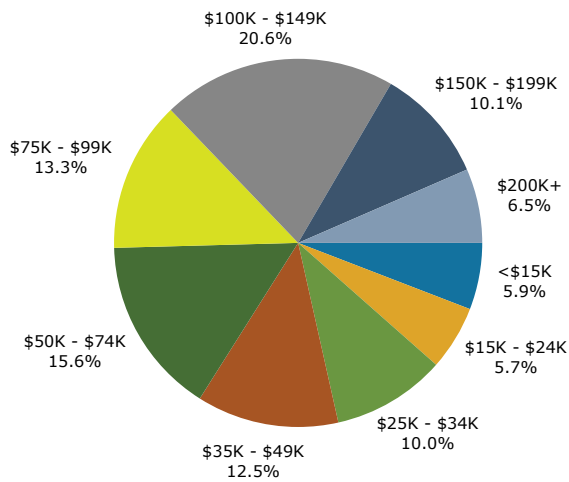
Trends 2024-2029



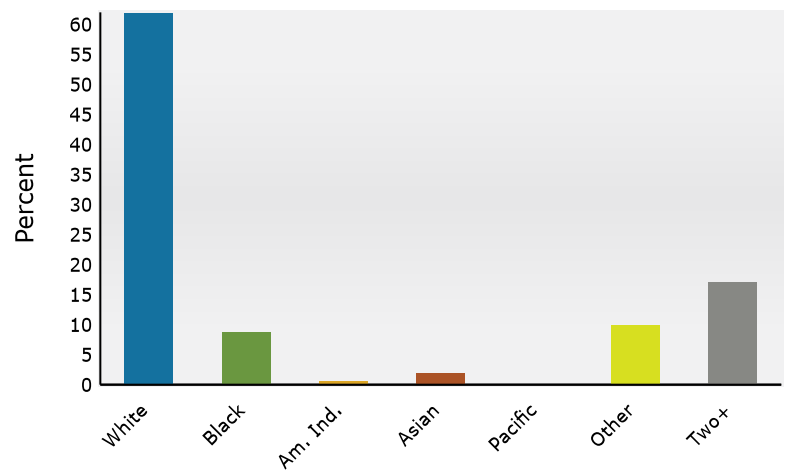
Population by Age



2024 Household Income



2024 Population by Race



2024 Percent Hispanic Origin: 31.1%

Source: Esri forecasts for 2024 and 2029. U.S. Census Bureau 2020 decennial Census in 2020 geographies.



Business Summary

West Volusia Towne Center
 985 Harley Strickland Blvd, Orange City, FL, 32763
 Rings: 1, 3, 5 mile radii

Prepared by Esri
 Latitude: 28.91665
 Longitude: -81.28565

Data for all businesses in area	1 mile		3 miles		5 miles	
Total Businesses:	563		2,023		3,227	
Total Employees:	6,859		16,667		25,821	
Total Population:	4,789		57,922		111,876	
Employee/Population Ratio (per 100 Residents)	143		29		23	

by NAICS Codes	Businesses		Employees		Businesses		Employees		Businesses		Employees	
	Number	Percent	Number	Percent	Number	Percent	Number	Percent	Number	Percent	Number	Percent
Agriculture, Forestry, Fishing & Hunting	0	0.0%	0	0.0%	2	0.1%	6	0.0%	5	0.1%	18	0.1%
Mining	0	0.0%	0	0.0%	0	0.0%	0	0.0%	0	0.0%	0	0.0%
Utilities	0	0.0%	0	0.0%	1	0.1%	21	0.1%	3	0.1%	32	0.1%
Construction	26	4.6%	176	2.6%	184	9.1%	934	5.6%	326	10.1%	1,585	6.1%
Building Construction	9	1.6%	38	0.6%	60	3.0%	188	1.1%	117	3.6%	432	1.7%
Heavy/Civil Eng Construction	1	0.2%	18	0.3%	9	0.4%	119	0.7%	13	0.4%	185	0.7%
Specialty Trade Contractor	16	2.8%	120	1.8%	115	5.7%	627	3.8%	196	6.1%	968	3.8%
Manufacturing	7	1.2%	40	0.6%	42	2.1%	282	1.7%	66	2.0%	418	1.6%
Wholesale Trade	11	1.9%	41	0.6%	45	2.2%	285	1.7%	72	2.2%	485	1.9%
Durable Goods	10	1.8%	36	0.5%	43	2.1%	273	1.6%	65	2.0%	455	1.8%
Nondurable Goods	1	0.2%	5	0.1%	3	0.1%	12	0.1%	6	0.2%	24	0.1%
Trade Broker	0	0.0%	0	0.0%	0	0.0%	0	0.0%	1	0.0%	5	0.0%
Retail Trade	79	14.0%	1,745	25.4%	266	13.2%	2,953	17.7%	425	13.2%	4,479	17.4%
Motor Vehicle & Parts Dealers	9	1.6%	57	0.8%	34	1.7%	174	1.0%	63	1.9%	733	2.8%
Furniture & Home Furnishings Stores	7	1.2%	31	0.5%	18	0.9%	69	0.4%	26	0.8%	85	0.3%
Electronics & Appliance Stores	2	0.4%	8	0.1%	9	0.4%	33	0.2%	13	0.4%	40	0.1%
Building Material & Garden Equipment & Supplies Dealers	8	1.4%	306	4.5%	27	1.3%	401	2.4%	41	1.3%	471	1.8%
Food & Beverage Stores	9	1.6%	438	6.4%	39	1.9%	748	4.5%	65	2.0%	1,206	4.7%
Health & Personal Care Stores	23	4.1%	163	2.4%	48	2.4%	309	1.9%	63	1.9%	370	1.4%
Gasoline Stations & Fuel Dealers	0	0.0%	1	0.0%	4	0.2%	16	0.1%	7	0.2%	22	0.1%
Clothing, Clothing Accessories, Shoe and Jewelry Stores	4	0.7%	26	0.4%	20	1.0%	79	0.5%	28	0.9%	101	0.4%
Sporting Goods, Hobby, Book, & Music Stores	7	1.2%	87	1.3%	33	1.6%	191	1.1%	59	1.8%	290	1.1%
General Merchandise Stores	10	1.8%	628	9.2%	33	1.6%	932	5.6%	61	1.9%	1,161	4.5%
Transportation & Warehousing	6	1.1%	25	0.4%	37	1.8%	148	0.9%	61	1.9%	220	0.8%
Truck Transportation	4	0.7%	14	0.2%	16	0.8%	55	0.3%	28	0.9%	89	0.3%
Information	13	2.3%	71	1.0%	32	1.6%	191	1.1%	61	1.9%	462	1.8%
Finance & Insurance	30	5.3%	165	2.4%	80	4.0%	377	2.3%	121	3.8%	1,215	4.7%
Central Bank/Credit Intermediation & Related Activities	22	3.9%	134	1.9%	43	2.1%	217	1.3%	58	1.8%	272	1.1%
Securities & Commodity Contracts	5	0.9%	13	0.2%	13	0.6%	33	0.2%	24	0.7%	66	0.3%
Funds, Trusts & Other Financial Vehicles	3	0.5%	18	0.3%	24	1.2%	128	0.8%	40	1.2%	877	3.4%
Real Estate, Rental & Leasing	28	5.0%	155	2.3%	110	5.4%	456	2.7%	152	4.7%	605	2.3%
Professional, Scientific & Tech Services	44	7.8%	169	2.5%	160	7.9%	585	3.5%	264	8.2%	1,261	4.9%
Legal Services	10	1.8%	26	0.4%	24	1.2%	62	0.4%	34	1.1%	91	0.3%
Management of Companies & Enterprises	4	0.7%	16	0.2%	8	0.4%	26	0.2%	10	0.3%	41	0.2%
Administrative, Support & Waste Management Services	11	1.9%	97	1.4%	78	3.9%	489	2.9%	150	4.7%	948	3.7%
Educational Services	7	1.2%	99	1.4%	36	1.8%	1,153	6.9%	65	2.0%	1,999	7.7%

Source: Copyright 2024 Data Axle, Inc. All rights reserved. Esri Total Population forecasts for 2024.

Date Note: Data on the Business Summary report is calculated using Esri's Data allocation method which uses census block groups to allocate business summary data to custom areas.



Business Summary

West Volusia Towne Center
 985 Harley Strickland Blvd, Orange City, FL, 32763
 Rings: 1, 3, 5 mile radii

Prepared by Esri
 Latitude: 28.91665
 Longitude: -81.28565

by NAICS Codes	Businesses		Employees		Businesses		Employees		Businesses		Employees	
	Number	Percent	Number	Percent	Number	Percent	Number	Percent	Number	Percent	Number	Percent
Health Care & Social Assistance	153	27.2%	2,703	39.4%	321	15.9%	4,526	27.2%	409	12.7%	5,448	21.1%
Ambulatory Health Care	125	22.2%	1,195	17.4%	241	11.9%	2,094	12.6%	298	9.2%	2,604	10.1%
Hospital	10	1.8%	1,113	16.2%	15	0.7%	1,226	7.4%	20	0.6%	1,251	4.8%
Nursing/Residential Care	8	1.4%	333	4.8%	25	1.2%	917	5.5%	32	1.0%	1,059	4.1%
Social Assistance	11	1.9%	62	0.9%	39	1.9%	289	1.7%	59	1.8%	533	2.1%
Arts, Entertainment & Recreation	9	1.6%	102	1.5%	38	1.9%	369	2.2%	58	1.8%	475	1.8%
Accommodation & Food Services	50	8.9%	932	13.6%	139	6.9%	1,957	11.7%	208	6.5%	2,751	10.7%
Accommodation	3	0.5%	38	0.6%	12	0.6%	171	1.0%	20	0.6%	226	0.9%
Food Services & Drinking Places	47	8.3%	894	13.0%	127	6.3%	1,786	10.7%	188	5.8%	2,525	9.8%
Other Services (except Public Administration)	57	10.1%	243	3.5%	285	14.1%	1,345	8.1%	467	14.5%	2,105	8.2%
Repair & Maintenance	10	1.8%	39	0.6%	70	3.5%	201	1.2%	112	3.5%	333	1.3%
Automotive Repair & Maintenance	9	1.6%	37	0.5%	47	2.3%	148	0.9%	74	2.3%	241	0.9%
Personal & Laundry Service	34	6.0%	165	2.4%	126	6.2%	454	2.7%	191	5.9%	677	2.6%
Civic and Other Orgs	13	2.3%	39	0.6%	90	4.5%	690	4.1%	164	5.1%	1,094	4.2%
Public Administration	4	0.7%	77	1.1%	26	1.3%	551	3.3%	51	1.6%	1,260	4.9%
Unclassified Establishments	25	4.4%	3	0.0%	133	6.6%	10	0.1%	254	7.9%	17	0.1%
Total	563	100.0%	6,859	100.0%	2,023	100.0%	16,667	100.0%	3,227	100.0%	25,821	100.0%

Source: Copyright 2024 Data Axle, Inc. All rights reserved. Esri Total Population forecasts for 2024.

Date Note: Data on the Business Summary report is calculated using Esri's Data allocation method which uses census block groups to allocate business summary data to custom areas.

Business Summary

West Volusia Towne Center
985 Harley Strickland Blvd, Orange City, FL, 32763
Rings: 1, 3, 5 mile radii

Prepared by Esri
Latitude: 28.91665
Longitude: -81.28565

by SIC Codes	Businesses		Employees		Businesses		Employees		Businesses		Employees	
	Number	Percent	Number	Percent	Number	Percent	Number	Percent	Number	Percent	Number	Percent
Agriculture & Mining	6	1.1%	21	0.3%	52	2.6%	206	1.2%	96	3.0%	596	2.3%
Construction	24	4.3%	172	2.5%	170	8.4%	858	5.2%	305	9.4%	1,442	5.6%
Manufacturing	7	1.2%	33	0.5%	30	1.5%	245	1.5%	51	1.6%	365	1.4%
Transportation	7	1.2%	30	0.4%	49	2.4%	199	1.2%	85	2.6%	356	1.4%
Communication	8	1.4%	36	0.5%	19	0.9%	94	0.6%	35	1.1%	242	0.9%
Utility	0	0.0%	43	0.6%	3	0.1%	234	1.4%	7	0.2%	312	1.2%
Wholesale Trade	11	1.9%	41	0.6%	46	2.3%	288	1.7%	73	2.3%	489	1.9%
Retail Trade Summary	130	23.1%	2,654	38.7%	408	20.2%	4,787	28.7%	633	19.6%	7,071	27.4%
Home Improvement	8	1.4%	306	4.5%	28	1.4%	403	2.4%	42	1.3%	473	1.8%
General Merchandise Stores	7	1.2%	606	8.8%	22	1.1%	876	5.3%	44	1.4%	1,055	4.1%
Food Stores	12	2.1%	460	6.7%	42	2.1%	784	4.7%	66	2.0%	1,274	4.9%
Auto Dealers & Gas Stations	9	1.6%	58	0.8%	39	1.9%	190	1.1%	68	2.1%	753	2.9%
Apparel & Accessory Stores	3	0.5%	17	0.3%	15	0.7%	61	0.4%	22	0.7%	79	0.3%
Furniture & Home Furnishings	9	1.6%	39	0.6%	32	1.6%	110	0.7%	46	1.4%	147	0.6%
Eating & Drinking Places	46	8.2%	879	12.8%	123	6.1%	1,744	10.5%	181	5.6%	2,439	9.4%
Miscellaneous Retail	36	6.4%	288	4.2%	108	5.3%	619	3.7%	165	5.1%	851	3.3%
Finance, Insurance, Real Estate Summary	59	10.5%	328	4.8%	177	8.8%	811	4.9%	253	7.8%	1,774	6.9%
Banks, Savings & Lending Institutions	21	3.7%	132	1.9%	38	1.9%	205	1.2%	54	1.7%	262	1.0%
Securities Brokers	5	0.9%	13	0.2%	13	0.6%	33	0.2%	24	0.7%	66	0.3%
Insurance Carriers & Agents	3	0.5%	18	0.3%	24	1.2%	128	0.8%	40	1.2%	877	3.4%
Real Estate, Holding, Other Investment Offices	30	5.3%	165	2.4%	102	5.0%	445	2.7%	136	4.2%	569	2.2%
Services Summary	282	50.1%	3,423	49.9%	910	45.0%	8,384	50.3%	1,383	42.9%	11,896	46.1%
Hotels & Lodging	3	0.5%	38	0.6%	12	0.6%	171	1.0%	20	0.6%	226	0.9%
Automotive Services	10	1.8%	41	0.6%	61	3.0%	194	1.2%	95	2.9%	305	1.2%
Movies & Amusements	11	1.9%	108	1.6%	47	2.3%	402	2.4%	73	2.3%	554	2.1%
Health Services	141	25.0%	2,632	38.4%	275	13.6%	4,188	25.1%	341	10.6%	4,857	18.8%
Legal Services	8	1.4%	21	0.3%	20	1.0%	51	0.3%	29	0.9%	76	0.3%
Education Institutions & Libraries	4	0.7%	93	1.4%	27	1.3%	1,136	6.8%	50	1.6%	2,014	7.8%
Other Services	104	18.5%	490	7.1%	469	23.2%	2,242	13.4%	776	24.1%	3,865	15.0%
Government	4	0.7%	77	1.1%	27	1.3%	552	3.3%	52	1.6%	1,262	4.9%
Unclassified Establishments	25	4.4%	3	1.1%	133	6.6%	10	3.3%	254	7.9%	17	4.9%
Totals	563	100.0%	6,859	100.0%	2,023	100.0%	16,667	100.0%	3,227	100.0%	25,821	100.0%

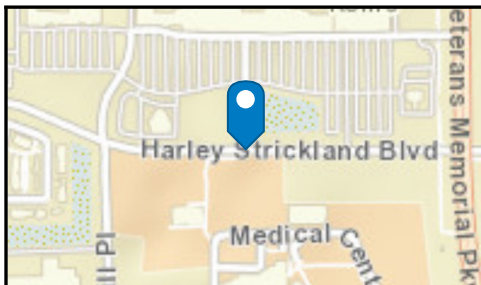
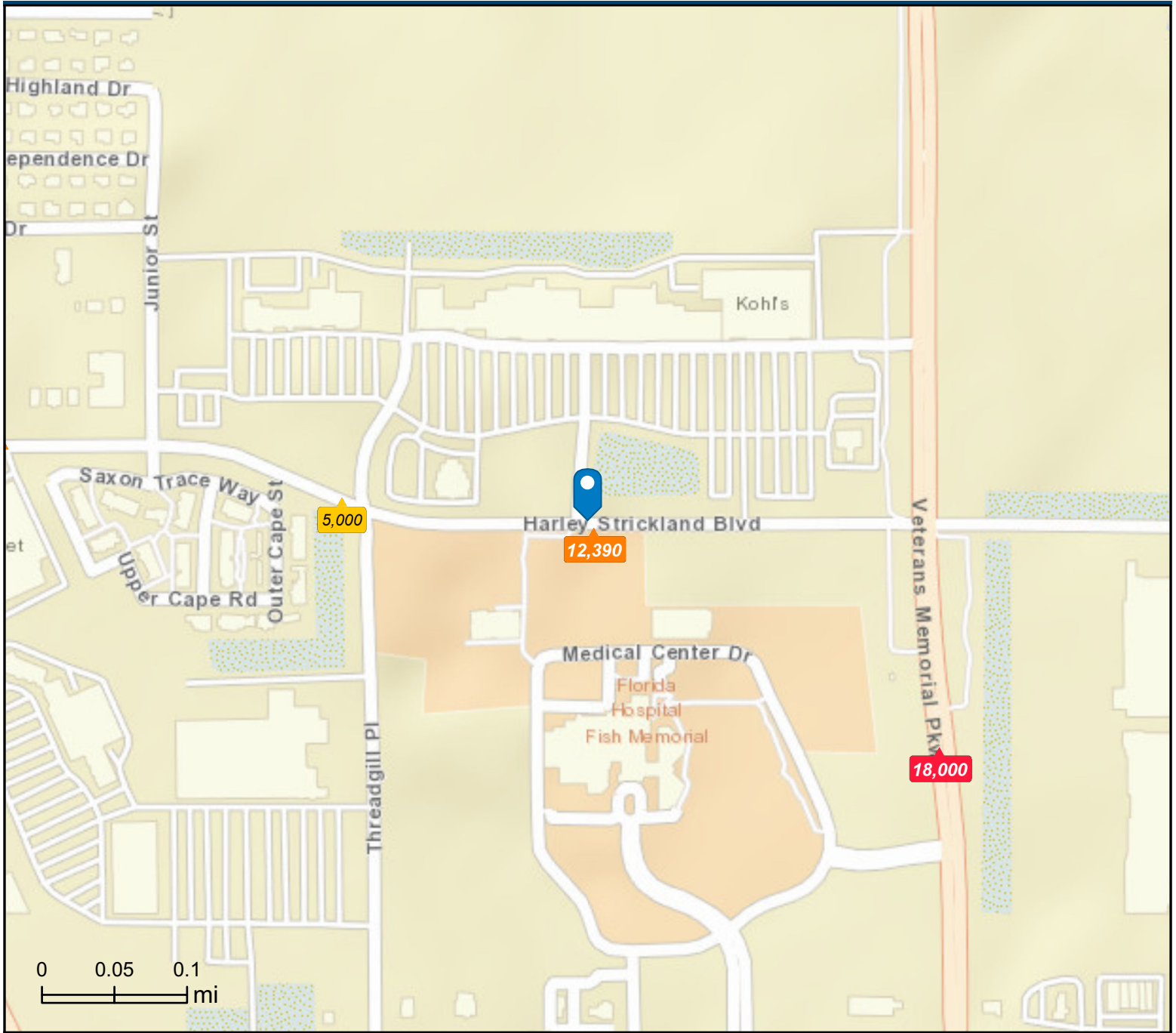
Source: Copyright 2024 Data Axle, Inc. All rights reserved. Esri Total Population forecasts for 2024.

Date Note: Data on the Business Summary report is calculated using Esri's Data allocation method which uses census block groups to allocate business summary data to custom areas.

Traffic Count Map - Close Up

West Volusia Towne Center
985 Harley Strickland Blvd, Orange City, FL, 32763
Rings: 1, 3, 5 mile radii

Prepared by Esri
Latitude: 28.91665
Longitude: -81.28565



- Average Daily Traffic Volume**
- ▲ Up to 6,000 vehicles per day
 - ▲ 6,001 - 15,000
 - ▲ 15,001 - 30,000
 - ▲ 30,001 - 50,000
 - ▲ 50,001 - 100,000
 - ▲ More than 100,000 per day



Source: ©2024 Kalibrate Technologies (Q3 2024).



Traffic Count Profile

West Volusia Towne Center
 985 Harley Strickland Blvd, Orange City, FL, 32763
 Rings: 1, 3, 5 mile radii

Prepared by Esri
 Latitude: 28.91665
 Longitude: -81.28565

Distance:	Street:	Closest Cross-street:	Year of Count:	Count:
0.01	Harley Strickland Blvd	Treadgill Pl (0.16 miles W)	2011	12390
0.17	Harley Strickland Boulevard	Treadgill Pl (0.02 miles SE)	2022	5000
0.29	Veterans Memorial Pkwy	Medical Center Dr (0.07 miles S)	2012	18000
0.38	Saxon Boulevard	Medical Center Dr (0.02 miles W)	2022	32000
0.38	Saxon Boulevard	Call Ave (0.09 miles E)	2021	32000
0.40	Harley Strickland Blvd	JrSt (0.1 miles E)	2011	12390
0.47	Saxon Blvd	Bloxham Ave (0.04 miles E)	2008	29500
0.50	Enterprise Rd	Saxon Blvd (0.17 miles SE)	2012	24500
0.56	Enterprise Road	Harley Stricklan (0.01 miles SE)	2022	25000
0.60	Saxon Blvd	Veterans Memorial Pkwy (0.2 miles W)	2011	40060
0.64	Saxon Blvd	Enterprise Rd (0.14 miles E)	2011	14450
0.68	Saxon Blvd	I- 4 (0.26 miles E)	2012	23500
0.75	Enterprise Rd	Grand Plz Dr (0.06 miles NW)	2011	22090
0.76	Enterprise Rd	Town Center Dr (0.02 miles N)	2011	23460
0.77	Saxon Boulevard	Woodford Dr (0.05 miles W)	2022	33000
0.78		Saxon Blvd (0.0 miles)	2022	4500
0.78		Saxon Blvd (0.0 miles)	2022	7000
0.81	Saxon Blvd	I- 4 (0.11 miles E)	2011	42380
0.85	Enterprise Rd	Grand Plz Dr (0.06 miles SE)	2007	21260
0.85		Saxon Blvd (0.0 miles)	2022	2900
0.85		Saxon Blvd (0.0 miles)	2022	5800
0.90		Saxon Blvd (0.02 miles SE)	2022	6800
0.93	S Volusia Ave	Miller Rd (0.1 miles N)	2012	17500
0.93	Volusia Avenue	Shady Ln (0.01 miles S)	2022	26000
0.96	S Volusia Ave	Shady Ln (0.07 miles NE)	2011	27500
0.96	Saxon Blvd	Alessandra Cir (0.03 miles E)	2012	13600
0.97		I- 4 (0.06 miles NW)	2022	6900
0.99		(0.0 miles)	2012	6100
1.00	Saxon Boulevard	I- 4 (0.07 miles W)	2022	16800
1.00	S Volusia Ave	TerHill Blvd (0.02 miles NE)	2008	19500

Data Note:The Traffic Profile displays up to 30 of the closest available traffic counts within the largest radius around your site. The years of the counts in the database range from 2024 to 2000. Esri removes counts that are older than 2000 from the Kalibrate provided database. Traffic counts are identified by the street on which they were recorded, along with the distance and direction to the closest cross-street. Distances displayed as 0.00 miles (due to rounding), are closest to the site. A traffic count is defined as the two-way Average Daily Traffic (ADT) that passes that location.

Source: ©2024 Kalibrate Technologies (Q3 2024).